

**My Book of**

# **SIMPLE SUBTRACTION**



*If your child is starting to learn subtraction,  
then this book will build on that foundation.*

Use this book to help your child learn to subtract  
the numbers 1 through 5 from whole numbers up to 20.

## My Book of

# SIMPLE SUBTRACTION



### The aims and purpose of this book

▲ If your child can write and add numbers, this book of subtraction will expose him or her to the broader world of numbers. The ability to subtract numbers from other whole numbers cannot be acquired through mere repetition. In this workbook, children begin the learning experience by repeatedly tracing and reciting numbers both forwards and backwards. Then they gradually shift from subtracting 1 from whole numbers to subtracting 5. By breaking this difficult skill into manageable units, this workbook helps children easily learn concepts without stress.

▲ Mastering basic subtraction is vital to understanding the decimal system, which is the foundation of higher-level arithmetic concepts and skills taught at school such as multiplication, division, and fractions. Understanding the concept that numbers can be added or taken away prepares children ideally for the more advanced world of positive and negative numbers.

▲ It is important for children to truly understand how to combine and break down numbers in order to help them master addition and subtraction. Children are willing to learn what is easily understood by them, and once they learn something new, they always want to know more. Kumon Workbooks' incremental method will encourage children to gain solid academic skills while showing them the pleasure of learning.

### How to use this book

▲ This workbook has no answer section. Please check your child's answers when he or she is done with each page. Some pages contain a number chart to give children a hint that the answers are included in the chart.

▲ Offer praise at the end of each page, and write encouraging words or place stickers on completed pages as a special prize.

▲ Please refer to the "To parents" notes in this book, which provide more comments and advice on how to help your child progress through this book.

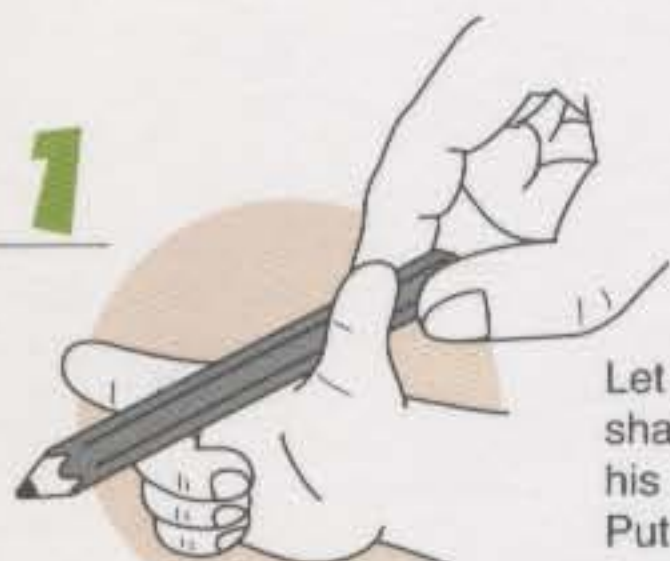
▲ It is a good idea to set the number of pages your child will complete in a day. It may be one sheet (two pages) or two sheets (four pages) a day. The essential point to remember is that the practice should come to an end when your child still wants to do a little more.

▲ Most workbooks contain the same paper stock, but each Kumon Workbook features a different type of paper, tailored to a specific activity and use. This book features a good quality paper geared to children who are learning to write. The paper can stand up to rough drawing, even from children who are still refining their pencil-control skills. It is also made for easy erasing, which gives your child the opportunity to draw the lines again and again on each page.

### How to hold a pencil properly

There are several ways to teach children to hold a pencil properly. Here is one example.

1



Let your child form the shape pictured here, using his or her own fingers. Put the pencil between the bending middle finger and joint part of thumb and forefinger.

2



Have your child grip the pencil with thumb and forefinger.

3



Check the way that your child is holding the pencil against the picture to decide whether or not it is the proper way.

It can be difficult for a child who does not yet have enough strength in his or her hand and fingers to hold the pencil properly. Please teach this skill gradually, so that your child will remain interested and willing to hold a pencil naturally.



# Saying and Writing Numbers

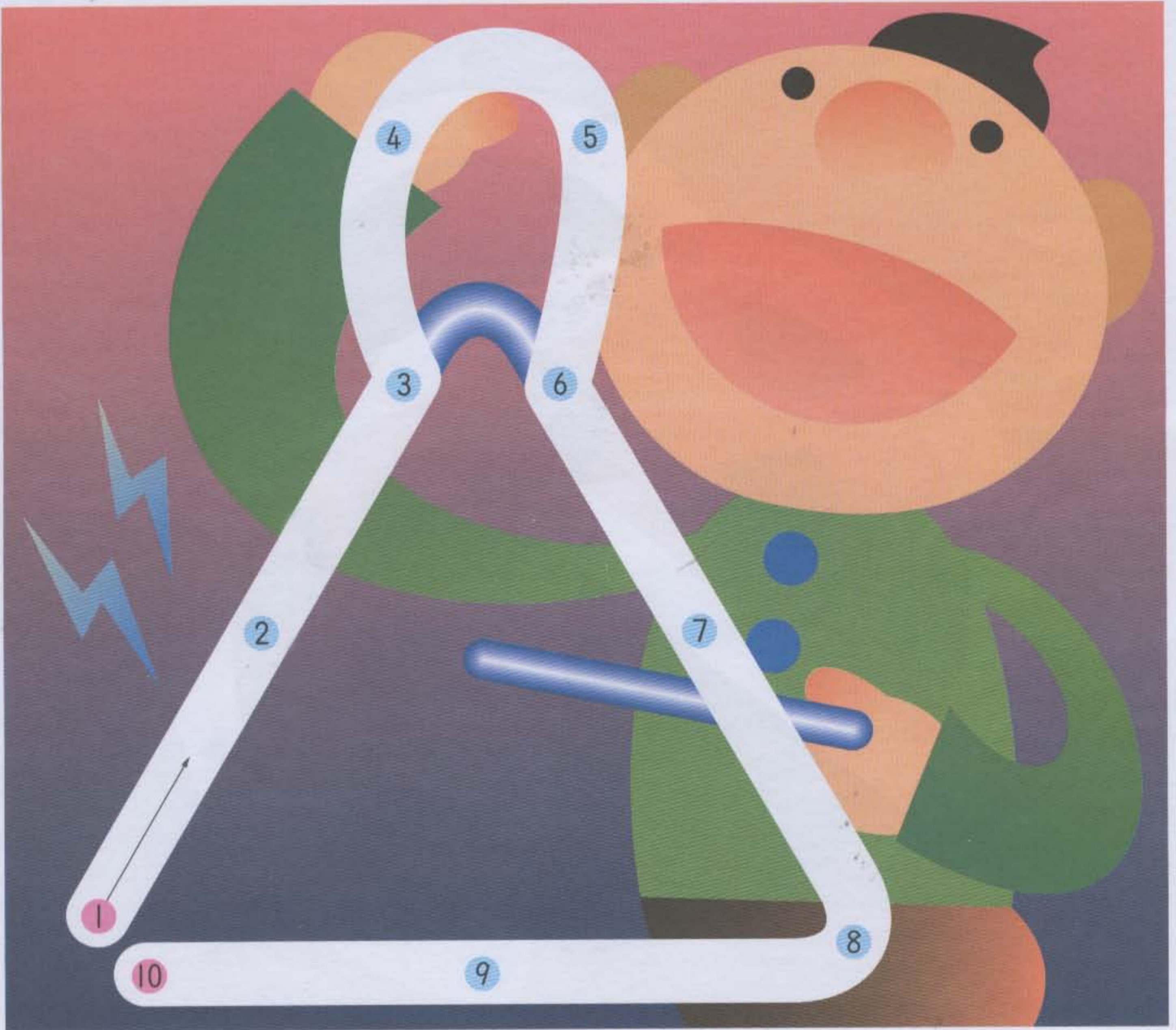
1 to 10

Name
Date

### To parents

Starting with this page, your child will learn to write and recite numbers. Being able to successfully recite and write numbers in order is indispensable for an understanding of subtraction. When your child completes each exercise, please offer lots of praise.

- Draw a line from 1 to 10 in order while saying each number.



- Say each number aloud as you trace it.

1	2	3	4	5	6	7	8	9	10
---	---	---	---	---	---	---	---	---	----

10 to 1

- Draw a line from 10 back to 1 while saying each number.



- Say each number aloud as you trace it.

10	9	8	7	6	5	4	3	2	1
----	---	---	---	---	---	---	---	---	---

## 2

## Saying and Writing Numbers

1 to 11

Name

Date

- Draw a line from 1 to 11 in order while saying each number.

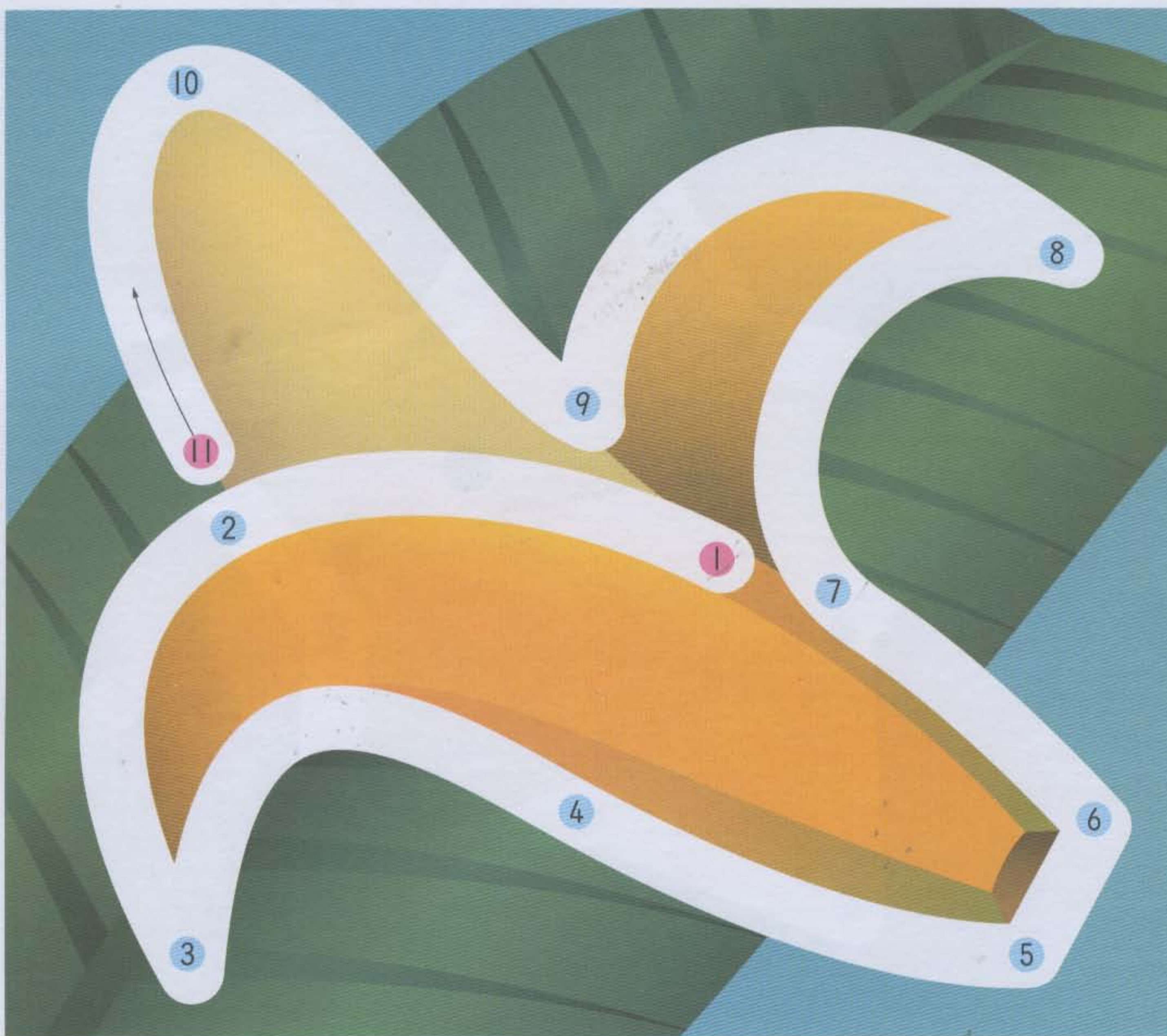


- Say each number aloud as you trace it.

1	2	3	4	5	6	7	8	9	10
11	12	13	14	15	16	17	18	19	20

# 11 to 1

■ Draw a line from 11 back to 1 while saying each number.



■ Say each number aloud as you trace it.

20	19	18	17	16	15	14	13	12	11
10	9	8	7	6	5	4	3	2	1

# 3

## Saying and Writing Numbers

1 to 12

Name \_\_\_\_\_

Date \_\_\_\_\_

■ Draw a line from 1 to 12 in order while saying each number.



■ Say each number aloud as you trace it.

1	2	3	4	5	6	7	8	9	10
11	12	13	14	15	16	17	18	19	20

12 to 1

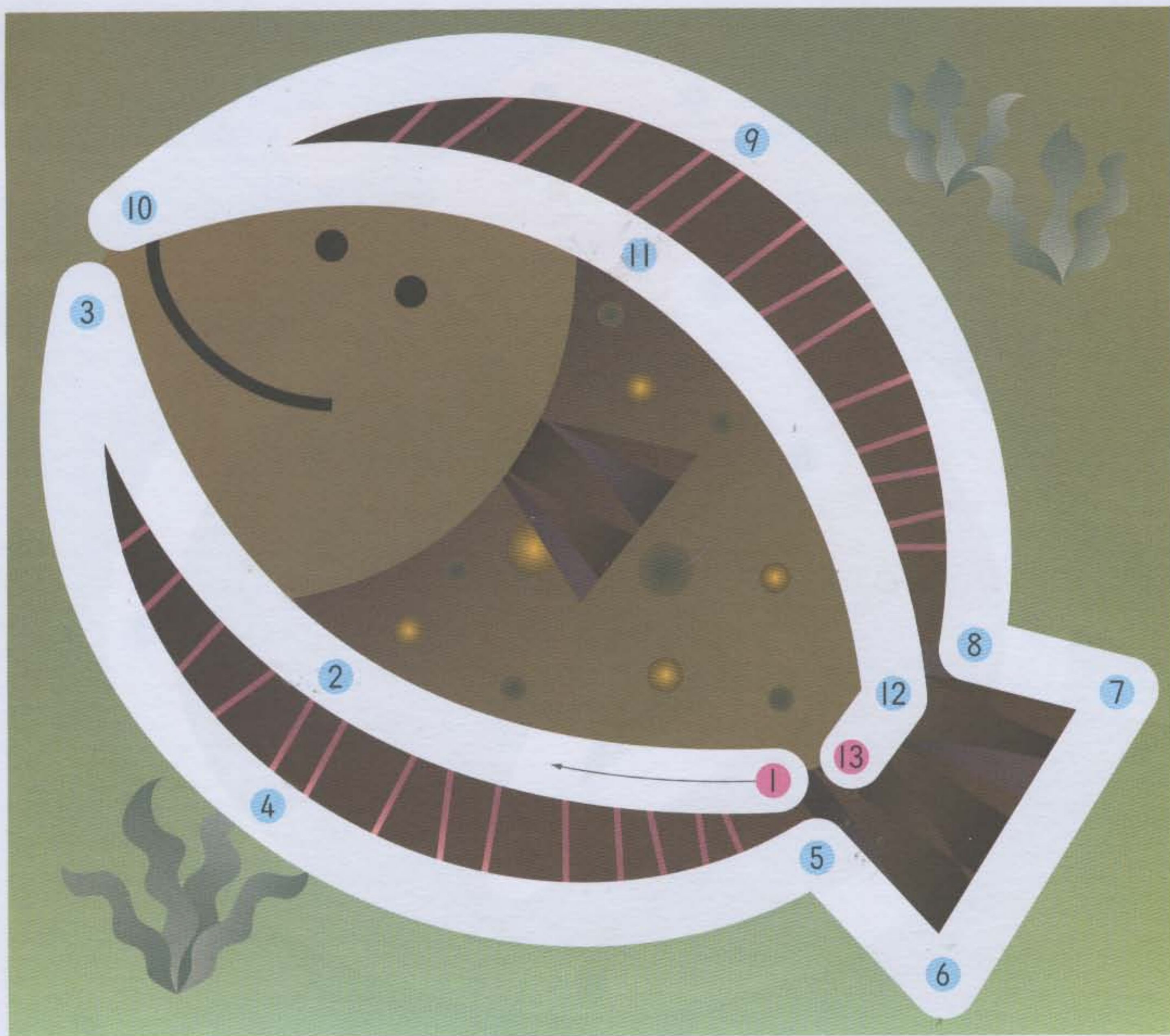
■ Draw a line from 12 back to 1 while saying each number.



■ Say each number aloud as you trace it.

20	19	18	17	16	15	14	13	12	11
10	9	8	7	6	5	4	3	2	1

- Draw a line from 1 to 13 in order while saying each number.



- Say each number aloud as you trace it.

1	2	3	4	5	6	7	8	9	10
11	12	13	14	15	16	17	18	19	20

13 to 1

- Draw a line from 13 back to 1 while saying each number.



- Say each number aloud as you trace it.

20	19	18	17	16	15	14	13	12	11
10	9	8	7	6	5	4	3	2	1

- Draw a line from 1 to 14 in order while saying each number.

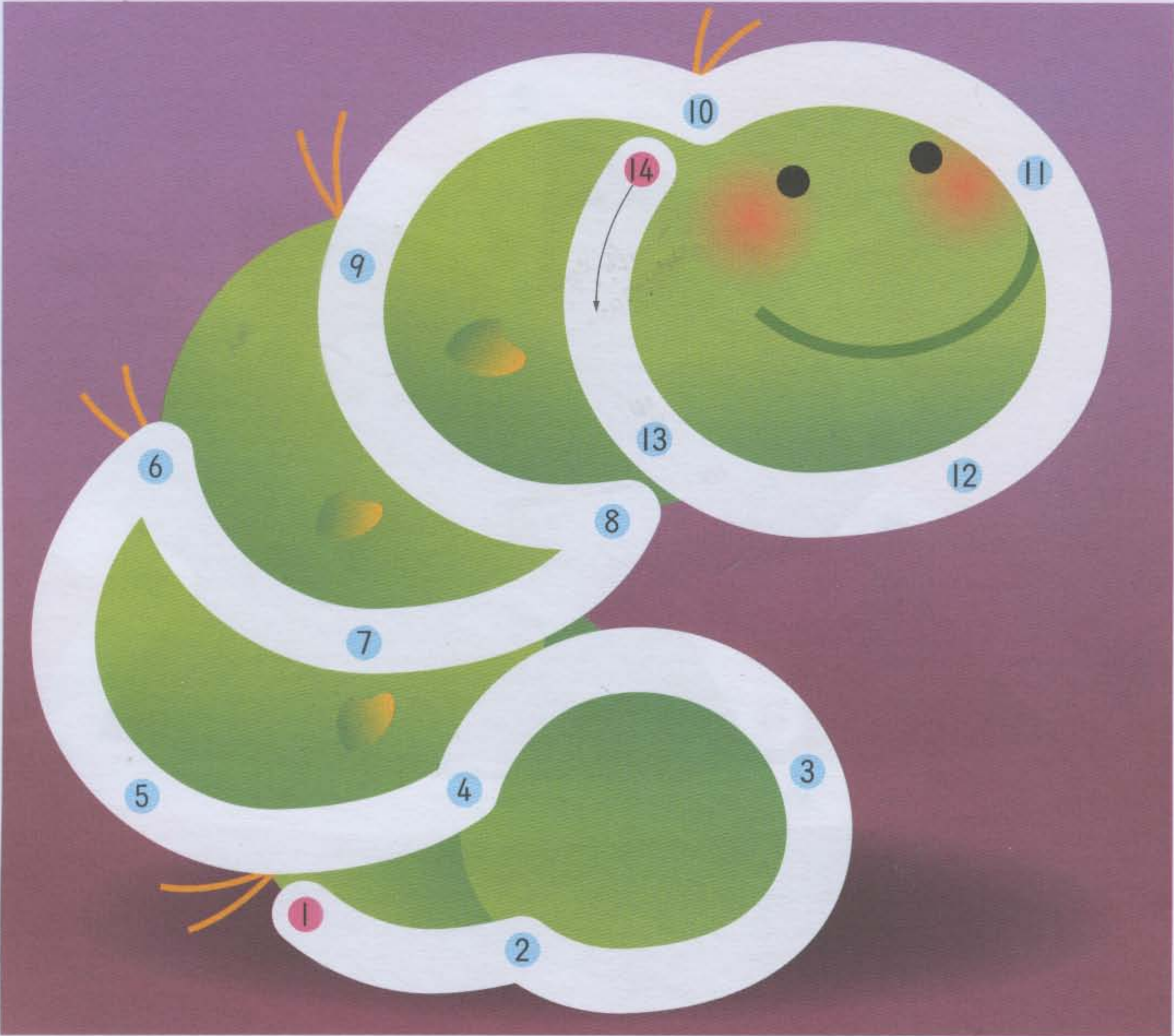


- Say each number aloud as you trace it.

1	2	3	4	5	6	7	8	9	10
11	12	13	14	15	16	17	18	19	20

14 to 1

■ Draw a line from 14 back to 1 while saying each number.

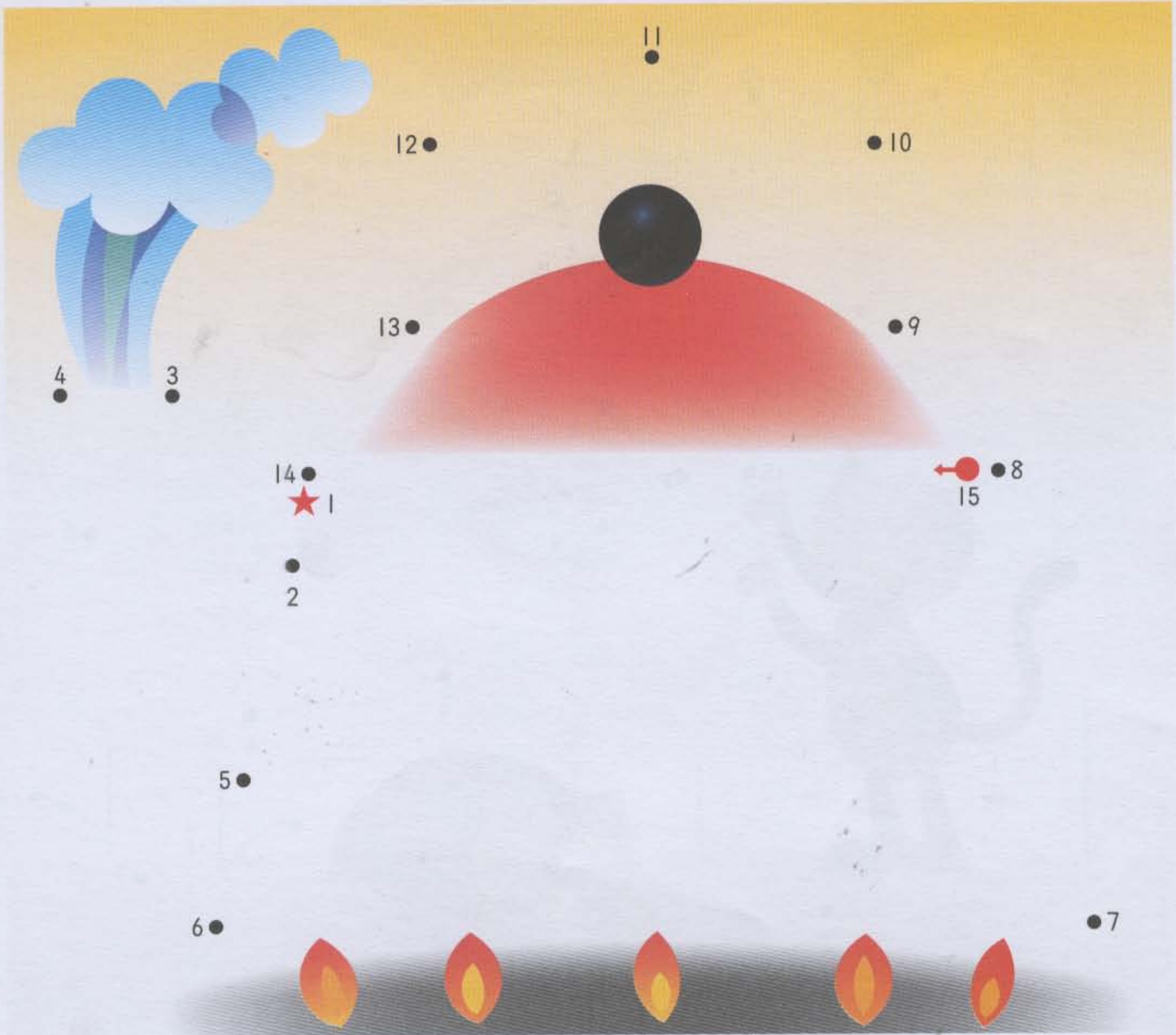


■ Say each number aloud as you trace it.

20	19	18	17	16	15	14	13	12	11
10	9	8	7	6	5	4	3	2	1

Name	
Date	

■ Draw a line from 15 back to 1 while saying each number.



■ Say each number aloud as you trace it.

20	19	18	17	16	15	14	13	12	11
10	9	8	7	6	5	4	3	2	1

16 to 1

■ Draw a line from 16 back to 1 while saying each number.



■ Say each number aloud as you trace it.

20	19	18	17	16	15	14	13	12	11
10	9	8	7	6	5	4	3	2	1

# 7

## Saying and Writing Numbers

17 to 1

Name
Date

■ Draw a line from 17 back to 1 while saying each number.

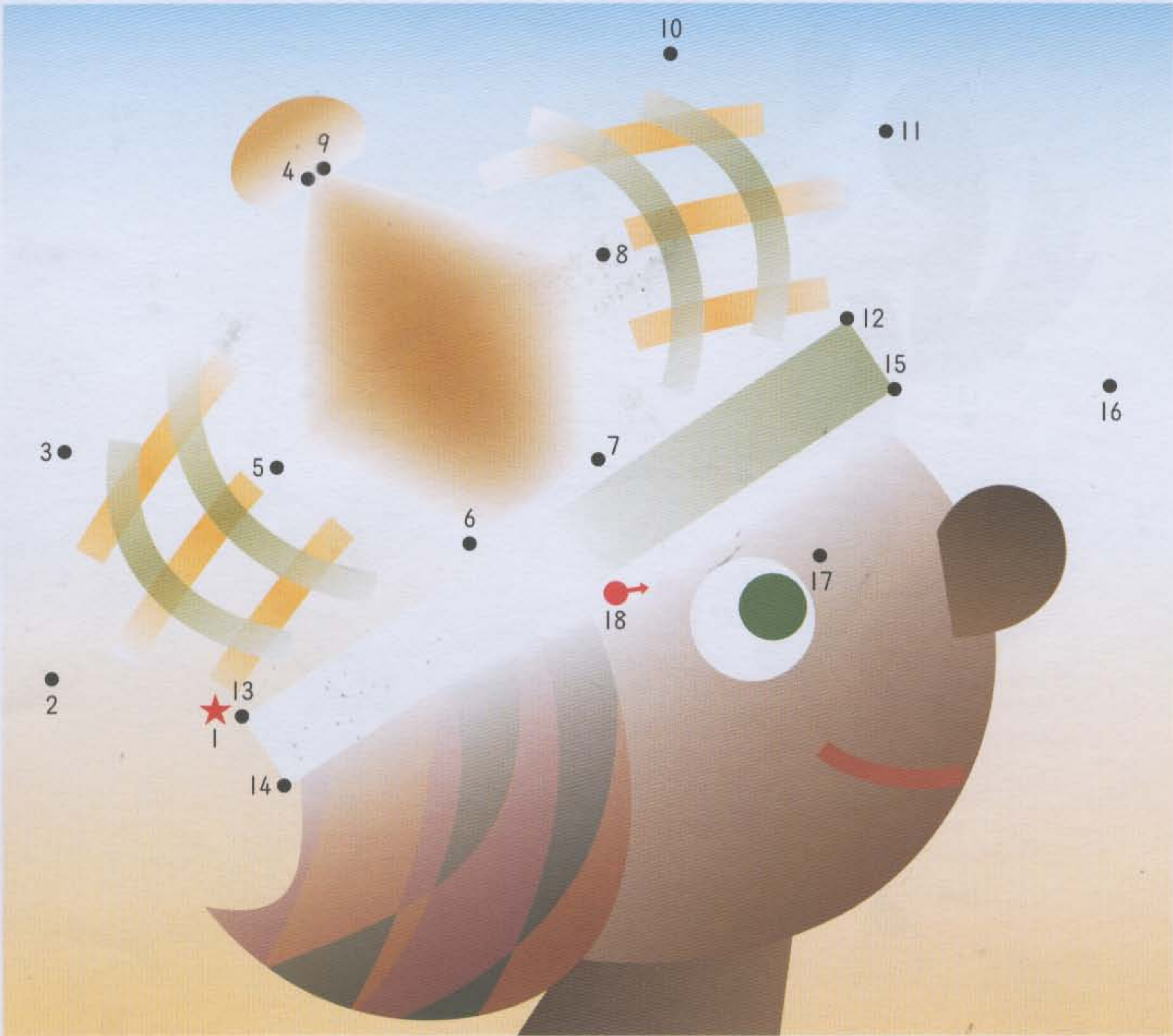


■ Say each number aloud as you trace it.

20	19	18	17	16	15	14	13	12	11
10	9	8	7	6	5	4	3	2	1

18 to 1

■ Draw a line from 18 back to 1 while saying each number.



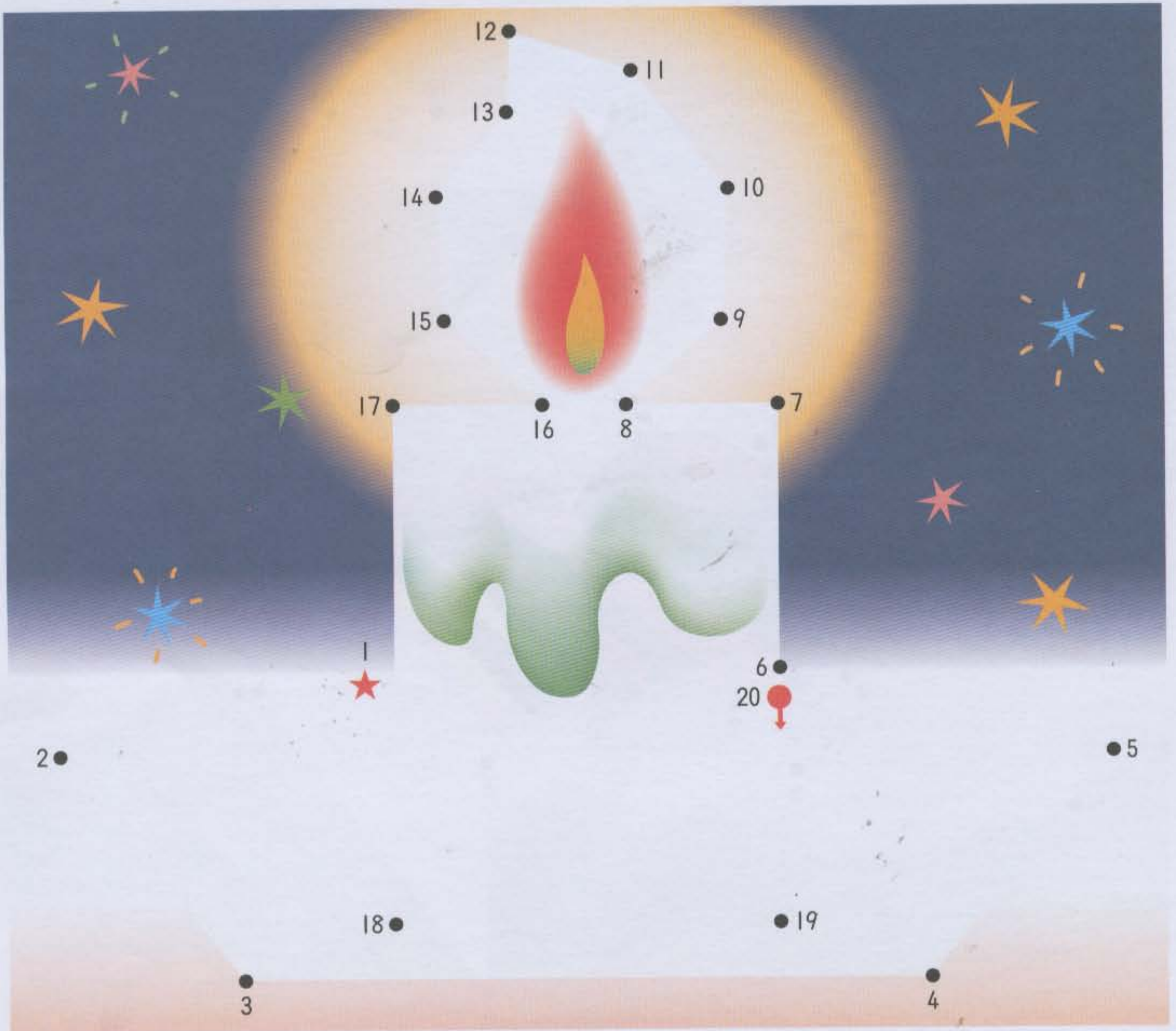
■ Say each number aloud as you trace it.

20	19	18	17	16	15	14	13	12	11
10	9	8	7	6	5	4	3	2	1



20 to 1

■ Draw a line from 20 back to 1 while saying each number.



■ Say each number aloud as you trace it.

20	19	18	17	16	15	14	13	12	11
10	9	8	7	6	5	4	3	2	1

9

## Subtracting 1

2-1 to 9-1

Name

Date

## To parents

If you subtract 1 from a number, the result is the number before that. For example, the result of 9-1 is 8, which is the number before 9. Please use the number chart as a guide in order to help your child understand this concept, which is a very important step in learning subtraction. Encourage your child to practice until he or she can complete the exercise easily without counting fingers or getting confused.

- Fill in the missing numbers and then add and subtract the numbers below.

10	9	8	7	6	5	4	3	2	1
----	---	---	---	---	---	---	---	---	---

$$(1) \quad 1 + 1 = 2$$

$$(3) \quad 3 + 1 =$$

$$2 - 1 =$$

$$4 - 1 =$$

$$(2) \quad 2 + 1 =$$

$$(4) \quad 4 + 1 =$$

$$3 - 1 =$$

$$5 - 1 =$$

10	9	8	7	6	5	4	3	2	1
----	---	---	---	---	---	---	---	---	---

$$(5) \quad 5 + 1 =$$

$$(7) \quad 7 + 1 =$$

$$6 - 1 =$$

$$8 - 1 =$$

$$(6) \quad 6 + 1 =$$

$$(8) \quad 8 + 1 =$$

$$7 - 1 =$$

$$9 - 1 =$$

## 2-1 to 10-1

■ Fill in the missing numbers and then subtract the numbers below.

10	9	8	7	6	5	4	3	2	1
----	---	---	---	---	---	---	---	---	---

(1)  $2 - 1 =$

(11)  $6 - 1 =$

(2)  $3 - 1 =$

(12)  $7 - 1 =$

(3)  $4 - 1 =$

(13)  $8 - 1 =$

(4)  $5 - 1 =$

(14)  $9 - 1 =$

(5)  $6 - 1 =$

(15)  $5 - 1 =$

(6)  $7 - 1 =$

(16)  $6 - 1 =$

(7)  $2 - 1 =$

(17)  $7 - 1 =$

(8)  $3 - 1 =$

(18)  $8 - 1 =$

(9)  $4 - 1 =$

(19)  $9 - 1 =$

(10)  $5 - 1 =$

(20)  $10 - 1 =$



# Subtracting 1

2-1 to 10-1

Name
Date

## To parents

If your child is unsure of his or her answer, please encourage him or her to check the result by adding 1 to it.

■ Fill in the missing numbers and then subtract the numbers below.

10	9								
----	---	--	--	--	--	--	--	--	--

(1)  $10 - 1 =$

(11)  $9 - 1 =$

(2)  $9 - 1 =$

(12)  $10 - 1 =$

(3)  $8 - 1 =$

(13)  $5 - 1 =$

(4)  $7 - 1 =$

(14)  $3 - 1 =$

(5)  $6 - 1 =$

(15)  $9 - 1 =$

(6)  $5 - 1 =$

(16)  $2 - 1 =$

(7)  $4 - 1 =$

(17)  $6 - 1 =$

(8)  $3 - 1 =$

(18)  $10 - 1 =$

(9)  $2 - 1 =$

(19)  $8 - 1 =$

(10)  $7 - 1 =$

(20)  $9 - 1 =$

# 10-1 to 20-1

■ Fill in the missing numbers and then subtract the numbers below.

20	19	18	17	16	15	14	13	12	11
10	9	8	7	6	5	4	3	2	1

(1)  $10 - 1 =$

(10)  $12 - 1 =$

(2)  $11 - 1 =$

(11)  $13 - 1 =$

(3)  $12 - 1 =$

(12)  $14 - 1 =$

(4)  $13 - 1 =$

(13)  $15 - 1 =$

(5)  $14 - 1 =$

(14)  $16 - 1 =$

(6)  $15 - 1 =$

(15)  $17 - 1 =$

(7)  $16 - 1 =$

(16)  $18 - 1 =$

(8)  $10 - 1 =$

(17)  $19 - 1 =$

(9)  $11 - 1 =$

(18)  $20 - 1 =$



# Subtracting 1

2-1 to 15-1

Name
Date

■ Fill in the missing numbers and then subtract the numbers below.

20	19	18	17	16	15	14	13	12	11
10	9	8	7	6	5	4	3	2	1

(1) 2 - 1 =

(10) 3 - 1 =

(2) 3 - 1 =

(11) 15 - 1 =

(3) 4 - 1 =

(12) 13 - 1 =

(4) 5 - 1 =

(13) 4 - 1 =

(5) 12 - 1 =

(14) 14 - 1 =

(6) 13 - 1 =

(15) 2 - 1 =

(7) 14 - 1 =

(16) 5 - 1 =

(8) 15 - 1 =

(17) 12 - 1 =

(9) 12 - 1 =

(18) 13 - 1 =

## 6-1 to 20-1

■ Subtract the numbers below.

$$(1) \quad 6 - 1 =$$

$$(11) \quad 20 - 1 =$$

$$(2) \quad 7 - 1 =$$

$$(12) \quad 17 - 1 =$$

$$(3) \quad 8 - 1 =$$

$$(13) \quad 19 - 1 =$$

$$(4) \quad 9 - 1 =$$

$$(14) \quad 8 - 1 =$$

$$(5) \quad 10 - 1 =$$

$$(15) \quad 17 - 1 =$$

$$(6) \quad 11 - 1 =$$

$$(16) \quad 9 - 1 =$$

$$(7) \quad 16 - 1 =$$

$$(17) \quad 16 - 1 =$$

$$(8) \quad 17 - 1 =$$

$$(18) \quad 18 - 1 =$$

$$(9) \quad 18 - 1 =$$

$$(19) \quad 10 - 1 =$$

$$(10) \quad 19 - 1 =$$

$$(20) \quad 20 - 1 =$$

Name

Date

■ Subtract the numbers below.

(1)  $3 - 1 =$

(11)  $12 - 1 =$

(2)  $2 - 1 =$

(12)  $19 - 1 =$

(3)  $18 - 1 =$

(13)  $4 - 1 =$

(4)  $9 - 1 =$

(14)  $14 - 1 =$

(5)  $6 - 1 =$

(15)  $8 - 1 =$

(6)  $13 - 1 =$

(16)  $2 - 1 =$

(7)  $11 - 1 =$

(17)  $15 - 1 =$

(8)  $16 - 1 =$

(18)  $7 - 1 =$

(9)  $5 - 1 =$

(19)  $20 - 1 =$

(10)  $17 - 1 =$

(20)  $10 - 1 =$

■ Subtract the numbers below.

$$(1) \quad 6 - 1 =$$

$$(11) \quad 13 - 1 =$$

$$(2) \quad 11 - 1 =$$

$$(12) \quad 7 - 1 =$$

$$(3) \quad 20 - 1 =$$

$$(13) \quad 12 - 1 =$$

$$(4) \quad 9 - 1 =$$

$$(14) \quad 2 - 1 =$$

$$(5) \quad 18 - 1 =$$

$$(15) \quad 10 - 1 =$$

$$(6) \quad 3 - 1 =$$

$$(16) \quad 17 - 1 =$$

$$(7) \quad 19 - 1 =$$

$$(17) \quad 4 - 1 =$$

$$(8) \quad 5 - 1 =$$

$$(18) \quad 16 - 1 =$$

$$(9) \quad 8 - 1 =$$

$$(19) \quad 20 - 1 =$$

$$(10) \quad 15 - 1 =$$

$$(20) \quad 14 - 1 =$$

# 13

## Subtracting 2

3-2 to 10-2

Name
Date

**To parents**  
Starting with this page, your child will learn to subtract the number 2. If you subtract 2 from a number, the result is the number before the previous number. For example, the result of 9-2 is 7, which is the number before the number before 9. Please have your child use the number chart as a guide. If your child seems to be having difficulty, encourage him or her to return to the section on subtracting 1.

■ Fill in the missing numbers and then add and subtract the numbers below.

10	9	8	7	6	5	4	3	2	1
----	---	---	---	---	---	---	---	---	---

(1)  $1 + 2 = 3$

(3)  $3 + 2 = 5$

$3 - 2 = 1$

$5 - 2 = 3$

(2)  $2 + 2 = 4$

(4)  $4 + 2 = 6$

$4 - 2 = 2$

$6 - 2 = 4$

10	9	8	7	6	5	4	3	2	1
----	---	---	---	---	---	---	---	---	---

(5)  $5 + 2 = 7$

(7)  $7 + 2 = 9$

$7 - 2 = 5$

$9 - 2 = 7$

(6)  $6 + 2 = 8$

(8)  $8 + 2 = 10$

$8 - 2 = 6$

$10 - 2 = 8$

■ Fill in the missing numbers and then subtract the numbers below.

10	9	8	7	6	5	4	3	2	1
----	---	---	---	---	---	---	---	---	---

(1)  $3 - 2 =$

(11)  $7 - 2 =$

(2)  $4 - 2 =$

(12)  $8 - 2 =$

(3)  $5 - 2 =$

(13)  $9 - 2 =$

(4)  $6 - 2 =$

(14)  $4 - 2 =$

(5)  $7 - 2 =$

(15)  $5 - 2 =$

(6)  $8 - 2 =$

(16)  $6 - 2 =$

(7)  $3 - 2 =$

(17)  $7 - 2 =$

(8)  $4 - 2 =$

(18)  $8 - 2 =$

(9)  $5 - 2 =$

(19)  $9 - 2 =$

(10)  $6 - 2 =$

(20)  $10 - 2 =$

Name

Date

■ Fill in the missing numbers and then subtract the numbers below.

10	9	8							
----	---	---	--	--	--	--	--	--	--

(1)  $10 - 2 =$

(11)  $4 - 2 =$

(2)  $9 - 2 =$

(12)  $8 - 2 =$

(3)  $8 - 2 =$

(13)  $3 - 2 =$

(4)  $7 - 2 =$

(14)  $6 - 2 =$

(5)  $6 - 2 =$

(15)  $9 - 2 =$

(6)  $5 - 2 =$

(16)  $7 - 2 =$

(7)  $4 - 2 =$

(17)  $5 - 2 =$

(8)  $3 - 2 =$

(18)  $10 - 2 =$

(9)  $10 - 2 =$

(19)  $8 - 2 =$

(10)  $7 - 2 =$

(20)  $9 - 2 =$

# 9-2 to 20-2

■ Fill in the missing numbers and then subtract the numbers below.

20	19	18	17	16	15	14	13	12	11
10	9	8	7	6	5	4	3	2	1

(1)  $10 - 2 =$

(10)  $12 - 2 =$

(2)  $11 - 2 =$

(11)  $13 - 2 =$

(3)  $12 - 2 =$

(12)  $14 - 2 =$

(4)  $13 - 2 =$

(13)  $15 - 2 =$

(5)  $14 - 2 =$

(14)  $16 - 2 =$

(6)  $15 - 2 =$

(15)  $17 - 2 =$

(7)  $9 - 2 =$

(16)  $18 - 2 =$

(8)  $10 - 2 =$

(17)  $19 - 2 =$

(9)  $11 - 2 =$

(18)  $20 - 2 =$

Name
Date

■ Fill in the missing numbers and then subtract the numbers below.

20	19	18	17	16	15	14	13	12	11
10	9	8	7	6	5	4	3	2	1

(1)  $3 - 2 =$

(10)  $5 - 2 =$

(2)  $4 - 2 =$

(11)  $3 - 2 =$

(3)  $5 - 2 =$

(12)  $15 - 2 =$

(4)  $6 - 2 =$

(13)  $6 - 2 =$

(5)  $13 - 2 =$

(14)  $14 - 2 =$

(6)  $14 - 2 =$

(15)  $4 - 2 =$

(7)  $15 - 2 =$

(16)  $13 - 2 =$

(8)  $16 - 2 =$

(17)  $16 - 2 =$

(9)  $13 - 2 =$

(18)  $14 - 2 =$

## 7-2 to 20-2

■ Subtract the numbers below.

$$(1) \quad 7 - 2 =$$

$$(11) \quad 8 - 2 =$$

$$(2) \quad 8 - 2 =$$

$$(12) \quad 17 - 2 =$$

$$(3) \quad 9 - 2 =$$

$$(13) \quad 7 - 2 =$$

$$(4) \quad 10 - 2 =$$

$$(14) \quad 19 - 2 =$$

$$(5) \quad 11 - 2 =$$

$$(15) \quad 11 - 2 =$$

$$(6) \quad 12 - 2 =$$

$$(16) \quad 9 - 2 =$$

$$(7) \quad 17 - 2 =$$

$$(17) \quad 20 - 2 =$$

$$(8) \quad 18 - 2 =$$

$$(18) \quad 12 - 2 =$$

$$(9) \quad 19 - 2 =$$

$$(19) \quad 10 - 2 =$$

$$(10) \quad 20 - 2 =$$

$$(20) \quad 18 - 2 =$$

Name
Date

■ Subtract the numbers below.

(1)  $5 - 2 =$

(11)  $15 - 2 =$

(2)  $12 - 2 =$

(12)  $8 - 2 =$

(3)  $9 - 2 =$

(13)  $10 - 2 =$

(4)  $13 - 2 =$

(14)  $14 - 2 =$

(5)  $17 - 2 =$

(15)  $3 - 2 =$

(6)  $4 - 2 =$

(16)  $20 - 2 =$

(7)  $10 - 2 =$

(17)  $16 - 2 =$

(8)  $11 - 2 =$

(18)  $6 - 2 =$

(9)  $7 - 2 =$

(19)  $11 - 2 =$

(10)  $18 - 2 =$

(20)  $19 - 2 =$

■ Subtract the numbers below.

$$(1) \quad 9 - 2 =$$

$$(11) \quad 13 - 2 =$$

$$(2) \quad 12 - 2 =$$

$$(12) \quad 20 - 2 =$$

$$(3) \quad 16 - 2 =$$

$$(13) \quad 3 - 2 =$$

$$(4) \quad 5 - 2 =$$

$$(14) \quad 17 - 2 =$$

$$(5) \quad 11 - 2 =$$

$$(15) \quad 10 - 2 =$$

$$(6) \quad 18 - 2 =$$

$$(16) \quad 7 - 2 =$$

$$(7) \quad 4 - 2 =$$

$$(17) \quad 20 - 2 =$$

$$(8) \quad 14 - 2 =$$

$$(18) \quad 11 - 2 =$$

$$(9) \quad 19 - 2 =$$

$$(19) \quad 6 - 2 =$$

$$(10) \quad 8 - 2 =$$

$$(20) \quad 15 - 2 =$$

Name

Date

**To parents**

Starting with this page, your child will learn to subtract the number 3. If your child is confused or seems to be having trouble, please encourage him or her to review the sections on subtracting 1 and subtracting 2 before going any further.

■ Fill in the missing numbers and then subtract the numbers below.

10	9	8	7	6	5	4	3	2	1
----	---	---	---	---	---	---	---	---	---

(1)  $4 - 3 =$

(11)  $5 - 3 =$

(2)  $5 - 3 =$

(12)  $6 - 3 =$

(3)  $6 - 3 =$

(13)  $7 - 3 =$

(4)  $7 - 3 =$

(14)  $8 - 3 =$

(5)  $4 - 3 =$

(15)  $9 - 3 =$

(6)  $5 - 3 =$

(16)  $6 - 3 =$

(7)  $6 - 3 =$

(17)  $7 - 3 =$

(8)  $7 - 3 =$

(18)  $8 - 3 =$

(9)  $8 - 3 =$

(19)  $9 - 3 =$

(10)  $4 - 3 =$

(20)  $10 - 3 =$

■ Fill in the missing numbers and then subtract the numbers below.

10	9	8	7						
----	---	---	---	--	--	--	--	--	--

(1)  $7 - 3 =$

(11)  $5 - 3 =$

(2)  $6 - 3 =$

(12)  $8 - 3 =$

(3)  $5 - 3 =$

(13)  $4 - 3 =$

(4)  $4 - 3 =$

(14)  $10 - 3 =$

(5)  $8 - 3 =$

(15)  $7 - 3 =$

(6)  $9 - 3 =$

(16)  $9 - 3 =$

(7)  $10 - 3 =$

(17)  $6 - 3 =$

(8)  $6 - 3 =$

(18)  $5 - 3 =$

(9)  $8 - 3 =$

(19)  $9 - 3 =$

(10)  $10 - 3 =$

(20)  $7 - 3 =$

Name
Date

■ Fill in the missing numbers and then subtract the numbers below.

20	19	18	17	16	15	14	13	12	11
10	9	8	7	6	5	4	3	2	1

(1)

8 - 3 =

(10)

10 - 3 =

(2)

9 - 3 =

(11)

11 - 3 =

(3)

10 - 3 =

(12)

12 - 3 =

(4)

11 - 3 =

(13)

13 - 3 =

(5)

8 - 3 =

(14)

14 - 3 =

(6)

9 - 3 =

(15)

11 - 3 =

(7)

10 - 3 =

(16)

12 - 3 =

(8)

11 - 3 =

(17)

13 - 3 =

(9)

12 - 3 =

(18)

14 - 3 =

## 10-3 to 20-3

■ Fill in the missing numbers and then subtract the numbers below.

20	19	18	17						
			7	6	5	4	3	2	1

(1)  $10 - 3 =$

(10)  $19 - 3 =$

(2)  $11 - 3 =$

(11)  $20 - 3 =$

(3)  $12 - 3 =$

(12)  $14 - 3 =$

(4)  $13 - 3 =$

(13)  $15 - 3 =$

(5)  $14 - 3 =$

(14)  $16 - 3 =$

(6)  $15 - 3 =$

(15)  $17 - 3 =$

(7)  $16 - 3 =$

(16)  $18 - 3 =$

(8)  $17 - 3 =$

(17)  $19 - 3 =$

(9)  $18 - 3 =$

(18)  $20 - 3 =$

Name

Date

■ Fill in the missing numbers and then subtract the numbers below.

20	19	18	17	16	15	14	13	12	11
10	9	8	7	6	5	4	3	2	1

(1)  $4 - 3 =$

(10)  $6 - 3 =$

(2)  $5 - 3 =$

(11)  $17 - 3 =$

(3)  $6 - 3 =$

(12)  $4 - 3 =$

(4)  $7 - 3 =$

(13)  $15 - 3 =$

(5)  $14 - 3 =$

(14)  $7 - 3 =$

(6)  $15 - 3 =$

(15)  $14 - 3 =$

(7)  $16 - 3 =$

(16)  $16 - 3 =$

(8)  $17 - 3 =$

(17)  $5 - 3 =$

(9)  $14 - 3 =$

(18)  $15 - 3 =$

## 8-3 to 20-3

■ Subtract the numbers below.

$$(1) \quad 8 - 3 =$$

$$(11) \quad 12 - 3 =$$

$$(2) \quad 9 - 3 =$$

$$(12) \quad 10 - 3 =$$

$$(3) \quad 10 - 3 =$$

$$(13) \quad 20 - 3 =$$

$$(4) \quad 11 - 3 =$$

$$(14) \quad 8 - 3 =$$

$$(5) \quad 12 - 3 =$$

$$(15) \quad 14 - 3 =$$

$$(6) \quad 13 - 3 =$$

$$(16) \quad 11 - 3 =$$

$$(7) \quad 18 - 3 =$$

$$(17) \quad 18 - 3 =$$

$$(8) \quad 19 - 3 =$$

$$(18) \quad 12 - 3 =$$

$$(9) \quad 20 - 3 =$$

$$(19) \quad 19 - 3 =$$

$$(10) \quad 9 - 3 =$$

$$(20) \quad 11 - 3 =$$

Name \_\_\_\_\_

Date \_\_\_\_\_

■ Subtract the numbers below.

(1)  $5 - 3 =$

(11)  $15 - 3 =$

(2)  $16 - 3 =$

(12)  $6 - 3 =$

(3)  $9 - 3 =$

(13)  $20 - 3 =$

(4)  $10 - 3 =$

(14)  $11 - 3 =$

(5)  $11 - 3 =$

(15)  $12 - 3 =$

(6)  $7 - 3 =$

(16)  $4 - 3 =$

(7)  $13 - 3 =$

(17)  $17 - 3 =$

(8)  $19 - 3 =$

(18)  $18 - 3 =$

(9)  $8 - 3 =$

(19)  $13 - 3 =$

(10)  $14 - 3 =$

(20)  $10 - 3 =$

■ Subtract the numbers below.

(1)  $7 - 3 =$

(11)  $10 - 3 =$

(2)  $18 - 3 =$

(12)  $12 - 3 =$

(3)  $11 - 3 =$

(13)  $19 - 3 =$

(4)  $13 - 3 =$

(14)  $4 - 3 =$

(5)  $6 - 3 =$

(15)  $20 - 3 =$

(6)  $12 - 3 =$

(16)  $11 - 3 =$

(7)  $20 - 3 =$

(17)  $8 - 3 =$

(8)  $5 - 3 =$

(18)  $14 - 3 =$

(9)  $16 - 3 =$

(19)  $17 - 3 =$

(10)  $15 - 3 =$

(20)  $9 - 3 =$

Name

Date

**To parents**

Starting with this page, your child will review subtracting 1, 2, and 3. If your child is unsure of his or her answer, please encourage him or her to check the result by adding it to the number subtracted. If your child is correct, the new result will be the original number from which a number was subtracted.

■ Subtract the numbers below.

$$(1) \quad 2 - 1 =$$

$$(11) \quad 7 - 2 =$$

$$(2) \quad 3 - 1 =$$

$$(12) \quad 8 - 1 =$$

$$(3) \quad 3 - 2 =$$

$$(13) \quad 8 - 2 =$$

$$(4) \quad 4 - 1 =$$

$$(14) \quad 9 - 1 =$$

$$(5) \quad 4 - 2 =$$

$$(15) \quad 9 - 2 =$$

$$(6) \quad 5 - 1 =$$

$$(16) \quad 10 - 1 =$$

$$(7) \quad 5 - 2 =$$

$$(17) \quad 10 - 2 =$$

$$(8) \quad 6 - 1 =$$

$$(18) \quad 11 - 1 =$$

$$(9) \quad 6 - 2 =$$

$$(19) \quad 11 - 2 =$$

$$(10) \quad 7 - 1 =$$

$$(20) \quad 12 - 1 =$$

■ Subtract the numbers below.

$$(1) \quad 12 - 1 =$$

$$(11) \quad 17 - 1 =$$

$$(2) \quad 12 - 2 =$$

$$(12) \quad 17 - 2 =$$

$$(3) \quad 13 - 1 =$$

$$(13) \quad 18 - 1 =$$

$$(4) \quad 13 - 2 =$$

$$(14) \quad 18 - 2 =$$

$$(5) \quad 14 - 1 =$$

$$(15) \quad 19 - 1 =$$

$$(6) \quad 14 - 2 =$$

$$(16) \quad 19 - 2 =$$

$$(7) \quad 15 - 1 =$$

$$(17) \quad 20 - 1 =$$

$$(8) \quad 15 - 2 =$$

$$(18) \quad 20 - 2 =$$

$$(9) \quad 16 - 1 =$$

$$(19) \quad 11 - 1 =$$

$$(10) \quad 16 - 2 =$$

$$(20) \quad 11 - 2 =$$

Name

Date

■ Subtract the numbers below.

(1)  $2 - 1 =$

(11)  $6 - 2 =$

(2)  $3 - 1 =$

(12)  $6 - 3 =$

(3)  $3 - 2 =$

(13)  $7 - 1 =$

(4)  $4 - 1 =$

(14)  $7 - 2 =$

(5)  $4 - 2 =$

(15)  $7 - 3 =$

(6)  $4 - 3 =$

(16)  $8 - 1 =$

(7)  $5 - 1 =$

(17)  $8 - 2 =$

(8)  $5 - 2 =$

(18)  $8 - 3 =$

(9)  $5 - 3 =$

(19)  $9 - 1 =$

(10)  $6 - 1 =$

(20)  $9 - 2 =$

■ Subtract the numbers below.

$$(1) \quad 9 - 1 =$$

$$(11) \quad 12 - 2 =$$

$$(2) \quad 9 - 2 =$$

$$(12) \quad 12 - 3 =$$

$$(3) \quad 9 - 3 =$$

$$(13) \quad 13 - 1 =$$

$$(4) \quad 10 - 1 =$$

$$(14) \quad 13 - 2 =$$

$$(5) \quad 10 - 2 =$$

$$(15) \quad 13 - 3 =$$

$$(6) \quad 10 - 3 =$$

$$(16) \quad 14 - 1 =$$

$$(7) \quad 11 - 1 =$$

$$(17) \quad 14 - 2 =$$

$$(8) \quad 11 - 2 =$$

$$(18) \quad 14 - 3 =$$

$$(9) \quad 11 - 3 =$$

$$(19) \quad 15 - 1 =$$

$$(10) \quad 12 - 1 =$$

$$(20) \quad 15 - 2 =$$

Name

Date

■ Subtract the numbers below.

(1)  $15 - 1 =$

(11)  $18 - 2 =$

(2)  $15 - 2 =$

(12)  $18 - 3 =$

(3)  $15 - 3 =$

(13)  $19 - 1 =$

(4)  $16 - 1 =$

(14)  $19 - 2 =$

(5)  $16 - 2 =$

(15)  $19 - 3 =$

(6)  $16 - 3 =$

(16)  $20 - 1 =$

(7)  $17 - 1 =$

(17)  $20 - 2 =$

(8)  $17 - 2 =$

(18)  $20 - 3 =$

(9)  $17 - 3 =$

(19)  $12 - 2 =$

(10)  $18 - 1 =$

(20)  $12 - 3 =$

■ Subtract the numbers below.

$$(1) \quad 7 - 1 =$$

$$(11) \quad 8 - 1 =$$

$$(2) \quad 12 - 2 =$$

$$(12) \quad 11 - 3 =$$

$$(3) \quad 9 - 2 =$$

$$(13) \quad 6 - 3 =$$

$$(4) \quad 10 - 1 =$$

$$(14) \quad 12 - 1 =$$

$$(5) \quad 8 - 3 =$$

$$(15) \quad 7 - 3 =$$

$$(6) \quad 12 - 3 =$$

$$(16) \quad 10 - 2 =$$

$$(7) \quad 7 - 2 =$$

$$(17) \quad 9 - 3 =$$

$$(8) \quad 10 - 3 =$$

$$(18) \quad 11 - 1 =$$

$$(9) \quad 8 - 2 =$$

$$(19) \quad 9 - 1 =$$

$$(10) \quad 11 - 2 =$$

$$(20) \quad 6 - 2 =$$

Name

Date

**To parents**

Starting with this page, your child will learn to subtract the number 4. If your child is confused or seems to be having trouble, please encourage him or her to return to the previous section before going any further.

- Fill in the missing numbers and then subtract the numbers below.

10	9	8	7	6					
----	---	---	---	---	--	--	--	--	--

(1)  $5 - 2 =$

(11)  $8 - 3 =$

(2)  $5 - 3 =$

(12)  $8 - 4 =$

(3)  $5 - 4 =$

(13)  $9 - 1 =$

(4)  $6 - 2 =$

(14)  $9 - 2 =$

(5)  $6 - 3 =$

(15)  $9 - 3 =$

(6)  $6 - 4 =$

(16)  $9 - 4 =$

(7)  $7 - 2 =$

(17)  $10 - 1 =$

(8)  $7 - 3 =$

(18)  $10 - 2 =$

(9)  $7 - 4 =$

(19)  $10 - 3 =$

(10)  $8 - 2 =$

(20)  $10 - 4 =$

# 11-2 to 14-4

■ Fill in the missing numbers and then subtract the numbers below.

20	19	18	17	16	15	14	13	12	11
	9		7		5		3		1

(1)  $5 - 4 =$

(10)  $12 - 2 =$

(2)  $6 - 4 =$

(11)  $12 - 3 =$

(3)  $7 - 4 =$

(12)  $12 - 4 =$

(4)  $8 - 4 =$

(13)  $13 - 2 =$

(5)  $9 - 4 =$

(14)  $13 - 3 =$

(6)  $10 - 4 =$

(15)  $13 - 4 =$

(7)  $11 - 2 =$

(16)  $14 - 2 =$

(8)  $11 - 3 =$

(17)  $14 - 3 =$

(9)  $11 - 4 =$

(18)  $14 - 4 =$

Name

Date

■ Fill in the missing numbers and then subtract the numbers below.

20	19	18	17	16		14		12	
10		8		6	5	4	3	2	1

(1)  $10 - 4 =$

(10)  $16 - 3 =$

(2)  $11 - 4 =$

(11)  $16 - 4 =$

(3)  $12 - 4 =$

(12)  $17 - 2 =$

(4)  $13 - 4 =$

(13)  $17 - 3 =$

(5)  $14 - 4 =$

(14)  $17 - 4 =$

(6)  $15 - 2 =$

(15)  $18 - 1 =$

(7)  $15 - 3 =$

(16)  $18 - 2 =$

(8)  $15 - 4 =$

(17)  $18 - 3 =$

(9)  $16 - 2 =$

(18)  $18 - 4 =$

## 19-2 to 20-4

■ Subtract the numbers below.

$$(1) \quad 13 - 4 =$$

$$(11) \quad 20 - 3 =$$

$$(2) \quad 14 - 4 =$$

$$(12) \quad 20 - 4 =$$

$$(3) \quad 15 - 4 =$$

$$(13) \quad 14 - 4 =$$

$$(4) \quad 16 - 4 =$$

$$(14) \quad 16 - 4 =$$

$$(5) \quad 17 - 4 =$$

$$(15) \quad 17 - 4 =$$

$$(6) \quad 18 - 4 =$$

$$(16) \quad 20 - 4 =$$

$$(7) \quad 19 - 2 =$$

$$(17) \quad 15 - 4 =$$

$$(8) \quad 19 - 3 =$$

$$(18) \quad 18 - 4 =$$

$$(9) \quad 19 - 4 =$$

$$(19) \quad 19 - 4 =$$

$$(10) \quad 20 - 2 =$$

$$(20) \quad 13 - 4 =$$

Name \_\_\_\_\_

Date \_\_\_\_\_

■ Subtract the numbers below.

(1)  $5 - 3 =$

(11)  $10 - 3 =$

(2)  $5 - 4 =$

(12)  $10 - 4 =$

(3)  $6 - 3 =$

(13)  $11 - 3 =$

(4)  $6 - 4 =$

(14)  $11 - 4 =$

(5)  $7 - 3 =$

(15)  $12 - 3 =$

(6)  $7 - 4 =$

(16)  $12 - 4 =$

(7)  $8 - 3 =$

(17)  $13 - 3 =$

(8)  $8 - 4 =$

(18)  $13 - 4 =$

(9)  $9 - 3 =$

(19)  $14 - 3 =$

(10)  $9 - 4 =$

(20)  $14 - 4 =$

## 15-3 to 20-4

■ Subtract the numbers below.

$$(1) \quad 15 - 3 =$$

$$(11) \quad 20 - 3 =$$

$$(2) \quad 15 - 4 =$$

$$(12) \quad 20 - 4 =$$

$$(3) \quad 16 - 3 =$$

$$(13) \quad 10 - 4 =$$

$$(4) \quad 16 - 4 =$$

$$(14) \quad 8 - 4 =$$

$$(5) \quad 17 - 3 =$$

$$(15) \quad 11 - 4 =$$

$$(6) \quad 17 - 4 =$$

$$(16) \quad 5 - 4 =$$

$$(7) \quad 18 - 3 =$$

$$(17) \quad 12 - 4 =$$

$$(8) \quad 18 - 4 =$$

$$(18) \quad 7 - 4 =$$

$$(9) \quad 19 - 3 =$$

$$(19) \quad 6 - 4 =$$

$$(10) \quad 19 - 4 =$$

$$(20) \quad 9 - 4 =$$

Name

Date

■ Subtract the numbers below.

(1)  $17 - 4 =$

(11)  $7 - 4 =$

(2)  $5 - 4 =$

(12)  $18 - 4 =$

(3)  $11 - 4 =$

(13)  $12 - 4 =$

(4)  $6 - 4 =$

(14)  $10 - 4 =$

(5)  $14 - 4 =$

(15)  $15 - 4 =$

(6)  $8 - 4 =$

(16)  $13 - 4 =$

(7)  $20 - 4 =$

(17)  $9 - 4 =$

(8)  $12 - 4 =$

(18)  $19 - 4 =$

(9)  $16 - 4 =$

(19)  $11 - 4 =$

(10)  $14 - 4 =$

(20)  $13 - 4 =$

■ Subtract the numbers below.

(1)  $16 - 4 =$

(11)  $14 - 4 =$

(2)  $12 - 4 =$

(12)  $8 - 4 =$

(3)  $5 - 4 =$

(13)  $6 - 4 =$

(4)  $15 - 4 =$

(14)  $13 - 4 =$

(5)  $7 - 4 =$

(15)  $11 - 4 =$

(6)  $10 - 4 =$

(16)  $18 - 4 =$

(7)  $17 - 4 =$

(17)  $9 - 4 =$

(8)  $11 - 4 =$

(18)  $20 - 4 =$

(9)  $19 - 4 =$

(19)  $12 - 4 =$

(10)  $13 - 4 =$

(20)  $14 - 4 =$

Name \_\_\_\_\_

Date \_\_\_\_\_

**To parents**

Starting with this page, your child will learn to subtract the number 5. If your child is confused or seems to be having trouble, please encourage him or her to return to the previous section before going any further.

- Fill in the missing numbers and then subtract the numbers below.

10	9								
----	---	--	--	--	--	--	--	--	--

(1)  $6 - 3 =$

(11)  $9 - 1 =$

(2)  $6 - 4 =$

(12)  $9 - 2 =$

(3)  $6 - 5 =$

(13)  $9 - 3 =$

(4)  $7 - 3 =$

(14)  $9 - 4 =$

(5)  $7 - 4 =$

(15)  $9 - 5 =$

(6)  $7 - 5 =$

(16)  $10 - 1 =$

(7)  $8 - 2 =$

(17)  $10 - 2 =$

(8)  $8 - 3 =$

(18)  $10 - 3 =$

(9)  $8 - 4 =$

(19)  $10 - 4 =$

(10)  $8 - 5 =$

(20)  $10 - 5 =$

## 11-3 to 14-5

■ Fill in the missing numbers and then subtract the numbers below.

20	19	18	17	16	15	14	13	12	11

(1)  $6 - 5 =$

(10)  $12 - 4 =$

(2)  $7 - 5 =$

(11)  $12 - 5 =$

(3)  $8 - 5 =$

(12)  $13 - 3 =$

(4)  $9 - 5 =$

(13)  $13 - 4 =$

(5)  $10 - 5 =$

(14)  $13 - 5 =$

(6)  $11 - 3 =$

(15)  $14 - 2 =$

(7)  $11 - 4 =$

(16)  $14 - 3 =$

(8)  $11 - 5 =$

(17)  $14 - 4 =$

(9)  $12 - 3 =$

(18)  $14 - 5 =$

Name

Date

■ Fill in the missing numbers and then subtract the numbers below.

20									

(1)  $11 - 5 =$

(10)  $16 - 5 =$

(2)  $12 - 5 =$

(11)  $17 - 3 =$

(3)  $13 - 5 =$

(12)  $17 - 4 =$

(4)  $14 - 5 =$

(13)  $17 - 5 =$

(5)  $15 - 3 =$

(14)  $18 - 1 =$

(6)  $15 - 4 =$

(15)  $18 - 2 =$

(7)  $15 - 5 =$

(16)  $18 - 3 =$

(8)  $16 - 3 =$

(17)  $18 - 4 =$

(9)  $16 - 4 =$

(18)  $18 - 5 =$

## 19-3 to 20-5

■ Subtract the numbers below.

$$(1) \quad 14 - 5 =$$

$$(11) \quad 20 - 5 =$$

$$(2) \quad 15 - 5 =$$

$$(12) \quad 19 - 5 =$$

$$(3) \quad 16 - 5 =$$

$$(13) \quad 14 - 5 =$$

$$(4) \quad 17 - 5 =$$

$$(14) \quad 15 - 5 =$$

$$(5) \quad 18 - 5 =$$

$$(15) \quad 19 - 5 =$$

$$(6) \quad 19 - 3 =$$

$$(16) \quad 17 - 5 =$$

$$(7) \quad 19 - 4 =$$

$$(17) \quad 20 - 5 =$$

$$(8) \quad 19 - 5 =$$

$$(18) \quad 16 - 5 =$$

$$(9) \quad 20 - 3 =$$

$$(19) \quad 20 - 5 =$$

$$(10) \quad 20 - 4 =$$

$$(20) \quad 18 - 5 =$$

Name

Date

■ Subtract the numbers below.

(1)  $6 - 4 =$

(11)  $11 - 4 =$

(2)  $6 - 5 =$

(12)  $11 - 5 =$

(3)  $7 - 4 =$

(13)  $12 - 4 =$

(4)  $7 - 5 =$

(14)  $12 - 5 =$

(5)  $8 - 4 =$

(15)  $13 - 4 =$

(6)  $8 - 5 =$

(16)  $13 - 5 =$

(7)  $9 - 4 =$

(17)  $14 - 4 =$

(8)  $9 - 5 =$

(18)  $14 - 5 =$

(9)  $10 - 4 =$

(19)  $15 - 4 =$

(10)  $10 - 5 =$

(20)  $15 - 5 =$

## 16-4 to 20-5

■ Subtract the numbers below.

$$(1) \quad 16 - 4 =$$

$$(11) \quad 15 - 5 =$$

$$(2) \quad 16 - 5 =$$

$$(12) \quad 11 - 5 =$$

$$(3) \quad 17 - 4 =$$

$$(13) \quad 13 - 5 =$$

$$(4) \quad 17 - 5 =$$

$$(14) \quad 6 - 5 =$$

$$(5) \quad 18 - 4 =$$

$$(15) \quad 12 - 5 =$$

$$(6) \quad 18 - 5 =$$

$$(16) \quad 8 - 5 =$$

$$(7) \quad 19 - 4 =$$

$$(17) \quad 10 - 5 =$$

$$(8) \quad 19 - 5 =$$

$$(18) \quad 7 - 5 =$$

$$(9) \quad 20 - 4 =$$

$$(19) \quad 14 - 5 =$$

$$(10) \quad 20 - 5 =$$

$$(20) \quad 9 - 5 =$$

Name

Date

■ Subtract the numbers below.

(1)  $10 - 5 =$

(11)  $17 - 5 =$

(2)  $16 - 5 =$

(12)  $12 - 5 =$

(3)  $18 - 5 =$

(13)  $6 - 5 =$

(4)  $13 - 5 =$

(14)  $10 - 5 =$

(5)  $8 - 5 =$

(15)  $14 - 5 =$

(6)  $11 - 5 =$

(16)  $9 - 5 =$

(7)  $14 - 5 =$

(17)  $13 - 5 =$

(8)  $7 - 5 =$

(18)  $15 - 5 =$

(9)  $20 - 5 =$

(19)  $11 - 5 =$

(10)  $12 - 5 =$

(20)  $19 - 5 =$

■ Subtract the numbers below.

$$(1) \quad 16 - 5 =$$

$$(11) \quad 8 - 5 =$$

$$(2) \quad 20 - 5 =$$

$$(12) \quad 12 - 5 =$$

$$(3) \quad 11 - 5 =$$

$$(13) \quad 13 - 5 =$$

$$(4) \quad 15 - 5 =$$

$$(14) \quad 19 - 5 =$$

$$(5) \quad 14 - 5 =$$

$$(15) \quad 20 - 5 =$$

$$(6) \quad 7 - 5 =$$

$$(16) \quad 6 - 5 =$$

$$(7) \quad 18 - 5 =$$

$$(17) \quad 12 - 5 =$$

$$(8) \quad 14 - 5 =$$

$$(18) \quad 17 - 5 =$$

$$(9) \quad 9 - 5 =$$

$$(19) \quad 10 - 5 =$$

$$(10) \quad 13 - 5 =$$

$$(20) \quad 14 - 5 =$$

Name

Date

■ Subtract the numbers below.

(1)  $5 - 4 =$

(11)  $10 - 5 =$

(2)  $6 - 4 =$

(12)  $11 - 4 =$

(3)  $6 - 5 =$

(13)  $11 - 5 =$

(4)  $7 - 4 =$

(14)  $12 - 4 =$

(5)  $7 - 5 =$

(15)  $12 - 5 =$

(6)  $8 - 4 =$

(16)  $13 - 4 =$

(7)  $8 - 5 =$

(17)  $13 - 5 =$

(8)  $9 - 4 =$

(18)  $14 - 4 =$

(9)  $9 - 5 =$

(19)  $14 - 5 =$

(10)  $10 - 4 =$

(20)  $5 - 4 =$

■ Subtract the numbers below.

$$(1) \quad 15 - 4 =$$

$$(11) \quad 20 - 4 =$$

$$(2) \quad 15 - 5 =$$

$$(12) \quad 20 - 5 =$$

$$(3) \quad 16 - 4 =$$

$$(13) \quad 14 - 5 =$$

$$(4) \quad 16 - 5 =$$

$$(14) \quad 14 - 4 =$$

$$(5) \quad 17 - 4 =$$

$$(15) \quad 13 - 5 =$$

$$(6) \quad 17 - 5 =$$

$$(16) \quad 13 - 4 =$$

$$(7) \quad 18 - 4 =$$

$$(17) \quad 12 - 5 =$$

$$(8) \quad 18 - 5 =$$

$$(18) \quad 12 - 4 =$$

$$(9) \quad 19 - 4 =$$

$$(19) \quad 11 - 5 =$$

$$(10) \quad 19 - 5 =$$

$$(20) \quad 11 - 4 =$$

Name

Date

■ Subtract the numbers below.

(1)  $5 - 4 =$

(11)  $13 - 4 =$

(2)  $6 - 5 =$

(12)  $13 - 5 =$

(3)  $10 - 4 =$

(13)  $11 - 4 =$

(4)  $12 - 4 =$

(14)  $6 - 4 =$

(5)  $12 - 5 =$

(15)  $7 - 5 =$

(6)  $7 - 4 =$

(16)  $9 - 5 =$

(7)  $11 - 4 =$

(17)  $8 - 4 =$

(8)  $11 - 5 =$

(18)  $15 - 5 =$

(9)  $9 - 4 =$

(19)  $14 - 4 =$

(10)  $10 - 5 =$

(20)  $8 - 5 =$

■ Subtract the numbers below.

$$(1) \quad 20 - 5 =$$

$$(11) \quad 16 - 5 =$$

$$(2) \quad 15 - 4 =$$

$$(12) \quad 12 - 4 =$$

$$(3) \quad 16 - 4 =$$

$$(13) \quad 19 - 5 =$$

$$(4) \quad 20 - 4 =$$

$$(14) \quad 17 - 4 =$$

$$(5) \quad 11 - 4 =$$

$$(15) \quad 11 - 5 =$$

$$(6) \quad 17 - 5 =$$

$$(16) \quad 14 - 4 =$$

$$(7) \quad 12 - 5 =$$

$$(17) \quad 13 - 4 =$$

$$(8) \quad 19 - 4 =$$

$$(18) \quad 15 - 5 =$$

$$(9) \quad 18 - 4 =$$

$$(19) \quad 18 - 5 =$$

$$(10) \quad 13 - 5 =$$

$$(20) \quad 14 - 5 =$$

Name

Date

■ Subtract the numbers below.

(1)  $6 - 4 =$

(11)  $6 - 5 =$

(2)  $14 - 4 =$

(12)  $7 - 4 =$

(3)  $7 - 5 =$

(13)  $14 - 5 =$

(4)  $12 - 4 =$

(14)  $11 - 5 =$

(5)  $13 - 5 =$

(15)  $8 - 4 =$

(6)  $5 - 4 =$

(16)  $11 - 4 =$

(7)  $9 - 5 =$

(17)  $15 - 5 =$

(8)  $12 - 5 =$

(18)  $10 - 4 =$

(9)  $9 - 4 =$

(19)  $8 - 5 =$

(10)  $10 - 5 =$

(20)  $13 - 4 =$

■ Subtract the numbers below.

$$(1) \quad 15 - 4 =$$

$$(11) \quad 20 - 4 =$$

$$(2) \quad 17 - 4 =$$

$$(12) \quad 14 - 5 =$$

$$(3) \quad 11 - 4 =$$

$$(13) \quad 19 - 5 =$$

$$(4) \quad 20 - 5 =$$

$$(14) \quad 12 - 4 =$$

$$(5) \quad 16 - 4 =$$

$$(15) \quad 16 - 4 =$$

$$(6) \quad 18 - 5 =$$

$$(16) \quad 13 - 5 =$$

$$(7) \quad 15 - 5 =$$

$$(17) \quad 18 - 4 =$$

$$(8) \quad 11 - 5 =$$

$$(18) \quad 16 - 5 =$$

$$(9) \quad 17 - 5 =$$

$$(19) \quad 12 - 5 =$$

$$(10) \quad 14 - 4 =$$

$$(20) \quad 19 - 4 =$$

Name

Date

**To parents**

Starting with this page, your child will review subtraction formulas taught in this workbook. If your child is confused or seems to be having trouble, please encourage him or her to review the previous sections. Once your child can complete this exercise with ease, it means he or she thoroughly understands the concept of subtracting 1 through 5 from other numbers. Please give your child lots of praise.

## ■ Subtract the numbers below.

(1)  $5 - 1 =$

(11)  $8 - 2 =$

(2)  $4 - 1 =$

(12)  $10 - 2 =$

(3)  $9 - 1 =$

(13)  $11 - 2 =$

(4)  $2 - 1 =$

(14)  $5 - 2 =$

(5)  $7 - 1 =$

(15)  $9 - 2 =$

(6)  $3 - 1 =$

(16)  $4 - 2 =$

(7)  $8 - 1 =$

(17)  $7 - 2 =$

(8)  $6 - 1 =$

(18)  $3 - 2 =$

(9)  $11 - 1 =$

(19)  $6 - 2 =$

(10)  $10 - 1 =$

(20)  $12 - 2 =$

## Subtracting 1, 2, and 3

■ Subtract the numbers below.

$$(1) \quad 6 - 3 =$$

$$(11) \quad 5 - 1 =$$

$$(2) \quad 4 - 3 =$$

$$(12) \quad 6 - 3 =$$

$$(3) \quad 13 - 3 =$$

$$(13) \quad 5 - 3 =$$

$$(4) \quad 8 - 3 =$$

$$(14) \quad 4 - 2 =$$

$$(5) \quad 5 - 3 =$$

$$(15) \quad 2 - 1 =$$

$$(6) \quad 10 - 3 =$$

$$(16) \quad 4 - 1 =$$

$$(7) \quad 7 - 3 =$$

$$(17) \quad 3 - 2 =$$

$$(8) \quad 11 - 3 =$$

$$(18) \quad 4 - 3 =$$

$$(9) \quad 12 - 3 =$$

$$(19) \quad 3 - 1 =$$

$$(10) \quad 9 - 3 =$$

$$(20) \quad 5 - 2 =$$

Name

Date

■ Subtract the numbers below.

(1)  $7 - 1 =$

(11)  $19 - 3 =$

(2)  $15 - 3 =$

(12)  $17 - 2 =$

(3)  $18 - 2 =$

(13)  $16 - 1 =$

(4)  $17 - 2 =$

(14)  $15 - 2 =$

(5)  $11 - 1 =$

(15)  $15 - 1 =$

(6)  $11 - 2 =$

(16)  $8 - 1 =$

(7)  $11 - 3 =$

(17)  $18 - 3 =$

(8)  $20 - 1 =$

(18)  $12 - 2 =$

(9)  $19 - 1 =$

(19)  $12 - 3 =$

(10)  $8 - 3 =$

(20)  $16 - 3 =$

■ Subtract the numbers below.

$$(1) \quad 9 - 1 =$$

$$(11) \quad 9 - 2 =$$

$$(2) \quad 20 - 2 =$$

$$(12) \quad 19 - 2 =$$

$$(3) \quad 14 - 2 =$$

$$(13) \quad 10 - 3 =$$

$$(4) \quad 14 - 3 =$$

$$(14) \quad 13 - 2 =$$

$$(5) \quad 16 - 2 =$$

$$(15) \quad 12 - 1 =$$

$$(6) \quad 8 - 2 =$$

$$(16) \quad 17 - 3 =$$

$$(7) \quad 9 - 3 =$$

$$(17) \quad 20 - 3 =$$

$$(8) \quad 18 - 1 =$$

$$(18) \quad 14 - 1 =$$

$$(9) \quad 10 - 1 =$$

$$(19) \quad 10 - 2 =$$

$$(10) \quad 13 - 1 =$$

$$(20) \quad 13 - 3 =$$

Name

Date

■ Subtract the numbers below.

(1)  $9 - 1 =$

(11)  $8 - 3 =$

(2)  $7 - 3 =$

(12)  $4 - 2 =$

(3)  $6 - 3 =$

(13)  $7 - 4 =$

(4)  $9 - 4 =$

(14)  $9 - 3 =$

(5)  $4 - 1 =$

(15)  $7 - 1 =$

(6)  $5 - 4 =$

(16)  $6 - 5 =$

(7)  $9 - 2 =$

(17)  $7 - 2 =$

(8)  $12 - 4 =$

(18)  $3 - 2 =$

(9)  $12 - 5 =$

(19)  $2 - 1 =$

(10)  $13 - 5 =$

(20)  $8 - 5 =$

■ Subtract the numbers below.

$$(1) \quad 10 - 2 =$$

$$(11) \quad 5 - 1 =$$

$$(2) \quad 3 - 1 =$$

$$(12) \quad 6 - 1 =$$

$$(3) \quad 11 - 3 =$$

$$(13) \quad 10 - 4 =$$

$$(4) \quad 11 - 4 =$$

$$(14) \quad 6 - 2 =$$

$$(5) \quad 11 - 5 =$$

$$(15) \quad 10 - 3 =$$

$$(6) \quad 8 - 2 =$$

$$(16) \quad 8 - 4 =$$

$$(7) \quad 8 - 1 =$$

$$(17) \quad 5 - 3 =$$

$$(8) \quad 7 - 5 =$$

$$(18) \quad 9 - 5 =$$

$$(9) \quad 4 - 3 =$$

$$(19) \quad 5 - 2 =$$

$$(10) \quad 10 - 5 =$$

$$(20) \quad 6 - 4 =$$

Name

Date

■ Subtract the numbers below.

(1)  $10 - 1 =$

(11)  $12 - 3 =$

(2)  $11 - 1 =$

(12)  $15 - 2 =$

(3)  $19 - 5 =$

(13)  $14 - 4 =$

(4)  $17 - 2 =$

(14)  $13 - 4 =$

(5)  $17 - 5 =$

(15)  $16 - 1 =$

(6)  $14 - 1 =$

(16)  $15 - 3 =$

(7)  $7 - 3 =$

(17)  $13 - 2 =$

(8)  $19 - 4 =$

(18)  $20 - 5 =$

(9)  $14 - 2 =$

(19)  $16 - 5 =$

(10)  $18 - 4 =$

(20)  $18 - 3 =$

■ Subtract the numbers below.

$$(1) \quad 16 - 3 =$$

$$(11) \quad 13 - 3 =$$

$$(2) \quad 13 - 1 =$$

$$(12) \quad 16 - 2 =$$

$$(3) \quad 18 - 5 =$$

$$(13) \quad 15 - 4 =$$

$$(4) \quad 15 - 5 =$$

$$(14) \quad 12 - 2 =$$

$$(5) \quad 14 - 5 =$$

$$(15) \quad 11 - 2 =$$

$$(6) \quad 9 - 1 =$$

$$(16) \quad 10 - 2 =$$

$$(7) \quad 11 - 3 =$$

$$(17) \quad 12 - 4 =$$

$$(8) \quad 14 - 3 =$$

$$(18) \quad 17 - 4 =$$

$$(9) \quad 13 - 5 =$$

$$(19) \quad 12 - 1 =$$

$$(10) \quad 15 - 1 =$$

$$(20) \quad 16 - 4 =$$

Name \_\_\_\_\_

Date \_\_\_\_\_

■ Subtract the numbers below.

(1)  $11 - 1 =$

(11)  $15 - 5 =$

(2)  $17 - 4 =$

(12)  $12 - 2 =$

(3)  $13 - 3 =$

(13)  $18 - 3 =$

(4)  $19 - 5 =$

(14)  $20 - 1 =$

(5)  $18 - 1 =$

(15)  $14 - 3 =$

(6)  $17 - 2 =$

(16)  $16 - 2 =$

(7)  $19 - 2 =$

(17)  $18 - 5 =$

(8)  $14 - 4 =$

(18)  $20 - 3 =$

(9)  $20 - 4 =$

(19)  $16 - 5 =$

(10)  $19 - 4 =$

(20)  $15 - 1 =$

■ Subtract the numbers below.

$$(1) \quad 17 - 1 =$$

$$(11) \quad 19 - 3 =$$

$$(2) \quad 20 - 2 =$$

$$(12) \quad 14 - 1 =$$

$$(3) \quad 15 - 2 =$$

$$(13) \quad 17 - 5 =$$

$$(4) \quad 15 - 4 =$$

$$(14) \quad 13 - 2 =$$

$$(5) \quad 13 - 1 =$$

$$(15) \quad 18 - 2 =$$

$$(6) \quad 17 - 3 =$$

$$(16) \quad 16 - 3 =$$

$$(7) \quad 18 - 4 =$$

$$(17) \quad 14 - 2 =$$

$$(8) \quad 20 - 5 =$$

$$(18) \quad 12 - 1 =$$

$$(9) \quad 15 - 3 =$$

$$(19) \quad 16 - 4 =$$

$$(10) \quad 19 - 1 =$$

$$(20) \quad 16 - 1 =$$

Name \_\_\_\_\_

Date \_\_\_\_\_

■ Subtract the numbers below.

(1)  $6 - 1 =$

(11)  $14 - 2 =$

(2)  $10 - 4 =$

(12)  $10 - 2 =$

(3)  $8 - 3 =$

(13)  $7 - 1 =$

(4)  $11 - 4 =$

(14)  $11 - 5 =$

(5)  $10 - 5 =$

(15)  $11 - 2 =$

(6)  $12 - 1 =$

(16)  $16 - 4 =$

(7)  $16 - 5 =$

(17)  $9 - 3 =$

(8)  $14 - 3 =$

(18)  $13 - 1 =$

(9)  $13 - 3 =$

(19)  $17 - 5 =$

(10)  $7 - 2 =$

(20)  $14 - 4 =$

■ Subtract the numbers below.

$$(1) \quad 8 - 1 =$$

$$(11) \quad 10 - 1 =$$

$$(2) \quad 12 - 2 =$$

$$(12) \quad 15 - 4 =$$

$$(3) \quad 8 - 2 =$$

$$(13) \quad 9 - 1 =$$

$$(4) \quad 15 - 3 =$$

$$(14) \quad 12 - 4 =$$

$$(5) \quad 14 - 5 =$$

$$(15) \quad 13 - 2 =$$

$$(6) \quad 10 - 3 =$$

$$(16) \quad 12 - 5 =$$

$$(7) \quad 11 - 1 =$$

$$(17) \quad 11 - 3 =$$

$$(8) \quad 13 - 5 =$$

$$(18) \quad 15 - 5 =$$

$$(9) \quad 9 - 4 =$$

$$(19) \quad 9 - 2 =$$

$$(10) \quad 13 - 4 =$$

$$(20) \quad 12 - 3 =$$