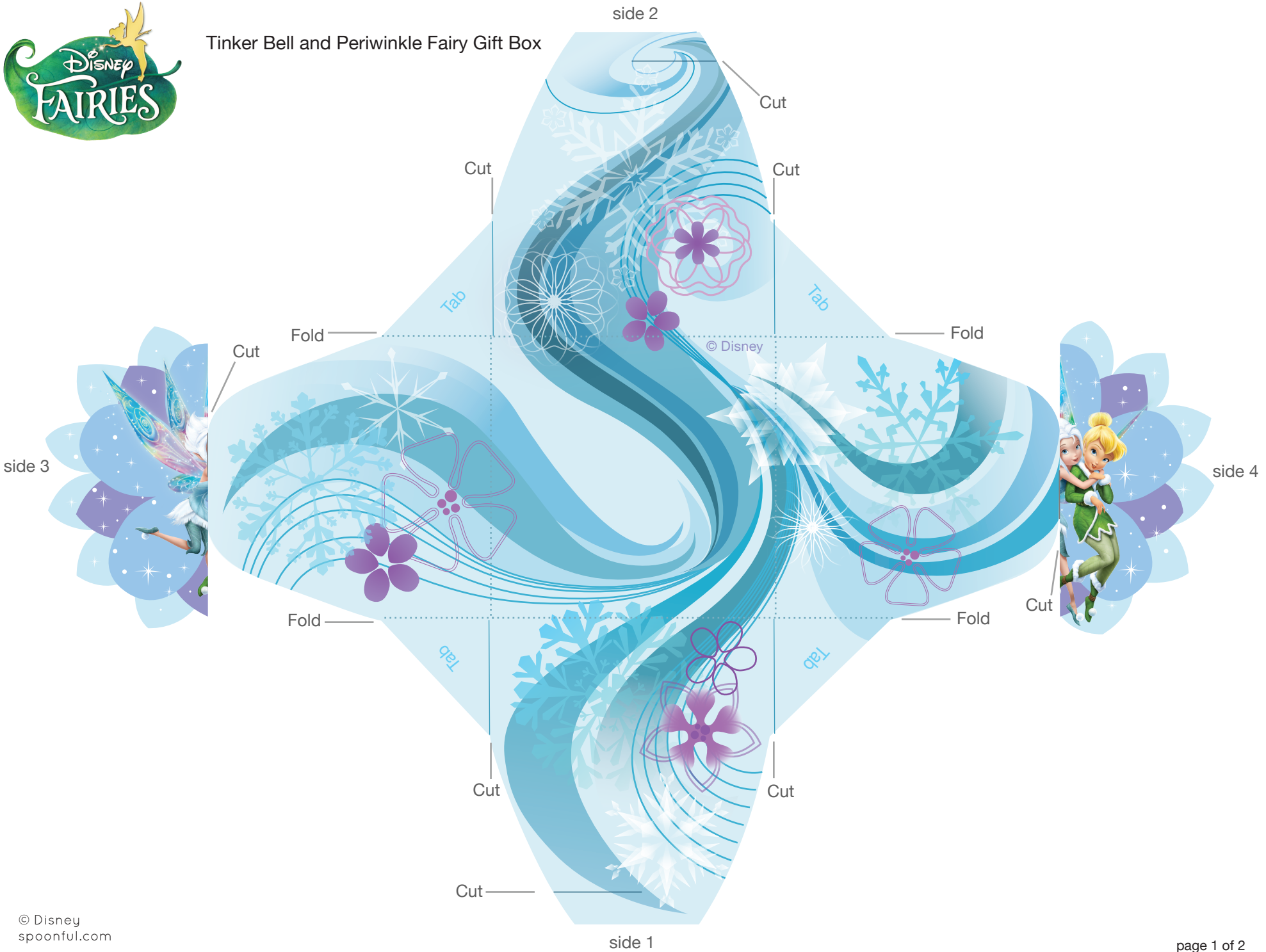




Tinker Bell and Periwinkle Fairy Gift Box





Tinker Bell and Periwinkle Fairy Gift Box

Instructions

1. Print the gift box on regular paper or cardstock and cut out the design. Cut along the solid black lines at the end of sides 1 and 2 and along the blue solid lines to the left and right of sides 1 and 2. Cut along the black solid lines on the inside of each snowflake half. Do not cut any further than the solid lines go.
2. Make folds along all dotted lines, then use glue or double-sided tape to secure the tabs to the back of their corresponding pieces. The box should begin to take shape.
3. To close the box, connect the two slits from sides 1 and 2, then connect the two slits from sides 3 and 4. The flower will adorn the top of the gift box.