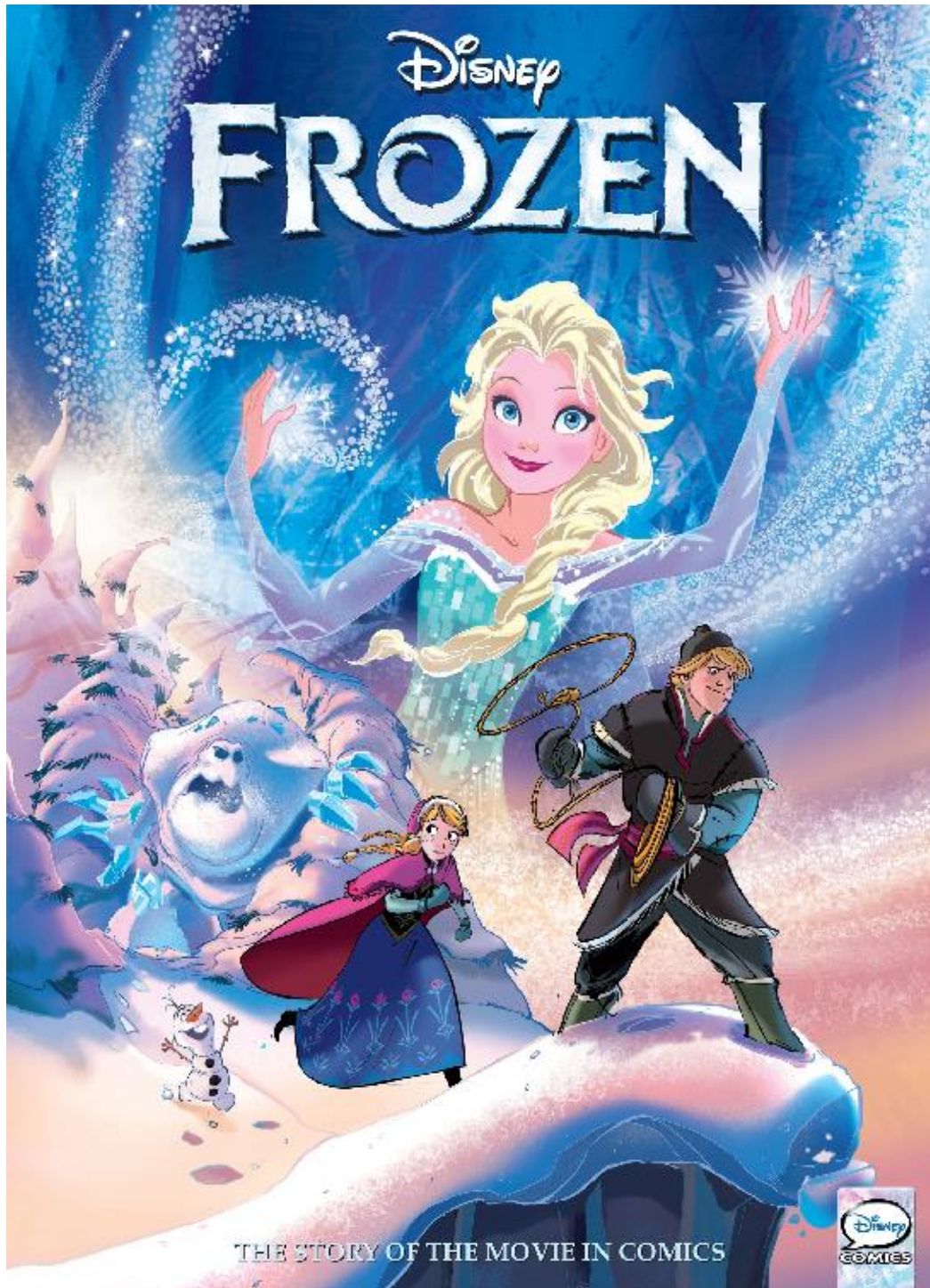


# Disney FROZEN



THE STORY OF THE MOVIE IN COMICS





Copyright © 2014 Disney Enterprises, Inc.

All rights reserved. Published by Disney Press, an imprint of Disney Book Group. No part of this book may be reproduced or transmitted in any form or by any means, electronic or mechanical, including photocopying, recording, or by any information storage and retrieval system without written permission from the publisher. For information address Disney Press, 1101 Flower Street, Glendale, California 91201.

ISBN 978-1-4847-2619-8

For more Disney Press fun, visit [www.disneybooks.com](http://www.disneybooks.com).



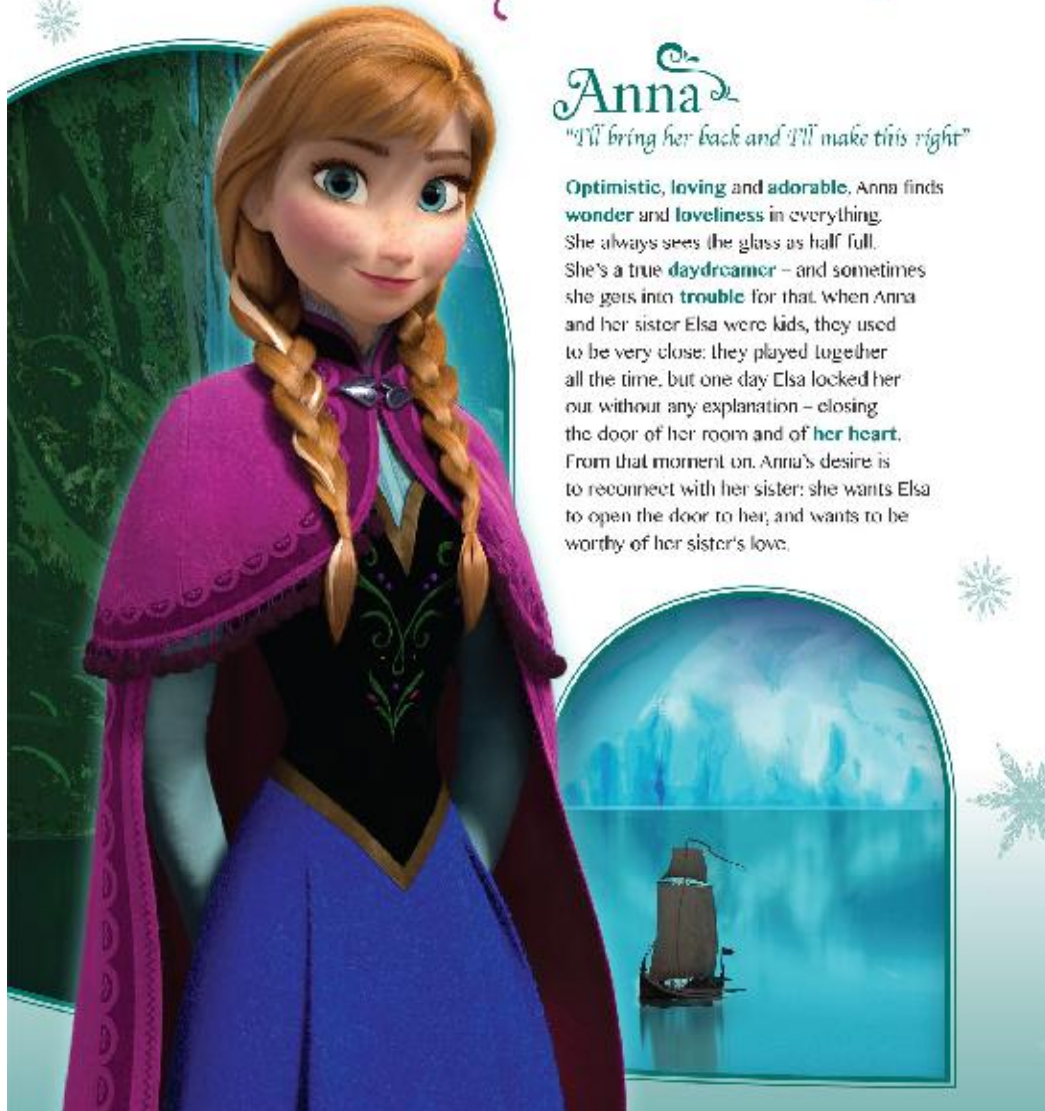


# Welcome to Arendelle

## Anna

*"I'll bring her back and I'll make this right"*

**Optimistic, loving and adorable**, Anna finds **wonder** and **loveliness** in everything. She always sees the glass as half full. She's a true **daydreamer** – and sometimes she gets into **trouble** for that. When Anna and her sister Elsa were kids, they used to be very close: they played together all the time, but one day Elsa locked her out without any explanation – closing the door of her room and of **her heart**. From that moment on, Anna's desire is to reconnect with her sister: she wants Elsa to open the door to her; and wants to be worthy of her sister's love.





# Elsa

"I never knew what I was capable of"

Elsa is the heir to the throne of Arendelle. She's a **natural leader**, she's **controlled**, **regal** and **graceful**; everybody in the kingdom loves her. But she has a **dark secret**, a secret she hides even from her sister Anna. Elsa has the **power** to **create ice** and **snow** with her hands, but she's not able to control it at all times. She needs to wear **gloves** most of the time, otherwise she'd **freeze anything she touches**. That's why she shut Anna out to protect Anna from her powers. She'll soon learn, though, how important it is to open your heart and let the ones that love you in.



## Kristoff

*"Doesn't sound like true love."*

Together with his reindeer – and **best friend** – Sven, Kristoff gets blocks of ice from the **North Mountain** and takes them to Arendelle on his sledge to sell. He spends a lot of time outside and he enjoys his work. Kristoff deeply believes that sooner or later **people always end up hurting** you, so he avoids getting close to anyone – even to the love of his life. Anna asks his help to meet up with her sister Elsa. Two people in the whole kingdom could not be more different...

## Sven

Sven and Kristoff have been **inseparable life companions** since they were little. This friendly reindeer is crazy for carrots, and would do anything for his human friend. Although he cannot speak, Kristoff speaks for the two of them, often putting words from his own conscience into the animal's mouth.







## Olaf

*"Some people are worth melting for"*

Olaf is the live version of the first snowman Elsa made when she was still a little girl.

**Trusting, curious and always excited about the world**, Olaf has a **big heart** and is always ready to help others no matter what. Due to his **magical nature**, Olaf can divide his body into pieces – each of them moving independently – and easily put himself back together. His **greatest dream** is to see **summer**; he has no idea that heat could melt him!

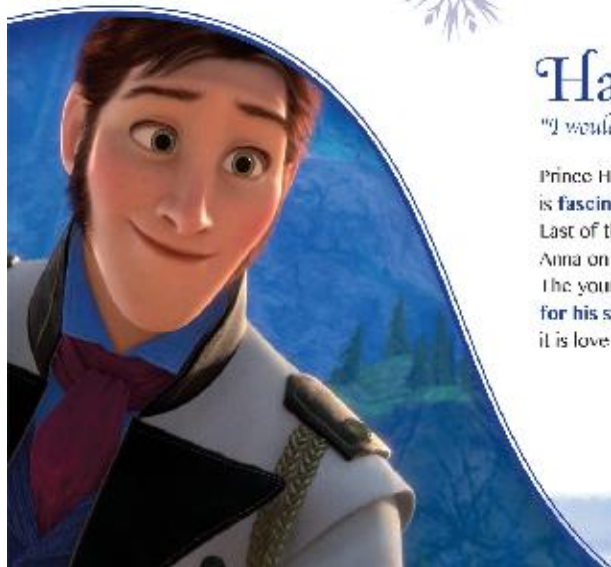




## Marshmallow

"Go away!"

Made by Elsa and prepared to defend her ice castle, Marshmallow is a huge snowman who is not very friendly towards unwanted visitors. His duty is to push away anyone who dares to get close to his creator. This is an easy task for him because of his strength, agility and his terrible ice claws.



## Hans

"I would never shut you out"

Prince Hans of the Southern Isles is fascinating, elegant and fun. Last of thirteen brothers, he meets Anna on the day of Elsa's coronation. The young princess immediately falls for his smile and his charming ways: it is love at first sight!







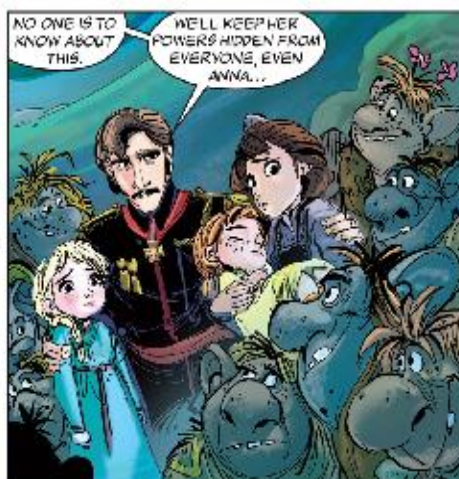






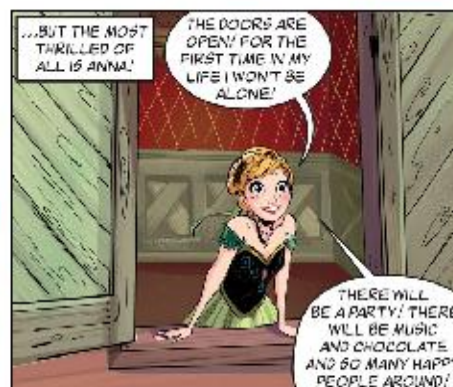










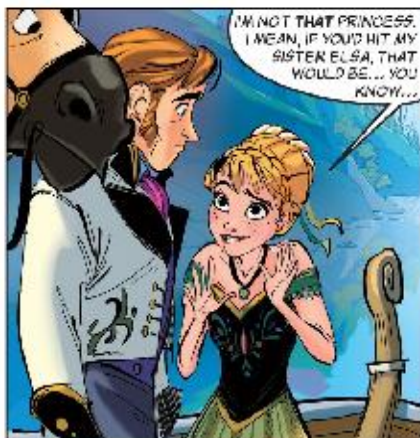












**SPLASH**





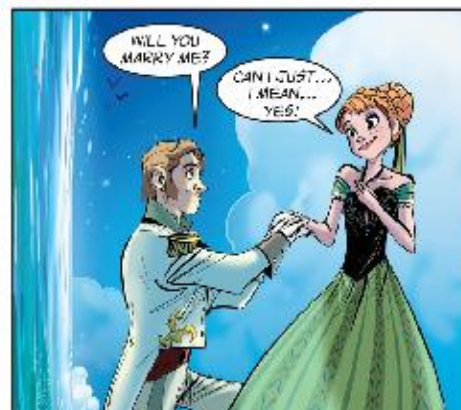






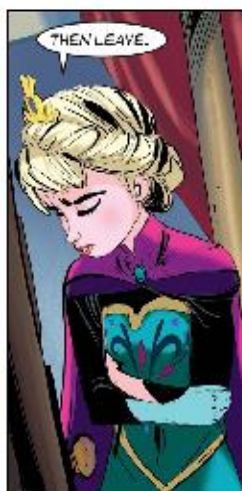
















BACK IN THE CASTLE  
COURTYARD...



ANNA DOESN'T KNOW THAT  
THIS NIGHT HAS CHANGED  
ELSA FOREVER.



ON TOP OF THE NORTH  
MOUNTAIN, THE QUEEN  
PLAYS WITH HER POWERS  
FOR THE FIRST TIME...



...SHE CHANGES...



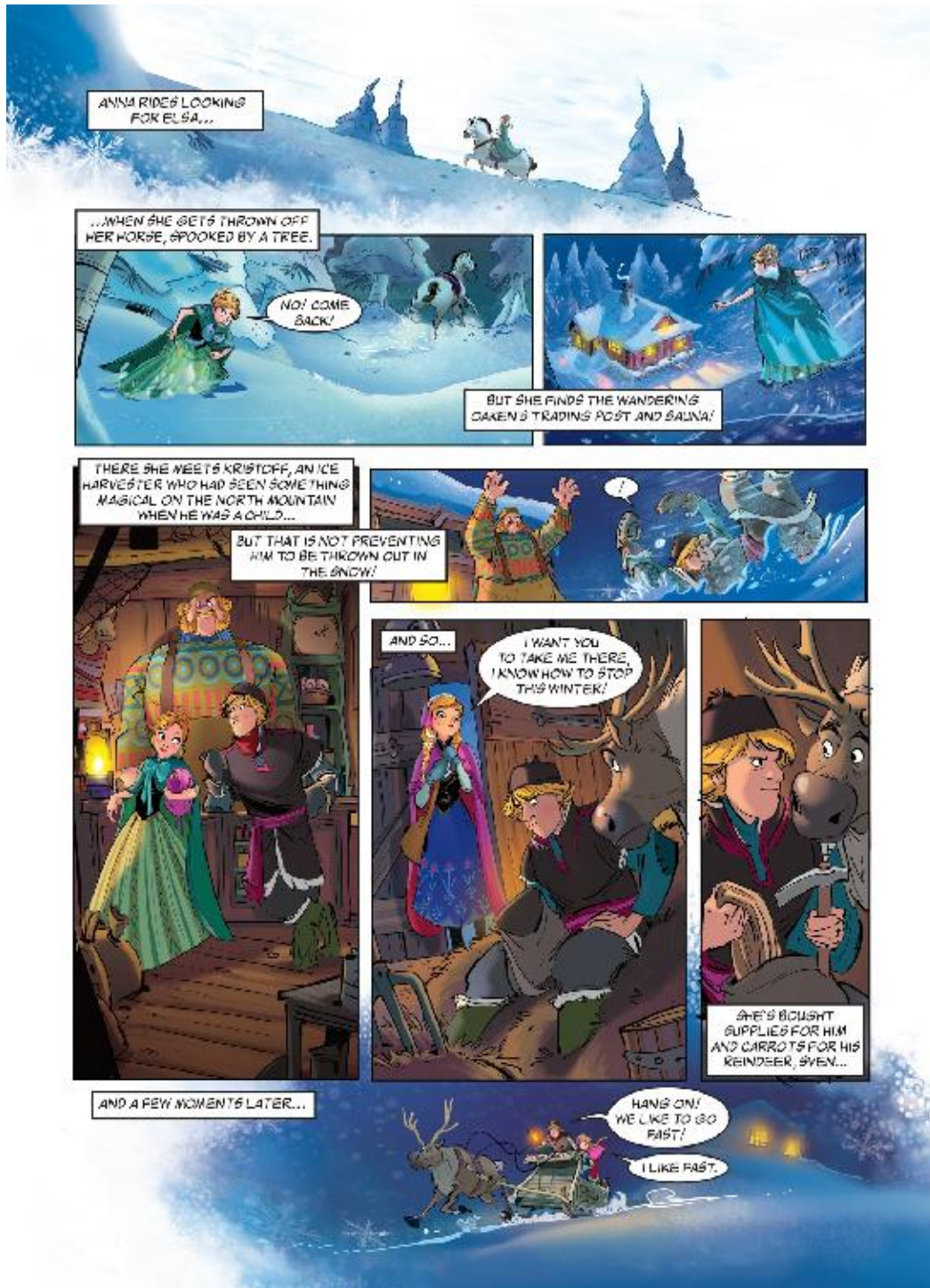
...FINALLY FREE TO  
BE HERSELF...



... LEAVING THE PAST  
BEHIND TO BUILD A  
FUTURE OF ICE!















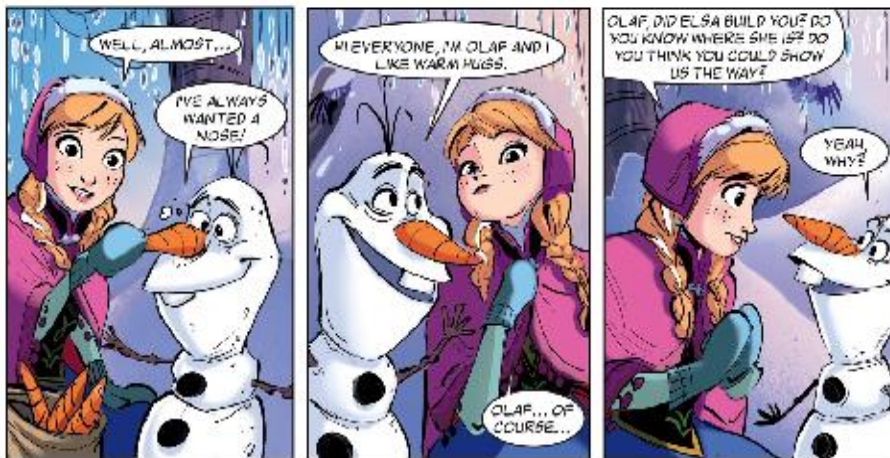






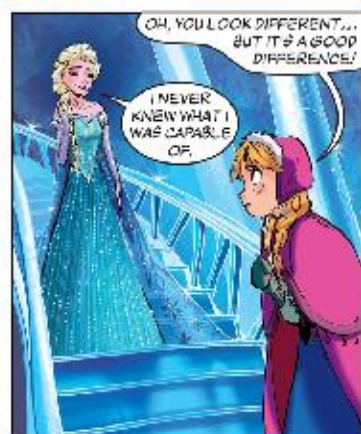
























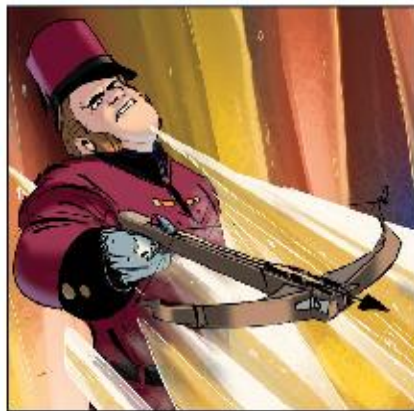


MEANWHILE, HANS AND THE DUKE'S MEN HAVE REACHED THE ICE PALACE. WHILE HANS FIGHTS MARSHMALLOW...



...THE DUKE'S MEN TRY TO KILL QUEEN ELSA!



































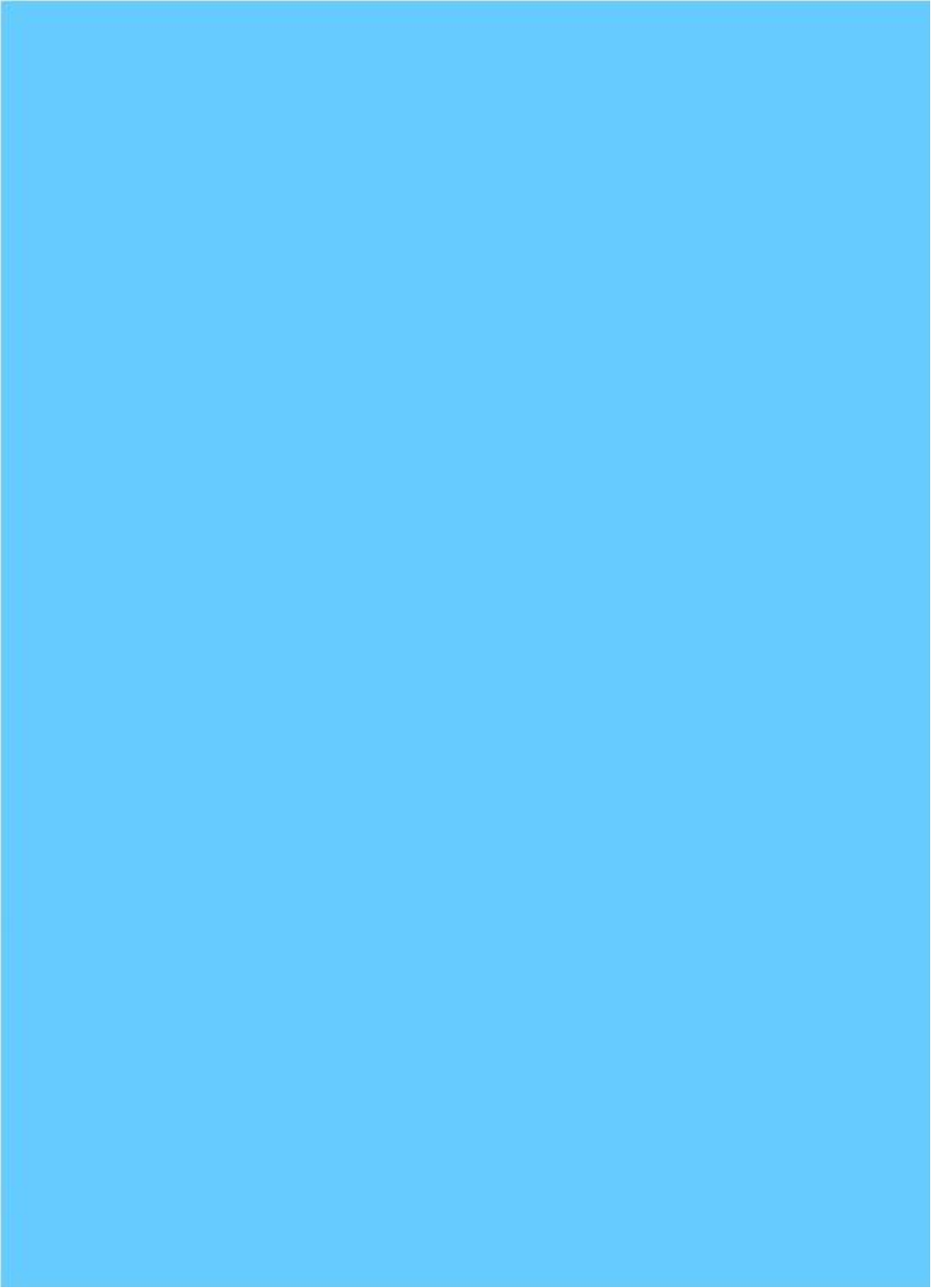
















## Credits

### Manuscript Adaptation

Alessandro Ferrari

### Art

Massimiliano Narciso

### Paint

Kawaii Creative Studio

### Design and Editing

Ito milano S.r.l., Absink

### Special Thanks to

Peter Del Vecchio, Mike Giaimo, Jessica Julius, Jasmine Gonzalez, Renato Iattanzi, Laura Hitchcock

### DISNEY PUBLISHING WORLDWIDE – Global Magazines, Comics and Partworks

#### Publisher

Gianfranco Cordara

#### Editorial Director

Guido Frazzini (Director, Comics)

#### Editorial Team

Bianca Coletti (Director, Magazines), Stefano Ambrosio (Executive Editor, New IP), Carlotta Quattrocchio (Executive Editor, Franchise), Roberta Zilio (Senior Editor), Behnoosh Khalili (Editor)

Copyright © 2013 Disney Enterprises, Inc. All rights reserved.

### Design

Enrico Soave (Senior Designer)

### Art

Ken Shue (VP, Global Art), Roberto Santillo (Creative Director), Marco Ghiglione (Creative Manager), Maria Elena Naggi (Creative Manager), Jeffrey Clark (Assistant Manager, Creative), Davide Cesarello (Senior Artist), Stefano Attardi (Computer Art Designer)

### Portfolio Management

Olivia Ciancarelli (Director)

### Business & Marketing

Camilla Vedove (Managing Editor), Mariantonietta Galla (Marketing Manager), Virpi Korhonen (Editorial Manager), Kristen Ginter (Publishing Manager)

### Contributors

Valentina Cambi, Carlo Resca