

THE MAGAZINE FOR YOUNG EXPLORERS

LOOK INSIDE:
ANIMAL CARDS!



NATIONAL
GEOGRAPHIC



Littlekids



White Whales

January / February 2017
natgeolittlekids.com

Why?

Why do you think martens sleep under snow?



Martens dig a tunnel from the top of the snow down to the ground. They snooze on the soil, where heat from the ground keeps them warm.

SORTING

What Is Different?

Look at each picture in the top row.
Find the differences between it and the one below.



Find one
difference.

Find two
differences.

Find three
differences.

That's Cool!

Meet the
red-eyed tree frog.

Red-eyed
tree frogs live
in trees in the
rain forest.

Suction cups
on the frog's
feet help it stick
to leaves and
branches.

These frogs
are about as
long as your
pointing
finger.



FOOT



NAMING

What in the World Are These?



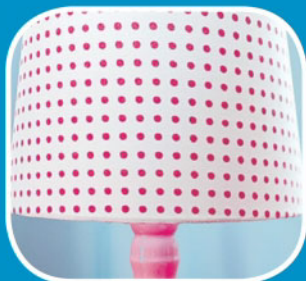
_HAIR



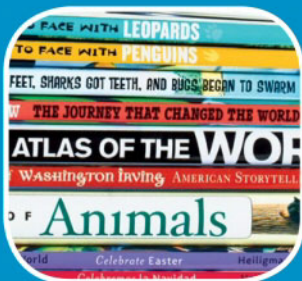
_RESSER



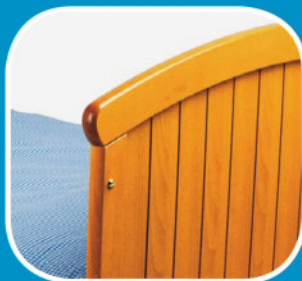
_LANKET



_AMP



_OOKS



_ED



_TUFFED ANIMAL



_INDOW



_ILLOW

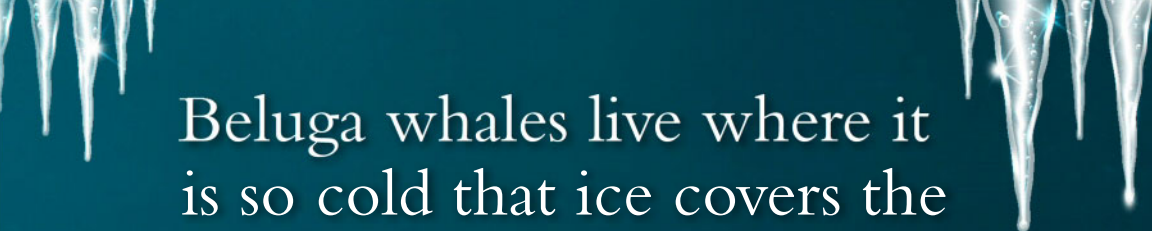
WHAT TOYS ARE IN YOUR BEDROOM?

ANIMALS


WHALES

in the Frozen Sea





Beluga whales live where it is so cold that ice covers the ocean. A thick layer of fat keeps belugas warm in the icy water.



Belugas swim to the surface to breathe air. When the sea is frozen, a beluga must find a hole in the ice to get to the surface.



A whale breathes through an opening on its head called a blowhole.

Adult belugas are snowy white from head to tail. Baby belugas are gray. They swim close to their mothers.



Beluga whales are also called white whales.



Belugas make sounds as they hunt and play. They chirp, tweet, and even moo!

Beluga
whales eat fish,
crabs, and
sandworms.



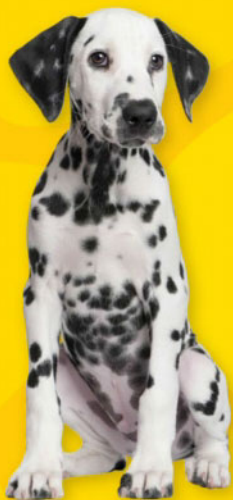
Belugas use their squishy faces and big lips to “talk” without words. It’s like how you smile or frown to show your feelings.



FINDING

STRIPES AND

Point to all the striped animals. How many did you find? Four animals have spots. Can you find them all?



DOG



ANGELFISH



DEER



LADYBUG



Which two animals live in water?

SPOTS



CATERPILLAR



TIGER



PUFFERFISH



ZEBRA



SNAKE

ANIMALS

SNEAKY PRAYING MANTIS

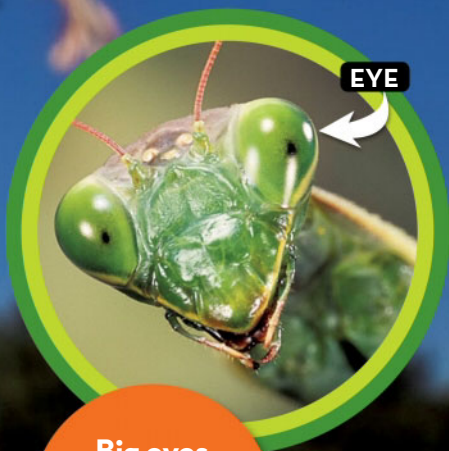
Is it a leaf? A stick? No, it is a praying mantis.

Spines on the long front legs help it grab and hold food.

SPINES



This insect eats flies, grasshoppers, spiders, and other bugs. To catch its food, the praying mantis pretends to be a plant.



**Big eyes
help a praying
mantis see
movement.**

**Praying
mantises help
people by eating
insects that
destroy our
garden plants.**

First, the praying mantis holds its legs and body just right, so that it looks like part of the plant. Then it stays still and waits.

Unlike other insects, a praying mantis can turn its head from side to side.



When a bug gets close enough, the praying mantis snatches it. Time for lunch. *Crunch.*

OTHER PRAYING MANTISES



HOODED MANTIS



GHOST MANTIS

There are over 2,000 kinds of praying mantises. Here are a few.

ORCHID MANTIS



DEVIL'S FLOWER MANTIS



SORTING

FUN SHAPES IN

Trace each shape with your finger. Draw a line with your finger from each shape to the same shape found in nature.

Circle

LEAF



SEA STAR



Spiral



NATURE

Oval

Heart

SNAIL

MOON

Star

BIRD EGGS

What shapes do you see where you are right now?

AN ORANGUTAN



1

Orangutans sleep in nests high in trees. An orangutan builds a new nest every day.

2

The orangutan uses its hands to bend, twist, and weave the leafy branches into a nest.



BUILDS A NEST



3

When the nest is strong, the orangutan piles leaves on top to make it soft.



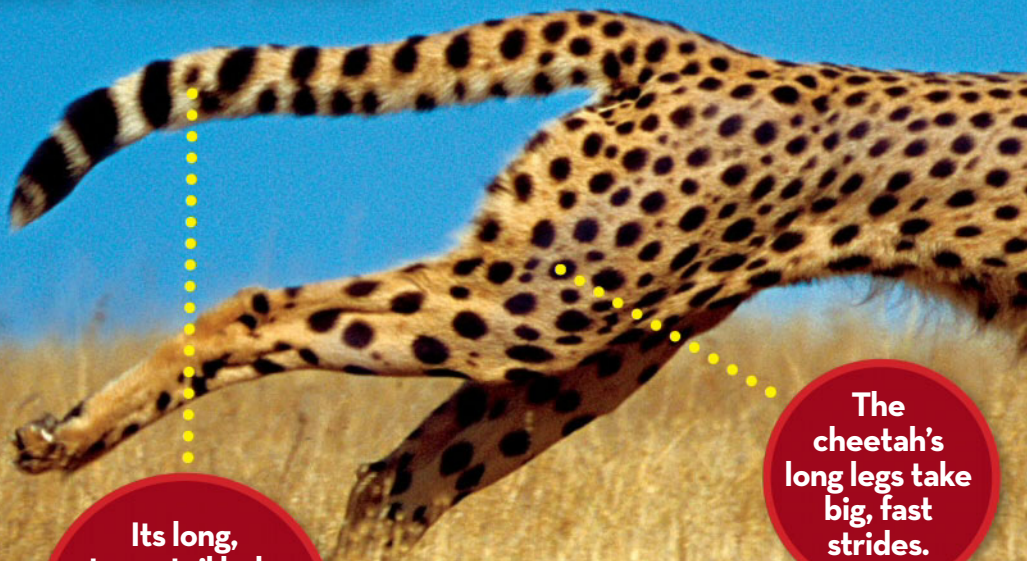
4

Now the bed is ready. The baby orangutan climbs in to sleep with Mom.



CHEETAH!

Cheetahs hunt and eat gazelles, impalas, birds, and hares. Here are a few things that help cheetahs chase and catch food.



Its long, strong tail helps the cheetah stay balanced as it makes quick turns.

The cheetah's long legs take big, fast strides.

Cheetahs usually hunt in the daytime.

Spotted fur helps a cheetah blend in with tall grass as it waits for its food to come closer.

Cheetahs are the fastest animals on land. They can run as fast as a car can drive on a highway.

Its eyes can see movement from far away.

Large nostrils take in lots of air as it runs.



CLAWS

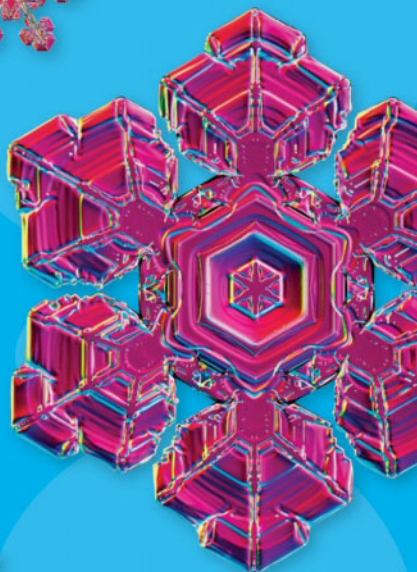
Strong claws grip the ground as it runs, like spikes on the bottom of baseball shoes.

The cheetah trips its food with its front paws.

MATCHING

MATCH THE SNOWFLAKES

Draw a line with your finger from each big snowflake to the smaller snowflake it looks like.



How many snowflakes do you count?



KENNETH LIBRECHT / SCIENCE SOURCE (PURPLE-RED SNOWFLAKE, ORANGE-RED SNOWFLAKE, MULTICOLORED SPIKY SNOWFLAKE, 12-POINT SNOWFLAKE), KICHIGIN / SHUTTERSTOCK (SPIKY WHITE SNOWFLAKE), DESIGN PICS INC / NATIONAL GEOGRAPHIC CREATIVE (YELLOW-WHITE SNOWFLAKE), ANDREY NERASOV / ALAMY (COVER)

NATIONAL GEOGRAPHIC KIDS

Executive Vice President, Kids and Family

Melina Gerosa Bellows

Vice President, Content

Jennifer Emmett

Editor-in-Chief and Vice President,

Kids Magazines & Digital

Rachel Buchholz

Executive Editor

Marfé Ferguson Delano

Vice President, Visual Identity

Eva Absher-Schantz

Design Director, Magazines

Eileen O'Tousa-Crowson

Editorial

Ruth A. Musgrave, Contributing Writer;

Rose Davidson, Assistant Editor

Photo

Shannon Hibberd, Senior Photo Editor;

Hilary Andrews, Associate Photo Editor

Art

Dawn McFadin, Contributing Designer

Production

Sean Philpotts, Director

Digital

Laura Goertzel, Director;

Natalie Jones, Senior Product Manager;

Tirzah Weiskotten, Video Manager

International Magazine Publishing

Yulia Petrossian Boyle, Senior Vice President;

Jennifer Jones, Business Manager;

Rossana Stella, Editorial Manager

Manufacturing

Phillip L. Schlosser, Senior Vice President,

Production Services; Gregory Storer, Director;

Rebekah Cain, Imaging

Finance

Margaret Schmidt, Vice President, Business and

Finance; Jeannette Swain, Senior Budget Manager;

Tammi Colley, Rights Manager;

Pinar Taskin, Contracts Manager;

Kurt Massé, Rights Clearance Specialist

Consumer and Member Marketing

Elizabeth Safford, Senior Vice President;

John MacKethan, Vice President,

Retail Sales and Special Editions;

Mark Viola, Circulation Director;

Richard J. Brown, New Business Director

Market Services

Tracy Hamilton Stone, Research Manager

Publicity

Caitlin Holbrook, Publicist (202) 857-5882

PUBLISHED BY

NATIONAL GEOGRAPHIC PARTNERS, LLC

Chief Executive Officer

Declan Moore

Chairman of the Board of Directors

Gary E. Knell

Editorial Director

Susan Goldberg

NATIONAL GEOGRAPHIC LITTLE KIDS,

Issue 60, January / February 2017

(ISSN 1034-8363), is published bimonthly by

National Geographic Partners, LLC, 1145 17th Street NW,

Washington, DC 20035-4688.

POSTMASTER: Please send address changes to

NATIONAL GEOGRAPHIC LITTLE KIDS, P.O. Box 62136, Tampa, FL

33662-2136. If the Postal Service alerts NGP that your magazine is

undeliverable, NGP has no further obligation unless it receives

a corrected address within two years.

SUBSCRIPTIONS: United States \$18; Canada \$24.95;

elsewhere, \$28, all U.S. funds. In Canada, Agreement number

40063649; return undeliverable Canadian addresses to

NATIONAL GEOGRAPHIC LITTLE KIDS,

P.O. Box 4412 STA A, Toronto, Ontario M5W 3W2.

Parents:

Follow us on Twitter @NGKids

and like us on Facebook.



PRINTED ON 100% PEFC-CERTIFIED PAPER—
PEFC/29-31:58—Please recycle.

WILD CARDS



FISHER

fisher

FUN FACTS

**Fishers are in the weasel family.
They live in the woods and are
very good at climbing trees.**



© LISA AND MIKE HUSAR / TEAM HUSAR

WILD CARDS



NATIONAL
GEOGRAPHIC
Littlekids

AMERICAN TOAD

American toad

FUN FACTS

An American toad is a bit smaller than this card. Where winters are cold, the toad burrows underground and sleeps until spring.



© NIAL BENVIE / NATURE PICTURE LIBRARY

WILD CARDS



NATIONAL
GEOGRAPHIC
Littlekids

HERMIT CRAB

hermit crab

FUN FACTS

This kind of hermit crab lives in the sea. It lives inside holes in hard coral on the ocean floor.



© CHRIS NEWBERT / MINDEN PICTURES

WILD CARDS



YELLOW-RUMPED WARBLER

yellow-rumped warbler

FUN FACTS

This colorful little bird can catch insects in midair using its beak. It also eats berries.



© TOM & PAT LEESON / KIMBALLSTOCK

WILD CARDS



SOUTH AMERICAN GRAY FOX

South American gray fox

FUN FACTS

Both the mother and father gray fox help take care of their babies. By the time a young fox is a year old, it can take care of itself.



© FREYA PRATT / NATURE PICTURE LIBRARY

WILD CARDS



NATIONAL
GEOGRAPHIC
Littlekids

BISON

bison

FUN FACTS

A bison, often called a buffalo, is the heaviest land animal in the United States. It is related to cows and sheep.



OBSERVATION

Critter Corner

What do you think this bear is doing?



A. eating a fish B. sitting on ice C. cleaning its room

Answer: B

SUBSCRIBE TO NATIONAL GEOGRAPHIC LITTLE KIDS!

CALL TOLL FREE: 1 (800) 647-5463 TDD: 1 (800) 548-9797

Monday-Friday: 8 a.m.- Midnight ET, Saturday: 8:30 a.m.-7 p.m. ET

natgeo.com/littlekids/subscribe

DESIGN PICS INC. / NATIONAL GEOGRAPHIC CREATIVE