

THE MAGAZINE FOR YOUNG EXPLORERS

LOOK INSIDE:
ANIMAL CARDS!

 NATIONAL
GEOGRAPHIC

Little Kids



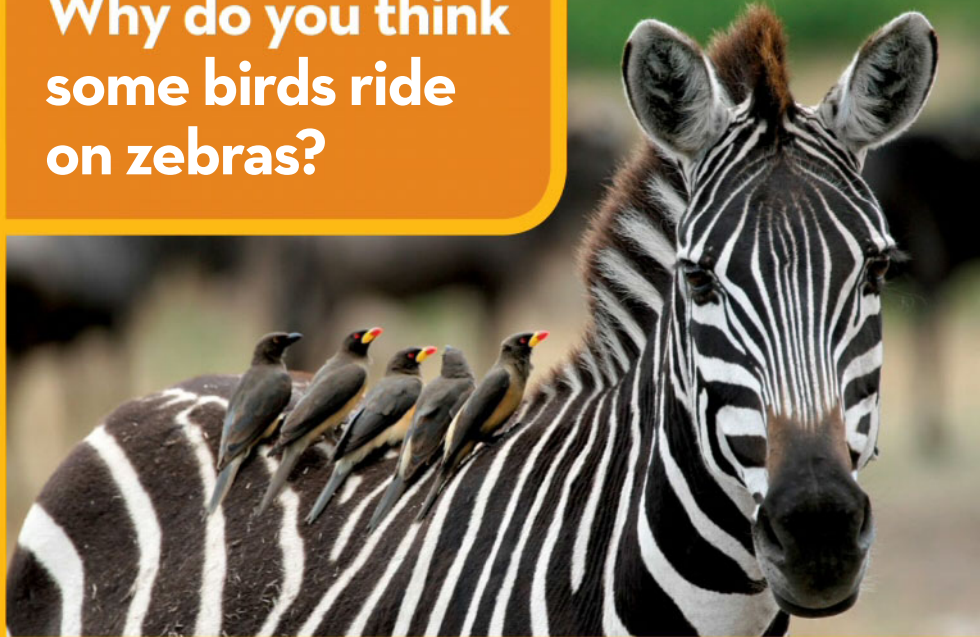
A Penguin Grows Up



November / December 2016 natgeolittlekids.com

Why?

**Why do you think
some birds ride
on zebras?**



Flies, ticks, and other small bugs live on zebras. Birds ride on the zebras to eat these bugs. The birds get food, and the zebras get clean hair.

SORTING

What Is Different?

Look at each picture in the top row.
Find the differences between it and the one below.



Find one
difference.

Find two
differences.

Find three
differences.

That's Cool!

Meet the gibbon.



HAND

Gibbons use their strong long arms and hands to swing from branch to branch.

They live in trees.

Gibbons eat fruit, leaves, and eggs.



NAMING

What in the World Are These?



_EANS



_ROG



_LOWER



_IBBON



_LUEBERRIES



_RAYON



_UTTERFLY



_WEATER



_IRD

NAME SOME OTHER THINGS THAT ARE **BLUE**.

TOP ROW (LEFT TO RIGHT): PETER DAZELEV / GETTY IMAGES, © DAVE ZUBRASKI / ALAMY, MIDDLE ROW (LEFT TO RIGHT): PHOTODISC / SPORTING GOODS, BLUEYES / SHUTTERSTOCK, © GABE PALMER / ALAMY, BOTTOM ROW (LEFT TO RIGHT): © STEPHEN DALTON / MINDEN PICTURES, IN/SSA SKY TONNESSEN / SHUTTERSTOCK, © KONRAD WOTHE / MINDEN PICTURES.

ANIMALS



A Penguin Grows Up

6 NOVEMBER / DECEMBER 2016

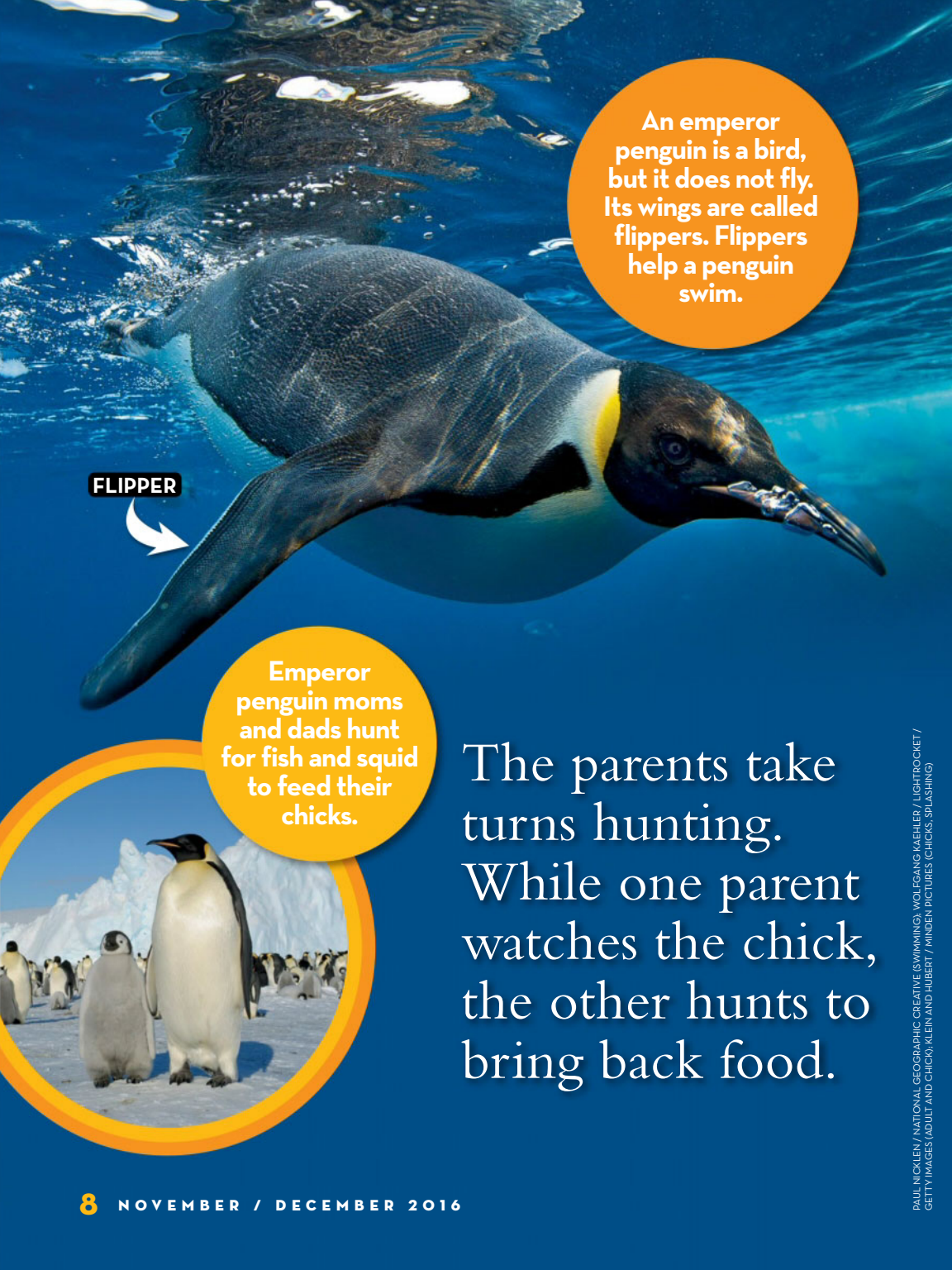
Baby emperor penguins grow up on ice. A baby penguin is called a chick.

Penguin chicks stay warm and safe on top of Dad's feet. His feathers are like a blanket.

An adult emperor penguin is probably taller than you!

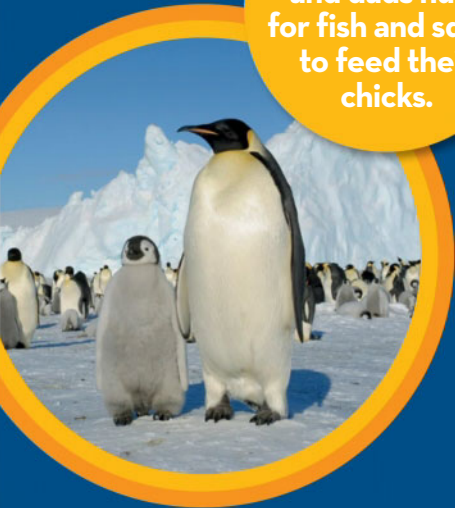


MINT IMAGES / FRANS LANTING / GETTY IMAGES (FAMILY), SYLVAIN CORDIER / GETTY IMAGES (PARENT AND CHICK)

A large emperor penguin is shown swimming underwater in clear blue water. The penguin's body is dark grey with a white patch on its neck and a yellow stripe on its head. Its long, dark flipper is extended forward. Bubbles are visible around the penguin's head and body.

An emperor penguin is a bird, but it does not fly. Its wings are called flippers. Flippers help a penguin swim.

FLIPPER

A white curved arrow points from the word 'FLIPPER' to the penguin's wing.A circular inset image shows an adult emperor penguin and its chick standing on a snowy, icy landscape. The adult is tall and dark with a white belly, while the chick is smaller and fluffier. Other penguins are visible in the background.

Emperor penguin moms and dads hunt for fish and squid to feed their chicks.

The parents take turns hunting. While one parent watches the chick, the other hunts to bring back food.

When the chick is big enough, both parents leave to hunt. Sometimes it cuddles with other chicks to stay warm.



Soon the penguin chick grows new feathers. The young penguin is ready to take its first swim to catch its own fish.



TALL AND SMALL

Point to each animal on these pages.
Say out loud if you think it is tall or small.

Find all
the spots
and stripes
on these
animals.



HUMMINGBIRD



DOG



KITTEN

Now
find all the
wings.

What do you
see in the
place where
you are that is
tall or small?



GIRAFFE

OSTRICH

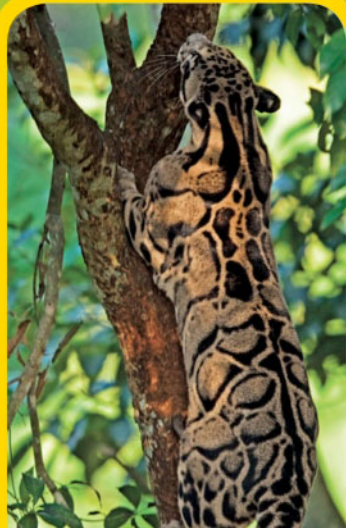
BEETLE

ANIMALS

CLOUDED LEOPARDS IN TREES

The clouded leopard is a good climber. These wild cats live in the forest and spend time in trees.

Strong legs help the clouded leopard run up, down, and across tree branches.





Clouded
leopards
are good
swimmers.

Some of this
cat's teeth are
as long as your
pinky finger.



Clouded leopards got their name because their spots are shaped like clouds.

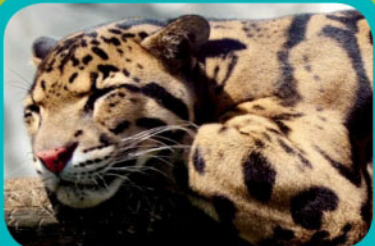
PAW

The leopard has big paws to hold on to the tree as it hunts.

Its long, thick tail helps the clouded leopard keep its balance.



TAIL



After all that climbing, it is time for a catnap.

CLOUDED

LEOPARD

RELATIVES

Meet some
other wild cats
with spots.



JAGUAR



CHEETAH



SERVAL

FINDING

HIDDEN BIRDS

These birds flock together in trees. How many birds can you find?

What kinds of birds live near you?



FIND
MORE
FREE
MAGAZINES

[HTTP://SOEK.IN](http://soek.in)

How many white birds can you find?

How many red birds can you find?

**The red birds
are called
scarlet ibises.**

**The white
birds are
called egrets.**

A CHAMELEON



A chameleon is a kind of lizard. It watches and waits for insects to eat.

2

Here comes an insect! The chameleon's long tongue shoots out very fast. The tip of the tongue is sticky. The insect sticks to the tongue.



CATCHES A BUG

3

The chameleon quickly snaps its tongue back inside its mouth. The chameleon swallows the insect whole. Yum!



JUPITER

Jupiter is our solar system's biggest planet. It is so big that all the other planets in the solar system could fit inside it.



A huge storm on Jupiter is called the Great Red Spot. The storm is like a hurricane on Earth, but Jupiter's storm has been blowing for hundreds of years!

It takes
almost 12
Earth years
for Jupiter
to completely
orbit the sun.

Jupiter has at
least 63 moons.
Can you find 4
moons here?

The Great
Red Spot
is wider than
three Earths.

FROM THE
PAGES OF



READING

SNOWY SEASON

Say the name of each picture out loud. Find all the pictures that start with the letter s.



SHOVEL



COOKIE



SNOWMAN



HOT CHOCOLATE



HAT



SNOWFLAKE

SEAL





REINDEER



SCARF



MITTENS

SWEATER



SLED

TIMMARTY / SHUTTERSTOCK (SLED), SIMONE WINKLER / DREAMSTIME (REINDEER), ZOOM ZOOM / DREAMSTIME (SCARF), RUTH BLACK / DREAMSTIME (COOKIE), TERRACESTUDIO / SHUTTERSTOCK (HAT), CHRISTOPHER ELWEL / SHUTTERSTOCK (SNOWMAN), CUPIDRY / SHUTTERSTOCK (HOT CHOCOLATE), SUI LO / DREAMSTIME (SWEATER), VINCENT GIORDANO / DREAMSTIME (MITTENS), KICHIGIN / SHUTTERSTOCK (SNOWFLAKE), DANITA DELMONT / GETTY IMAGES (SEAL), FRANS LANTING / ROBERT HARDING PICTURE LIBRARY (COVER)

NATIONAL GEOGRAPHIC KIDS

Editorial Director, Kids and Family
Melina Gerosa Bellows

Vice President, Content
Jennifer Emmett

Editor-in-Chief and Vice President, Kids Magazines & Digital
Rachel Buchholz

Executive Editor
Marfé Ferguson Delano

Vice President, Visual Identity
Eva Absher-Schantz

Design Director, Magazines
Eileen O'Tousa-Crowson

Editorial Ruth A. Musgrave, *Contributing Writer*,
Rose Davidson, *Assistant Editor*

Photo Shannon Hibberd, *Senior Photo Editor*,
Hilary Andrews, *Associate Photo Editor*

Art Dawn McFadin, *Contributing Designer*

Production Sean Philpotts, *Director*

Digital Laura Goertzel, *Director*,
Natalie Jones, *Senior Product Manager*,
Tirzah Weiskotten, *Video Manager*

International Magazine Publishing

Yulia Petrossian Boyle, *Senior Vice President*,
Jennifer Jones, *Business Manager*,
Rossana Stella, *Editorial Manager*

Manufacturing

Phillip L. Schlosser, *Senior Vice President*,
Production Services; Gregory Storer, *Director*,
Rebekah Cain, *Imaging*

Finance Margaret Schmidt, *Vice President, Business and Finance*,
Jeannette Swain, *Senior Budget Manager*,
Allison Bradshaw, *Business Specialist*,
Tammi Colleary, *Rights Manager*,
Pinar Taskin, *Contracts Manager*,
Kurt Massé, *Rights Clearance Specialist*

Consumer and Member Marketing

Elizabeth Safford, *Senior Vice President*,
John MacKethan, *Vice President*,
Retail Sales and Special Editions,
Mark Viola, *Circulation Director*,
Richard J. Brown, *New Business Director*

Market Services

Tracy Hamilton Stone, *Research Manager*

Publicity

Anna Irwin, *Communications Director*,
Caitlin Holbrook, *Publicist* (202) 857-5882

PUBLISHED BY

NATIONAL GEOGRAPHIC PARTNERS, LLC

Chief Executive Officer Declan Moore

Chairman of the Board of Directors Gary E. Kneel

Editorial Director Susan Goldberg

NATIONAL GEOGRAPHIC LITTLE KIDS,

Issue 59, November / December 2016

(ISSN 1034-8363), is published bimonthly by
National Geographic Partners, LLC, 1145 17th Street NW,
Washington, DC 20035-4688.

POSTMASTER: Please send address changes to
NATIONAL GEOGRAPHIC LITTLE KIDS, P.O. Box 62126, Tampa, FL
33662-2126. If the Postal Service alerts NGP that your magazine is
undeliverable, NGP has no further obligation unless it receives
a corrected address within two years.

SUBSCRIPTIONS: United States: \$18; Canada: \$24.95;
elsewhere, \$28, all U.S. funds. In Canada, Agreement number
40063449, return undeliverable Canadian addresses to
NATIONAL GEOGRAPHIC LITTLE KIDS,
P.O. Box 4412 STA A, Toronto, Ontario M5W 3W2.

Parents:

Follow us on Twitter @NGKids
and like us on Facebook.



PRINTED ON 100% PEFC-CERTIFIED PAPER—
PEFC/29-31-58—Please recycle.



FISHING CAT

fishing cat

FUN FACTS

The fishing cat can dive and swim underwater to catch fish to eat for its dinner. It lives in wetlands.



© ANDY ROUSE / NHPA / PHOTOSHOT

WILD CARDS



NATIONAL
GEOGRAPHIC
Littlekids

PORCUPINE

porcupine

FUN FACTS

A porcupine has about 30,000 sharp quills covering most of its body. The quills help protect the porcupine from enemies.



WILD CARDS



NATTERJACK TOAD

natterjack toad

FUN FACTS

These European toads usually run instead of hop. Natterjack toads hibernate from October until March, resting through winter.



© SOLVIN ZANKL / NATURE PICTURE LIBRARY

WILD CARDS



RINGTAILS

ringtails

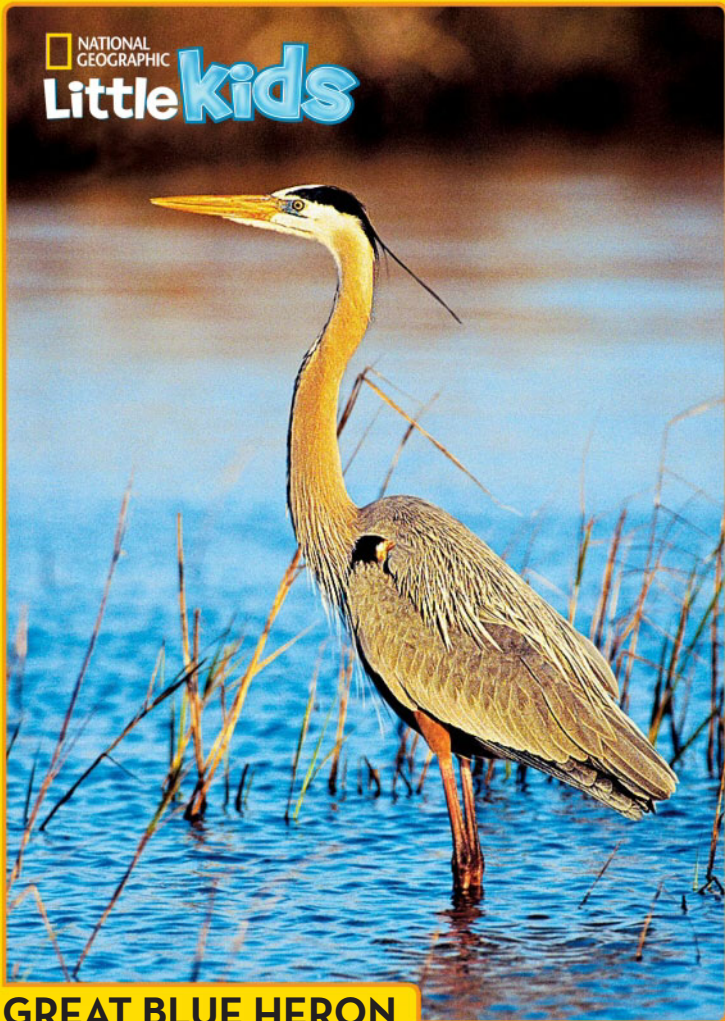
FUN FACTS

These animals are relatives of raccoons. Ringtails are good at climbing trees. They can even come down the trunk headfirst.



© KEVIN SCHAFER / NHPA / PHOTOSHOT

NATIONAL
GEOGRAPHIC
Little kids



GREAT BLUE HERON

great blue heron

FUN FACTS

This big bird is taller than most three-year-old kids. The distance from wing tip to wing tip is longer than many human dads are tall.



© LISA HUSAR / TEAM HUSAR

WILD CARDS



CUTTLEFISH

cuttlefish

FUN FACTS

Cuttlefish are related to octopuses and squid. They have three hearts and blue-green blood.



© CHRIS NEWBERT / MINDEN PICTURES

OBSERVATION

Hide-and-Seek

Can you find the two musk oxen
sleeping in this picture?



SUBSCRIBE TO NATIONAL GEOGRAPHIC LITTLE KIDS!

CALL TOLL FREE: 1 (800) 647-5463 (TDD: 1 (800) 548-9797)

Monday-Friday: 8 a.m.- Midnight ET, Saturday: 8:30 a.m.-7 p.m. ET

natgeo.com/littlekids/subscribe

© ORSOLVA HAARBERG / NATURE PICTURE LIBRARY