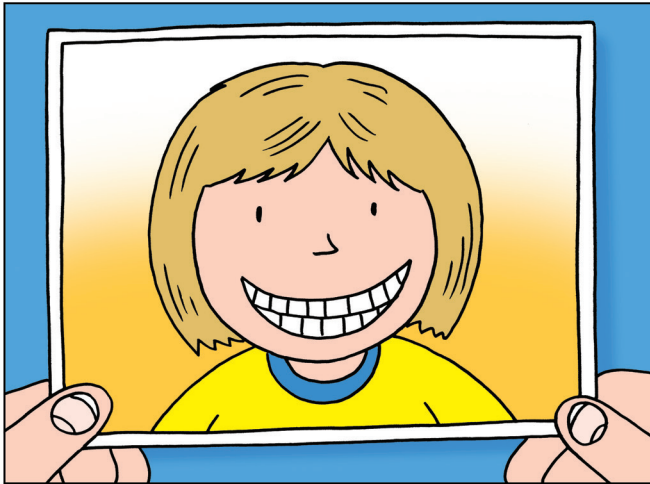


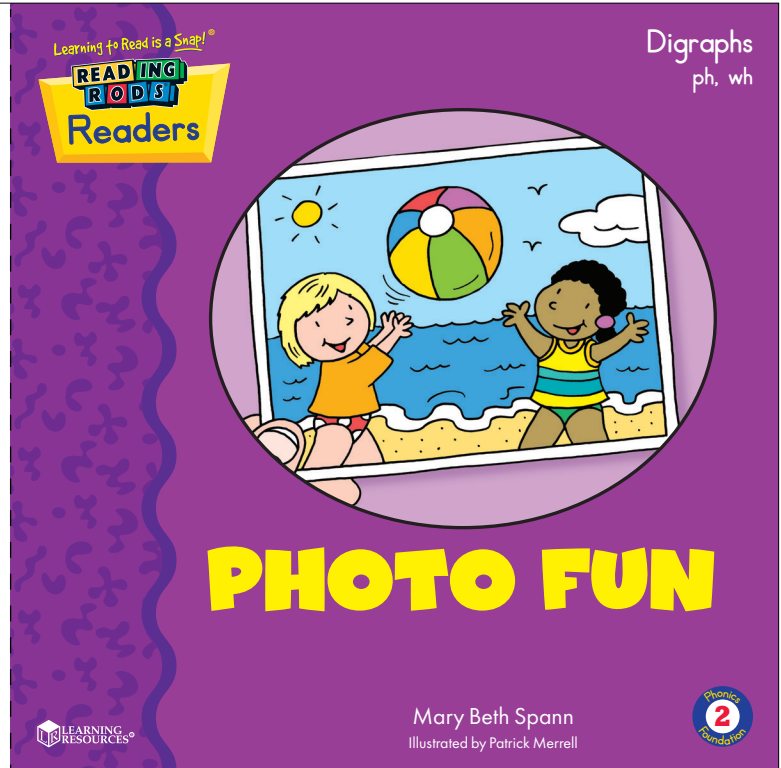
TRIM AROUND BOOK AND CUT IN HALF. FOLD ON DOTTED LINE. PUT YOUR PAGES TOGETHER IN NUMERICAL ORDER.



Here is my last photo. It is
a photo of a photographer.
The photographer is me!

Cheese!

16



Digraphs
ph, wh

PHOTO FUN

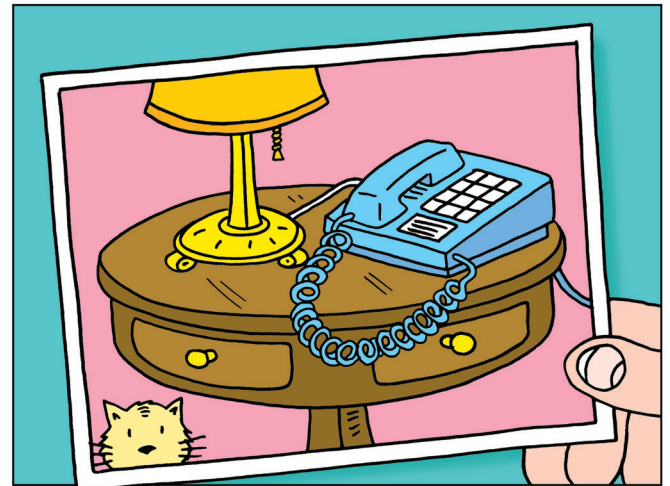
Mary Beth Spann
Illustrated by Patrick Merrell

LEARNING RESOURCES®

Phonics
2
Foundation



I am a photographer. Wherever I go
I take photographs. Here is a photo
I took at the beach.



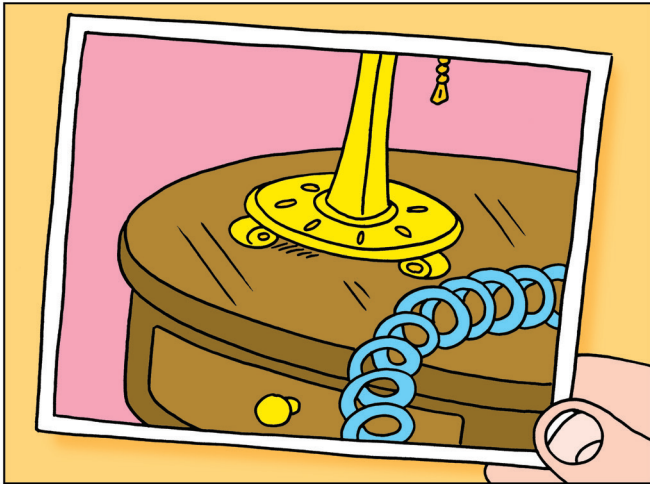
The cord belongs to this phone.
The phone also makes a sound.
The phone goes, "Rrrring!"

2

15

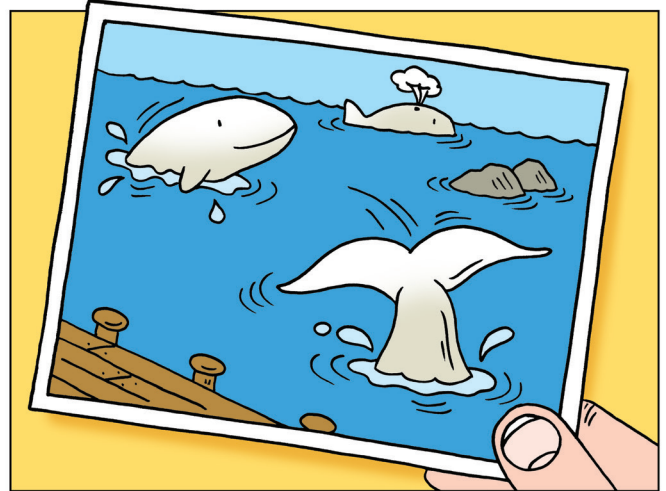
FOLD ON DOTTED LINE

TRIM AROUND BOOK AND CUT IN HALF. FOLD ON DOTTED LINE. PUT YOUR PAGES TOGETHER IN NUMERICAL ORDER.



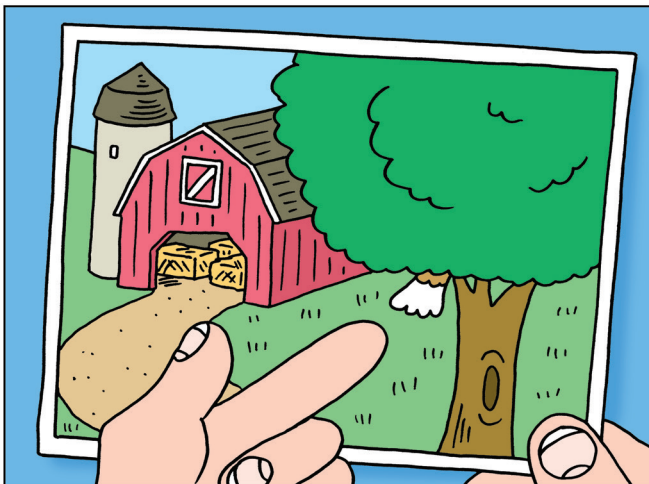
Here is another photo. I took this photo at home. It is a photo of something else on a cord.

14



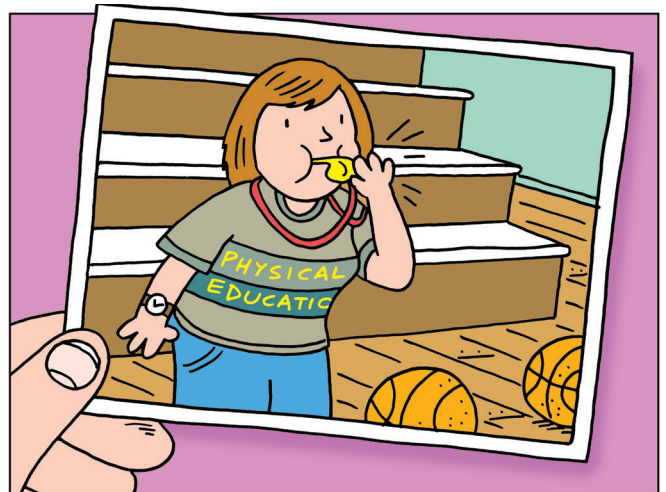
See the white tail? This tail belongs to a whale. The whale is whirling through the water.

3



Here is a photo I took on a farm. It is a photo of a white tail, too. This white tail does not belong to a whale.

4

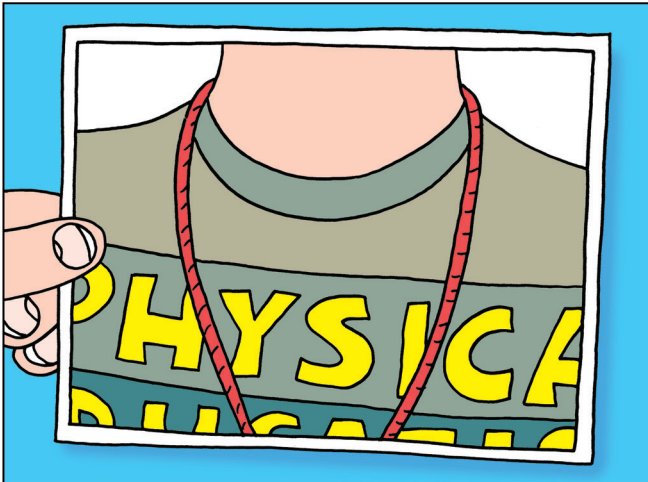


The cord belongs to this whistle. The whistle makes a sound. The whistle goes, "Whheeee!"

13

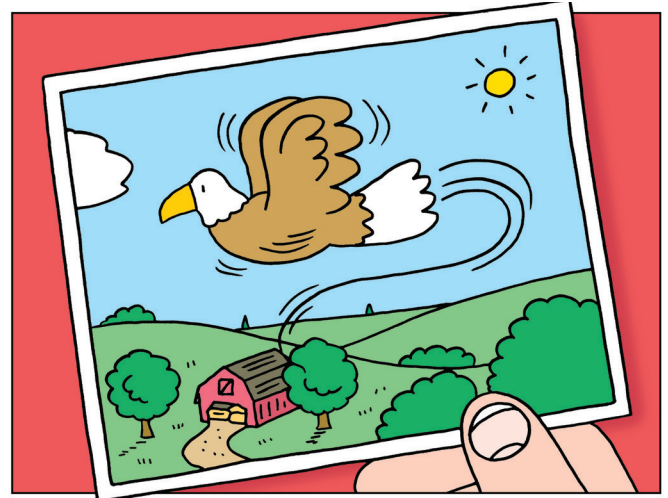
FOLD ON DOTTED LINE

TRIM AROUND BOOK AND CUT IN HALF. FOLD ON DOTTED LINE. PUT YOUR PAGES TOGETHER IN NUMERICAL ORDER.



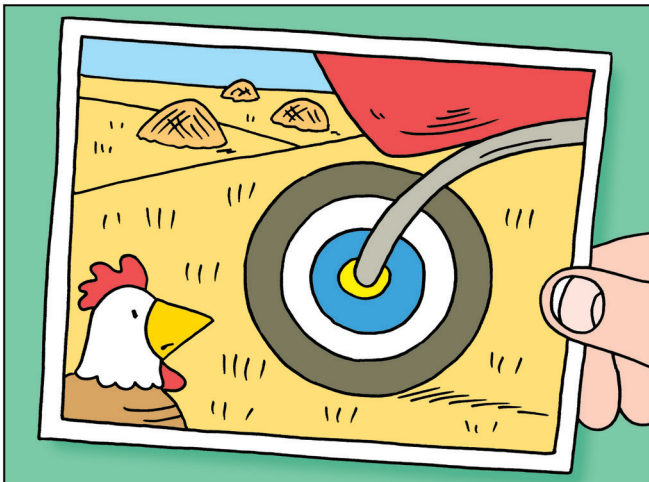
Here is another photo. I took this photo in school, too. It is a photo of something on a cord.

12



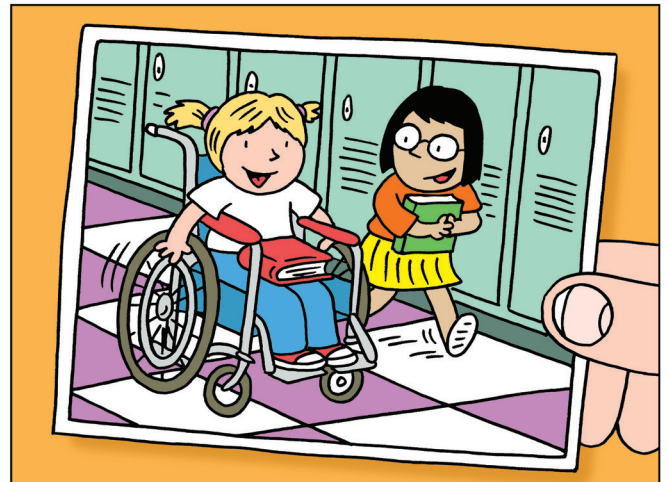
This white tail belongs to an eagle. The eagle whirls in the wind.

5



Here is another photo. I took this photo on the farm, too. It is a photo of a wheel.

6

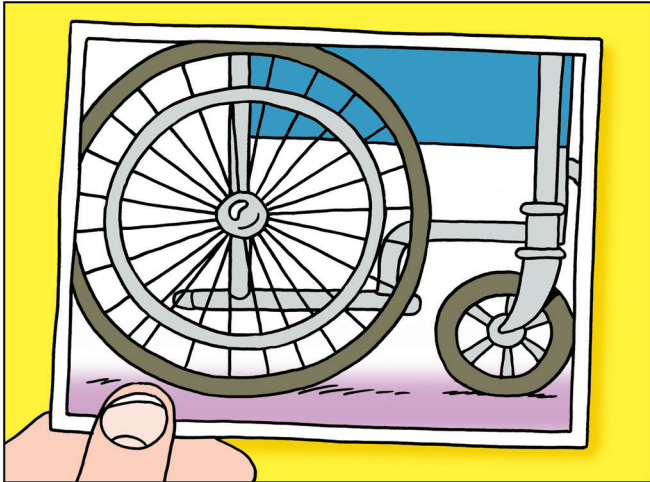


The wheels belong to this wheelchair. My friend is wheeling down the hall.

11

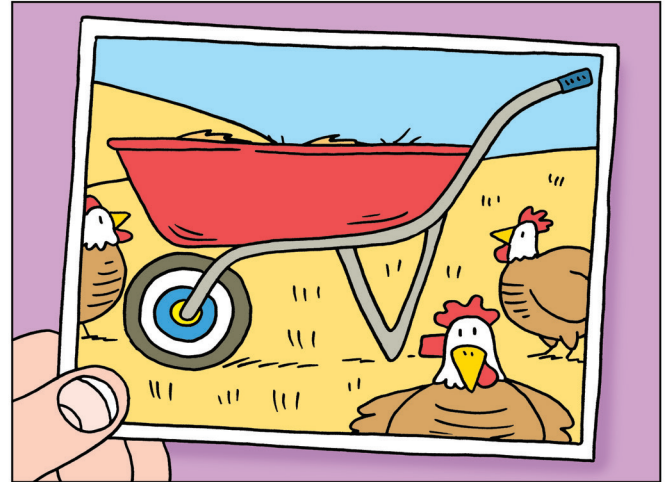
FOLD ON DOTTED LINE

TRIM AROUND BOOK AND CUT IN HALF. FOLD ON DOTTED LINE. PUT YOUR PAGES TOGETHER IN NUMERICAL ORDER.



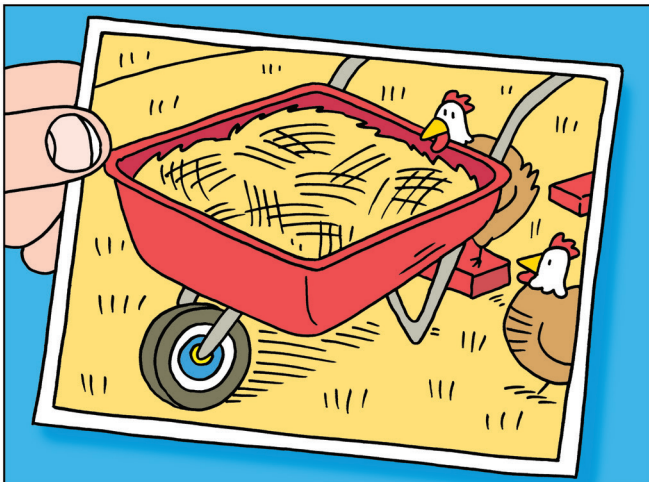
Here is another photo. I took this photo in school. It is a photo of two wheels.

10



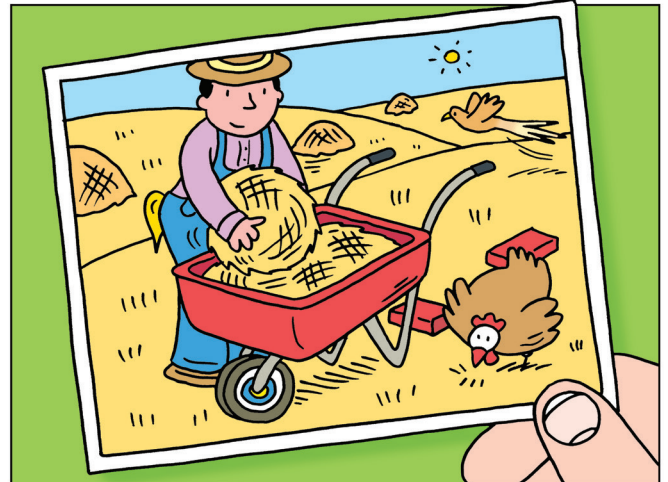
The wheel belongs to this wheelbarrow. The wheelbarrow has just one wheel.

7



Here is another photo. I took this photo on the farm, too. It shows what is inside the wheelbarrow.

8



Wheat is inside the wheelbarrow. The wheat is as golden as the sun.

9

FOLD ON DOTTED LINE