

# Spelling

Champ

4<sup>th</sup>  
Grade

t o o r b

1. rocket \_\_\_\_\_

2. planet \_\_\_\_\_

3. astronaut \_\_\_\_\_

4. gravity \_\_\_\_\_

5. orbit \_\_\_\_\_

6. galaxy \_\_\_\_\_

7. universe \_\_\_\_\_

8. satellite \_\_\_\_\_

9. lunar \_\_\_\_\_

10. alien \_\_\_\_\_

k

n

s a m g o u

# Table of Contents

---

## Spelling Champ

Spell It! Grade 4 #1 \*

Spell It! Grade 4 #2 \*

4th Grade Spelling Test: Space Exploration

4th Grade Spelling Test: At the Movies

4th Grade Spelling Test: Technology Vocabulary

4th Grade Spelling Test: State Capitals

4th Grade Spelling Test: State Names

4th Grade Spelling Test: Making Music

4th Grade Spelling Test: Going Green

4th Grade Spelling Test: Careers

4th Grade Spelling Test: Touchdown!

4th Grade Spelling Test: Hail to the Chief

Syllables \*

Syllables with the "Magic E" \*

Word Smash

*Certificate of Completion*

*Answer Sheets*

*\* Has an Answer Sheet*

Want more workbooks? Join Education.com Plus to save time and money.  
<http://www.education.com/education-plus/>



1

1. breakfast \_\_\_\_\_

6. vegetable \_\_\_\_\_

2. justice \_\_\_\_\_

7. solution \_\_\_\_\_

3. contact \_\_\_\_\_

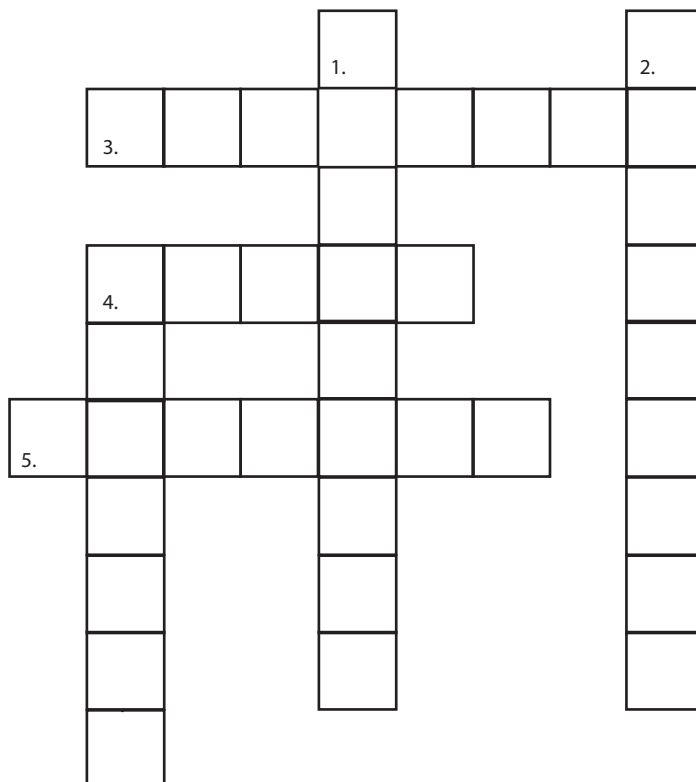
8. conflict \_\_\_\_\_

4. another \_\_\_\_\_

9. agree \_\_\_\_\_

5. together \_\_\_\_\_

10. example \_\_\_\_\_



Use words from the vocabulary list to solve the crossword puzzle.

#### DOWN

- 1. a plant used as food
- 2. the first meal of the day
- 4. one more

#### ACROSS

- 3. side by side
- 4. of the same mind
- 5. to get in touch with



2

1. disappear \_\_\_\_\_

6. clothing \_\_\_\_\_

2. gasoline \_\_\_\_\_

7. damage \_\_\_\_\_

3. movement \_\_\_\_\_

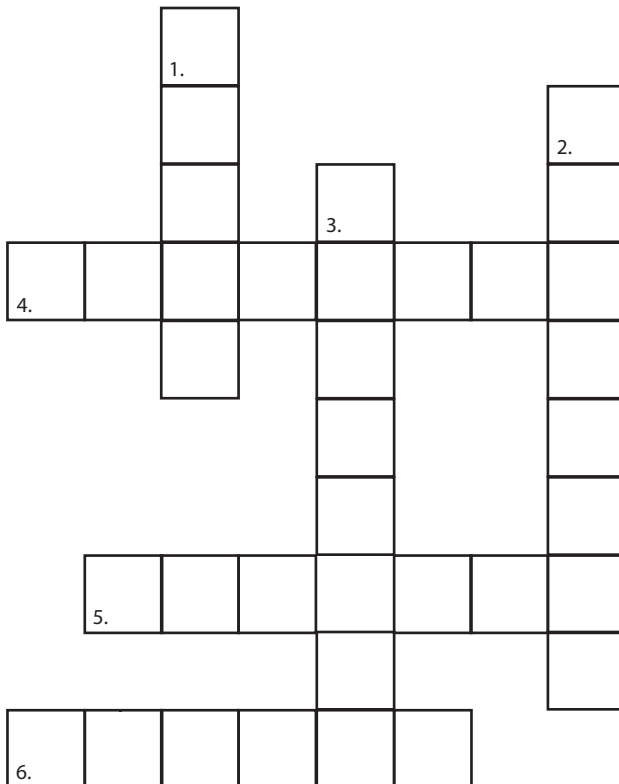
8. wrist \_\_\_\_\_

4. whenever \_\_\_\_\_

9. yourself \_\_\_\_\_

5. beautiful \_\_\_\_\_

10. believe \_\_\_\_\_



Use words from the vocabulary list to solve the crossword puzzle.

DOWN

1. a joint connecting the hand to the arm

2. at any time

3. what people wear

ACROSS

4. fuel for cars

5. to think something is true

6. to cause harm

## 4th Grade Spelling Test #1

### SPACE EXPLORATION



1. rocket \_\_\_\_\_

6. galaxy \_\_\_\_\_

2. planet \_\_\_\_\_

7. universe \_\_\_\_\_

3. astronaut \_\_\_\_\_

8. satellite \_\_\_\_\_

4. gravity \_\_\_\_\_

9. lunar \_\_\_\_\_

5. orbit \_\_\_\_\_

10. alien \_\_\_\_\_

### SPACE STORIES

What do you think space is like?

Write a paragraph using at least three of your spelling words on the lines below.

-----

-----

-----

-----

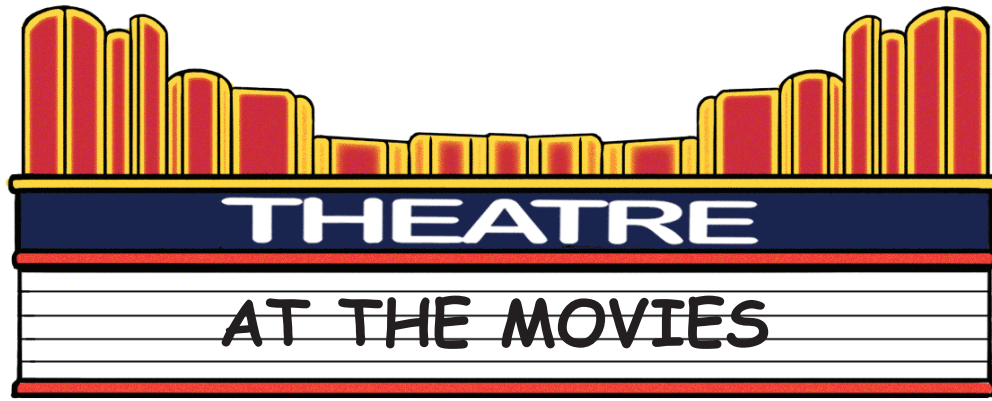
-----

-----

-----

-----

## 4th Grade Spelling Test #2



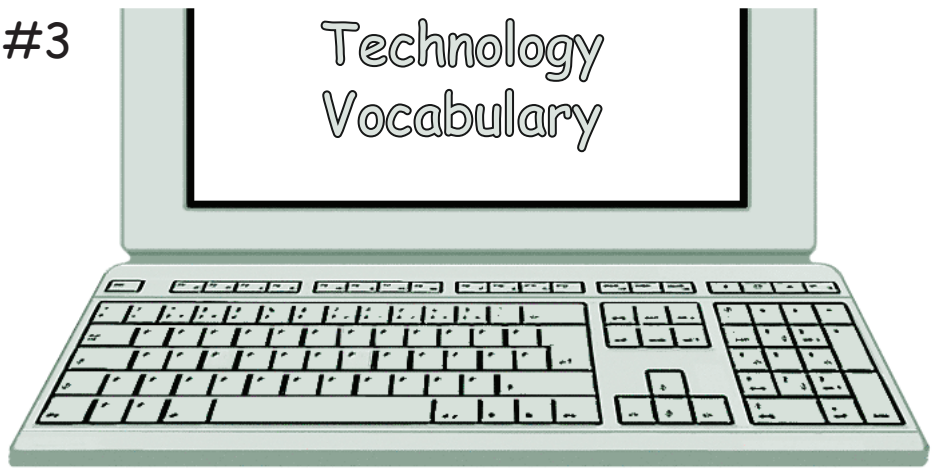
- |                   |                          |
|-------------------|--------------------------|
| 1. cinema _____   | 6. theater/theatre _____ |
| 2. director _____ | 7. comedy _____          |
| 3. actress _____  | 8. studio _____          |
| 4. premiere _____ | 9. release _____         |
| 5. review _____   | 10. camera _____         |

### WRITE A SCRIPT

Complete the voice-over for this movie trailer.

"In a world where she can't seem to find love, the most famous \_\_\_\_\_ of our time, Julie Hobarts, stars in a new romantic \_\_\_\_\_ about finding happiness where you least expect it. See *The Most Important Thing*, in \_\_\_\_\_s this spring."

Answers: actress, comedy, theater/theatre



Rewrite these spelling words.

- |                    |                      |
|--------------------|----------------------|
| 1. computer _____  | 6. software _____    |
| 2. monitor _____   | 7. information _____ |
| 3. processor _____ | 8. digital _____     |
| 4. data _____      | 9. download _____    |
| 5. website _____   | 10. laboratory _____ |

## PRESS RELEASE

A major technology company, Manzana, is coming out with a new product that millions of people have been waiting for. Complete the clipping from the company's press release below.

"Our new c \_ \_ mp \_ \_ \_ \_ \_ will be able to d \_ \_ \_ \_ \_ d  
i \_ \_ \_ \_ m \_ \_ \_ \_ n faster than ever before, thanks to  
Manzana's newest p \_ \_ \_ \_ s \_ \_ \_ r, developed in our exclusive  
l \_ \_ \_ \_ a \_ \_ \_ \_ y in Cupertino, CA."

Answers: computers, download, information, processor, laboratory



- |                       |                  |
|-----------------------|------------------|
| 1. Baton Rouge _____  | 6. Denver _____  |
| 2. Indianapolis _____ | 7. Boise _____   |
| 3. Columbus _____     | 8. Austin _____  |
| 4. Montgomery _____   | 9. Boston _____  |
| 5. Helena _____       | 10. Albany _____ |

## Name the Capital

Write the name of the capital inside the outline of each state.



Answers: 1. Baton Rouge 2. Austin 3. Boise



- |                      |                     |
|----------------------|---------------------|
| 1. California _____  | 6. Louisiana _____  |
| 2. Wyoming _____     | 7. Arkansas _____   |
| 3. Hawaii _____      | 8. Illinois _____   |
| 4. Montana _____     | 9. Nebraska _____   |
| 5. Mississippi _____ | 10. Tennessee _____ |

## DEAD LETTER OFFICE

Write the name of the state these letters are going to.

1.   
Kristi B.  
244 Beachfront Dr.  
Honolulu, \_\_\_\_\_  
96801
2.   
Candice A.  
1434 Royale Ave.  
New Orleans, \_\_\_\_\_  
70112
3.   
Jody A.  
160 Goldmine Place  
San Francisco, \_\_\_\_\_  
94132

Answers: 1. Hawaii 2. Louisiana 3. California



Rewrite these spelling words.

- |                    |                      |
|--------------------|----------------------|
| 1. rhythm _____    | 6. classical _____   |
| 2. orchestra _____ | 7. composition _____ |
| 3. melody _____    | 8. lyrics _____      |
| 4. harmony _____   | 9. performance _____ |
| 5. acoustic _____  | 10. audience _____   |

Your school's music program is having a concert. Write a program for the show.

## Music Program

6:30-7:15: \_\_\_\_\_ guitar  
class plays "A Tribute to Bob Dylan"

7:30-8:15: The wind ensemble  
performs \_\_\_\_\_ music  
by Beethoven and Bach

8:30-9:00: Hear our talented  
student Jimmy Reed play an  
original \_\_\_\_\_ for the  
piano

## 4th Grade Spelling Test #7

# Going Green



Rewrite these spelling words.

- |                       |                        |
|-----------------------|------------------------|
| 1. conservation _____ | 6. recycling _____     |
| 2. ecological _____   | 7. biodegradable _____ |
| 3. resources _____    | 8. reduce _____        |
| 4. environment _____  | 9. emissions _____     |
| 5. reusable _____     | 10. natural _____      |

Use your spelling words to complete these tips on staying green.

1. Use \_\_\_\_\_ bags and containers whenever possible.
2. \_\_\_\_\_ your family's carbon \_\_\_\_\_  
by unplugging appliances when no one is using them.
3. Put plastic packaging marked 1-7 in the \_\_\_\_\_  
instead of the trash.

Answers: 1. reusable/ biodegradable 2. reduce/ emissions 3. recycling

- |                     |                     |
|---------------------|---------------------|
| 1. lawyer _____     | 6. thespian _____   |
| 2. physician _____  | 7. politician _____ |
| 3. journalist _____ | 8. designer _____   |
| 4. architect _____  | 9. scientist _____  |
| 5. athlete _____    | 10. zoologist _____ |

## GUESS WHO

Guess who is saying each sentence. Write your answer in the opposite word bubble.

1. "I help people when they are sick. Who am I?"



" \_\_\_\_\_!"

2. "I design buildings. Who am I?"



" \_\_\_\_\_!"

3. "I am an actor who performs in plays. Who am I?"

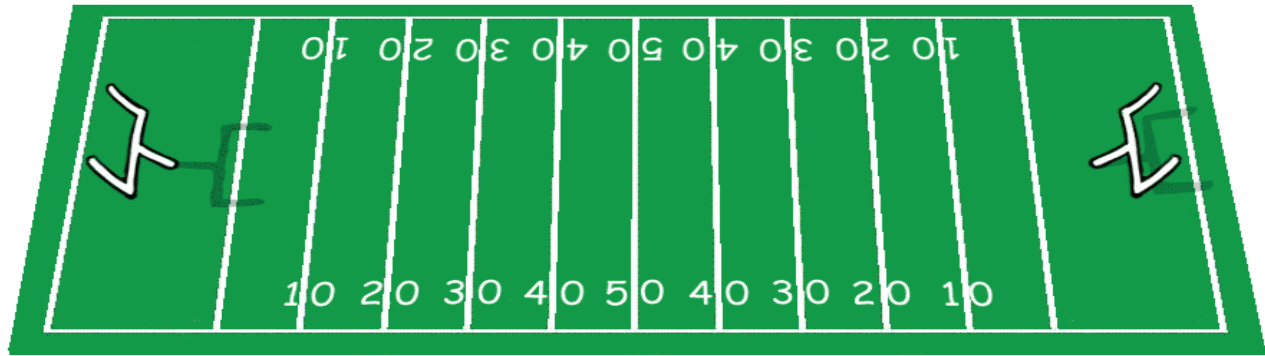


" \_\_\_\_\_!"

4. "I study animals. Who am I?"



" \_\_\_\_\_!"



1. goalpost \_\_\_\_\_
2. stadium \_\_\_\_\_
3. training \_\_\_\_\_
4. playoffs \_\_\_\_\_
5. penalty \_\_\_\_\_
6. tailgating \_\_\_\_\_
7. refreshments \_\_\_\_\_
8. souvenir \_\_\_\_\_
9. referee \_\_\_\_\_
10. touchdown \_\_\_\_\_

What are your top three favorite things to do at a football game?  
Using at least three of your spelling words, write your answer on the spaces below.

1. \_\_\_\_\_  
\_\_\_\_\_
2. \_\_\_\_\_  
\_\_\_\_\_
3. \_\_\_\_\_  
\_\_\_\_\_

## 4th Grade Spelling Test #10

### Hail to the Chief



1. constitution \_\_\_\_\_

6. primary \_\_\_\_\_

2. presidential \_\_\_\_\_

7. election \_\_\_\_\_

3. candidate \_\_\_\_\_

8. inaugural \_\_\_\_\_

4. politics \_\_\_\_\_

9. capital \_\_\_\_\_

5. caucus \_\_\_\_\_

10. legislation \_\_\_\_\_

### WORD SCRAMBLE

Unscramble the letters to form words that complete the sentences.

1. When a person decides to run for office, he then becomes

a \_\_\_\_\_. **DANIDCEAT**

2. An \_\_\_\_\_ is held every four years to pick a new government for our country. **ENCTLEIO**

2. After a new president takes the oath of office, he holds an \_\_\_\_\_ ball to celebrate! **AULGNUIRA**

Answers: 1. candidate 2. election 3. inaugural

Name: \_\_\_\_\_

Date: \_\_\_\_\_

# Syllables

manufacture

peculiar

quiet

circular

information

destructive

communicate

teacher

elevator

friendship

competition

demonstrate

accurate

science

water

Read the words above to determine the number of syllables. Write the words in the correct column in alphabetical order.

Two syllables

---

---

---

---

---

Three syllables

---

---

---

---

---

Four syllables

---

---

---

---

---

Name: \_\_\_\_\_

Date: \_\_\_\_\_

# Syllables with the "magic e"

Can you separate the following words with the VCE pattern? V stands for vowel (a, e, i, o, u). C stands for consonant (not vowels). E stands for the "silent e" or the "magic e."

Example: collide col / lide

The "silent e" or the "magic e" makes the previous vowel long. What would it sound like without the "magic e?"

Separate the following words into syllables:

1. inmate \_\_\_\_\_ / \_\_\_\_\_

2. recognize \_\_\_\_\_ / \_\_\_\_\_ / \_\_\_\_\_

3. reptile \_\_\_\_\_ / \_\_\_\_\_

4. survive \_\_\_\_\_ / \_\_\_\_\_

5. inspire \_\_\_\_\_ / \_\_\_\_\_

6. concentrate \_\_\_\_\_ / \_\_\_\_\_ / \_\_\_\_\_

7. disclose \_\_\_\_\_ / \_\_\_\_\_

8. escape \_\_\_\_\_ / \_\_\_\_\_

9. conclude \_\_\_\_\_ / \_\_\_\_\_

10. complete \_\_\_\_\_ / \_\_\_\_\_

Add the "silent e" to the end of these words. Do they sound different? What does the "silent e" do to the letter g? Practice saying them both out loud.

cub cube

1. mad \_\_\_\_\_

2. bit \_\_\_\_\_

3. rag \_\_\_\_\_

4. hug \_\_\_\_\_

5. hid \_\_\_\_\_

6. quit \_\_\_\_\_

7. spin \_\_\_\_\_

8. rid \_\_\_\_\_

9. rod \_\_\_\_\_

10. bath \_\_\_\_\_



# Word Smash

4<sup>TH</sup> GRADE  
WRITING

Step right up! Test your word knowledge strength! Use these word roots, prefixes, and suffixes to construct as many words as you can. There are **over 20 possible combinations**. How many can you find? Color in the strength meter on the left after creating each word. Use a dictionary to make sure your creations are real words!

20

15

10

5

## Prefixes

**in** (not, opposite of)  
**re** (again)  
**de** (opposite)  
**con** (with, together)

## Roots

**cycl** (circle, wheel)  
**serve** (save)  
**surg** (rise)  
**anim** (life, spirit)  
**tract** (to drag, to pull)

## Suffixes

**ate** (cause to be)  
**ed** (past tense)  
**ic** (having characteristics of)  
**ing** (present verb form)

**cycl** recycled, bicycle

**serve** \_\_\_\_\_

**surg** \_\_\_\_\_

**anim** \_\_\_\_\_

**tract** \_\_\_\_\_



# Great job!

---

is an Education.com writing superstar



# Answer Sheets

---

## **Spelling Champ**

Spell It! Grade 4 #1

Spell It! Grade 4 #2

Syllables

Syllables with the "Magic E"

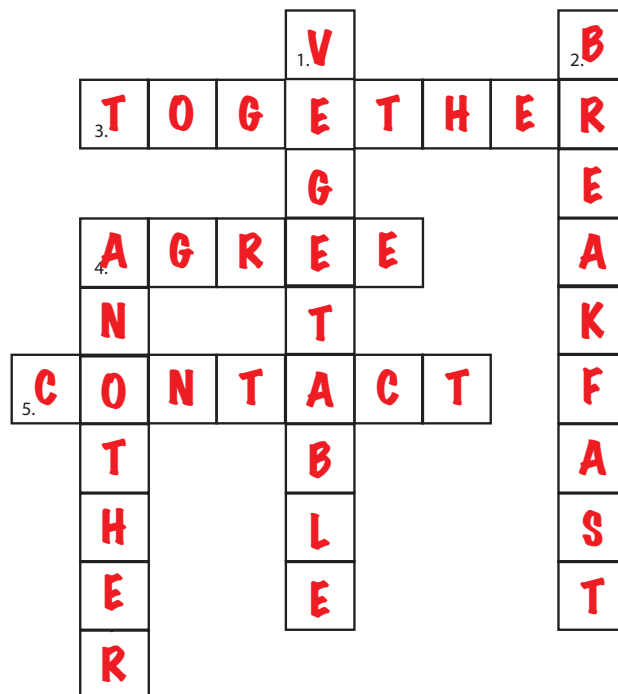
Want more workbooks? Join Education.com Plus to save time and money.  
<http://www.education.com/education-plus/>

# Answer Sheet



1

1. breakfast \_\_\_\_\_
2. justice \_\_\_\_\_
3. contact \_\_\_\_\_
4. another \_\_\_\_\_
5. together \_\_\_\_\_
6. vegetable \_\_\_\_\_
7. solution \_\_\_\_\_
8. conflict \_\_\_\_\_
9. agree \_\_\_\_\_
10. example \_\_\_\_\_



Use words from the vocabulary list to solve the crossword puzzle.

## DOWN

1. a plant used as food
2. the first meal of the day
4. one more

## ACROSS

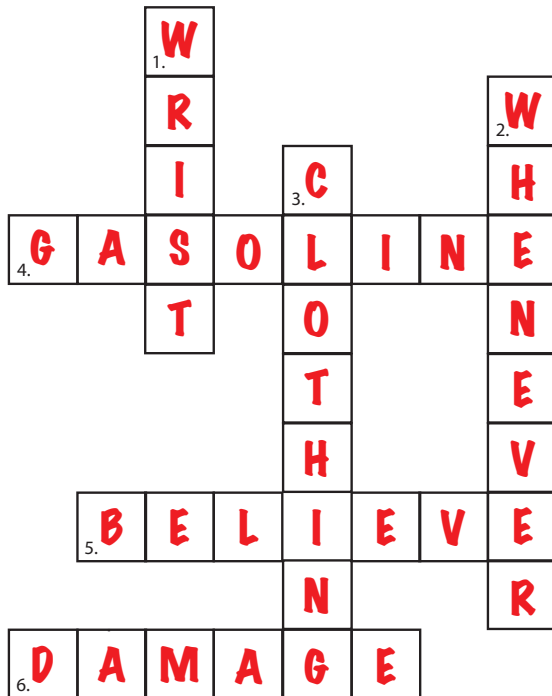
3. side by side
4. of the same mind
5. to get in touch with

# Answer Sheet



2

1. disappear \_\_\_\_\_
2. gasoline \_\_\_\_\_
3. movement \_\_\_\_\_
4. whenever \_\_\_\_\_
5. beautiful \_\_\_\_\_
6. clothing \_\_\_\_\_
7. damage \_\_\_\_\_
8. wrist \_\_\_\_\_
9. yourself \_\_\_\_\_
10. believe \_\_\_\_\_



Use words from the vocabulary list to solve the crossword puzzle.

## DOWN

1. a joint connecting the hand to the arm
2. at any time
3. what people wear

## ACROSS

4. fuel for cars
5. to think something is true
6. to cause harm

# Answer Sheet

Name: \_\_\_\_\_

Date: \_\_\_\_\_

## Syllables

### ANSWER KEY

manufacture

peculiar

quiet

circular

information

destructive

communicate

teacher

elevator

friendship

competition

demonstrate

accurate

science

water

Read the words above to determine the number of syllables. Write the words in the correct column in alphabetical order.

### Two syllables

friendship

quiet

science

teacher

water

### Three syllables

accurate

circular

demonstrate

destructive

peculiar

### Four syllables

communicate

competition

elevator

information

manufacture

# Answer Sheet

Name: \_\_\_\_\_

Date: \_\_\_\_\_

## Syllables with the "magic e"

### ANSWER KEY

Can you separate the following words with the VCE pattern? V stands for vowel (a, e, i, o, u). C stands for consonant (not vowels). E stands for the "silent e" or the "magic e."

Example: collide col / lide

The "silent e" or the "magic e" makes the previous vowel long. What would it sound like without the "magic e?"

Separate the following words into syllables:

1. inmate in / mate

2. recognize re / cog / nize

3. reptile rep / tile

4. survive sur / vive

5. inspire in / spire

6. concentrate con / cen / trate

7. disclose dis / close

8. escape es / cape

9. conclude con / clude

10. complete com / plete

Add the "silent e" to the end of these words. Do they sound different? What does the "silent e" do to the letter g? Practice saying them both out loud.

cub cube

1. mad made

2. bit bite

3. rag rage

4. hug huge

5. hid hide

6. quit quite

7. spin spine

8. rid ride

9. rod rode

10. bath bathe