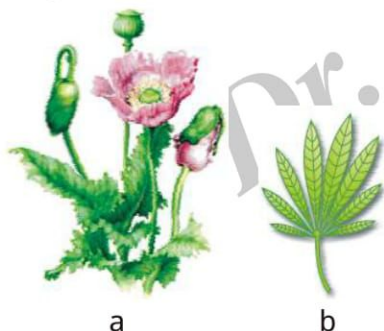


- Treatment of snake bite by antivenine is providing
 - Artificial acquired active immunity
 - Artificial acquired passive immunity
 - Natural acquired passive immunity
 - Specific natural immunity.
- Among the common cold (flu), mumps, small pox, herpes, influenza and AIDS, how many diseases are caused by viruses in humans
 - 3
 - 4
 - 5
 - 6.
- For the prevention and control of malaria, the most important measure is
 - Doors and window should be provided with wire mesh
 - Spraying of insecticides in ditches, drainage areas and swamps
 - Control or eliminate the vectors and their breeding places
 - Introducing *Gambusia* fish in ponds.
- Peyer's patches are found in
 - Small intestine
 - Large intestine
 - Stomach
 - Vermiform appendix.
- Recognise the figure and find out the correct matching



- 'a' produces depressant while 'b' influences cardiovascular system
- Receptors of 'a' are present in CNS and GIT while for 'b' are present principally in brain.
- 'a' produces smack while 'b' produces charas
- All of the above.

- Vegetative reproduction in mosses is by fragmentation and budding in the
 - 1^o protonema
 - Leafy stage
 - 2^o protonema
 - Both A and C.
- Which of the following drugs are normally used as medicines to help patients cope with mental illnesses like depression and insomnia.
 - Barbitates
 - Amphetamines
 - Benzodiazepins
 - LSD
 - a, b, c and d
 - b, c and d
 - a, c and d
 - a, b and c.
- Read the following statements
 - In 1997, An American company got patent rights on Basmati rice through the International Patent and Trademark office
 - There are an estimated 50,000 varieties of rice in India alone
 - First clinical gene therapy was given in 1990 to a 4-year old girl with adenosine diaminase deficiency
 - In 1983, Eli Lilly company prepared DNA sequences corresponding to A, B and C chains of human insulin.

In these how many are incorrect statements

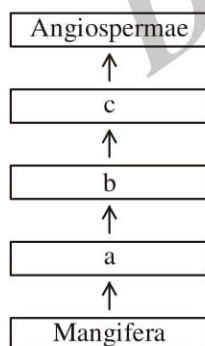
- 4
 - 3
 - 2
 - 1.
- Match the columns I, II and III and choose the correct combination from the options given

| Column I | Column II | Column III |
|-----------------------|------------------------|-----------------|
| a. <i>Wuchereria</i> | 1. Liver fluke | Q. Monoecious |
| b. <i>Hirudinaria</i> | 2. Filaria worm | R. Metamerism |
| c. <i>Ancylostoma</i> | 3. Blood sucking leech | S. Endoparasite |
| d. <i>Fasciola</i> | 4. Hookworm | T. Dioecious |

 - a-2-S, b-3-Q, c-4-T, d-1-S
 - a-4-T, b-3-R, c-2-S, d-1-Q
 - a-2-T, b-3-R, c-4-S, d-1-R
 - a-2-Q, b-3-T, c-4-R, d-1-S.
 - Genomic DNA library is
 - Packing of donor DNA in a collection of

vectors

- (B) A collection of gene vectors
(C) Collection of organisms for extracting DNA
(D) A collection of literature about DNA.
11. Petromyzon is not a true fish because of
(A) Presence of gills
(B) Absence of operculum
(C) Absence of median fins
(D) Absence of paired fins and true jaws.
12. Arrangement of ovules on the placenta developed from central axis of ovary is
(A) Parietal placentation
(B) Basal placentation
(C) Marginal placentation
(D) Axile placentation.
13. Dysentery is caused by
(A) *Entamoeba histolytica*
(B) *Entamoeba coli*
(C) *Escherichia coli*
(D) Bacteria.
14. Concept of crop-cafeteria and crop-scheduling was given by
(A) M.S. Swaminathan
(B) Norman Borlaug
(C) Both A and B
(D) P. Maheshwari.
15. Recognise the following flow diagram and the find correct option according to taxonomic hierarchy



- (A) 'a' is comparable to muscidae while 'b' is at the same level as that of primata
(B) 'c' includes all the angiosperms having two cotyledons in their seeds

- (C) For wheat 'a' is poaceae, 'b' is poales and 'c' is monocotyledonae
(D) All of the above are correct statements.
16. AIDS related complex or ARC is
(A) Initial form of AIDS
(B) Not linked to AIDS
(C) Severe form of AIDS
(D) None of the above.
17. In dicot root showing secondary growth, cork is found
(A) External to primary cortex
(B) Inner to endodermis and outer to pericycle
(C) Outer to endodermis and inner to primary cortex
(D) Inner to endodermis and external to primary phloem.
18. Sexual stage of Plasmodium occurs in
(A) Salivary glands of mosquito
(B) Human RBC
(C) Intestine of mosquito
(D) Human liver.
19. At new place you suddenly starts sneezing and wheezing. The statement correctly correlate this condition
(i) This is exaggerated response of the immune system
(ii) Symptoms are watery eyes and running nose
(iii) Due to the release of chemicals like adrenaline, steroids and histamine
(iv) Antibodies produced to these are IgE type
(v) Rheumatoid arthritis is an example
(A) i, ii, iii, iv are true
(B) i, ii, iv are true
(C) i, iii, iv are true
(D) All are correct except v.
20. The epithelial tissues are of
(A) Three types namely, squamous, cuboidal and columnar epithelium
(B) Four types, namely, squamous cuboidal, columnar and ciliated epithelium
(C) Two types, as, simple and compound epithelium

(D) Two types, as, simple and complex epithelium.

21. When the functioning of one or more organs or systems of the body is adversely affected, characterised by various signs and symptoms, this is called

- (A) Allergy (B) Toxicity
(C) Immunity (D) Disease.

22. Match the columns I and II, and choose the correct combination from the options given

Column I

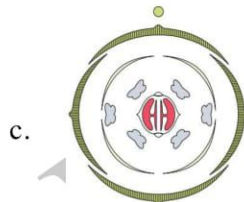
Column II



1. Brassicaceae



2. Fabaceae



3. Solananceae



4. Liliaceae

- (A) a-2, b-4, c-1, d-3 (B) a-3, b-2, c-1, d-4
(C) a-1, b-3, c-4, d-2 (D) a-2, b-4, c-3, d-1.

23. The overall ability of the host to fight the disease causing organisms, conferred by the immune system is called

- (A) Allergy
(B) Auto-immunity
(C) Immunity
(D) Both B and C.

24. Detailed structure of the membrane was studied after the advent of electron microscope is

- (A) 1930s (B) 1950s
(C) 1970s (D) 1990s.

25. A wide range of organisms belonging to bacteria, viruses, fungi, protozoans, helminths, etc., could cause diseases in men. Such disease causing organisms are called

- (A) Allergens (B) Carcinogens
(C) Parasites (D) Pathogens.

26. Antigen binding site is present on which terminal of peptide chain in antibodies

- (A) N-terminal
(B) C-terminal
(C) Either N or C-terminal
(D) In between N and C-terminal.

27. Peptide bond is formed when the

- (A) Carboxyl group of one amino acid reacts with the carboxy, group of the next amino acid
(B) Amino group of one amino acid reacts with the amino group of the next amino acid
(C) Carboxyl group of one amino acid reacts with amino group of the next amino acid
(D) Amino group of one amino acid reacts with carboxyl group of the next amino acid.

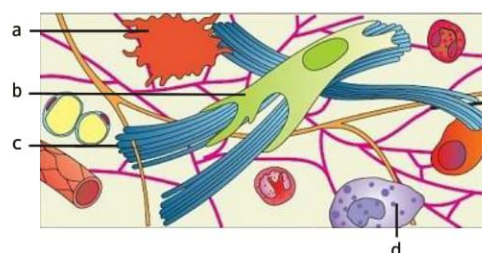
28. Dengue fever is transmitted by which

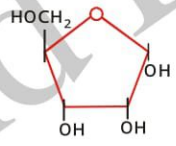
- (A) *Anopheles* mosquito
(B) *Culex* mosquito
(C) *Aedes* mosquito
(D) Tik-Tik fly.

29. An antiviral substance produced in response to viral infection for restricting its multiplication is

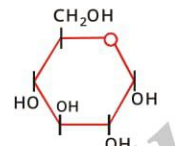
- (A) Antigen
(B) Antivirion
(C) Interferon
(D) Virion.

30. Recognise the figure and find out the correct matching




- (A) a-Mast cells, d-Macrophages, b-Fibroblast, c-Collogan fibres
(B) d-Mast cells, a-Macrophages, c-Fibroblast, b-Collogan fibres
(C) d-Mast cells, a-Macrophages, b-Fibroblast, c-Collogan fibres
(D) b-Mast cells, d-Macrophages, a-Fibroblast, c-Collogan fibres.
31. What is the requirement of equational division in meiosis
(A) Formation of four gametes
(B) Segregation of replicated chromosomes
(C) Equal distribution of haploid chromosomes
(D) Equal distribution of genes on chromosomes.
32. Tumor cells have been shown to avoid detection and destruction by immune system. Therefore the patient are given certain substances called biological response modifiers (BRM) which activates their immune system and helps in destroying the tumor. Identify the BRM.
(A) Alpha interferon
(B) Alpha lactalbumin
(C) Alpha-1 antitrypsin
(D) Gamma globulin.
33. Match the columns I and II, and choose the correct combination from the options given
- | Column I | Column II |
|-----------------------|--|
| a. Natural active | p. Immunity devise open by heredity |
| b. Artificial passive | q. From mother foetus through placenta |
| c. Artificial active | r. Injection of antiserum |
| d. Natural passive | s. Fighting infection naturally |
| | t. Induced vaccination |
- (A) a - s, b - r, c - t, d - q
(B) a - p, b - q, c - r, d - t
(C) a - s, b - t, c - q, d - r
(D) a - t, b - s, c - r, d - p.
34. Which one of the following is cause of the "Oriental Sore"
(A) *Trypanosoma gambiense*
(B) *Trypanosoma cruzi*
(C) *Leishmania tropica*
(D) *Leishmania donovani*.
35. Number of mitotic divisions required to produce 128 cells from a single cell
(A) 7 (B) 14
(C) 16 (D) 32.
36. Internal bleeding, muscular pain, blockage of the intestinal passage and anaemia are some of the symptoms caused due to infection by
(A) *Wuchereria* (B) *Trichophyton*
(C) *Ascaris* (D) *Plasmodium*.
37. Recognise the figure and find out the correct matching
- 

a



b



c
- (A) a-glucose, b-fructose, c-lecithin
(B) a-fructose, b-glucose, c-glycerol
(C) a-ribose, b-cholesterol, c-glucose
(D) a-ribose, b-glucose, c-cholesterol.
38. Which is common between AIDS & Hepatitis-B
(i) Both are viral diseases
(ii) Both are transmitted by infected needles and syringes
(iii) Both are infectious diseases
(iv) Both are chronic diseases
(v) Both are ultimately fatal.
(A) ii, iii, iv and v
(B) i, ii, iii, iv and v
(C) i, ii, iii, and v
(D) ii, iii and v.
39. The mature infective stages of malarial parasite which are transferred from mosquito to man are
(A) Sporozoites (B) Merozoites
(C) Trophozoites (D) Gametocytes.
40. Burkitt's lymphoma is caused by
(A) HBV (B) Reovirus
(C) E - B virus (D) HV-8.

Read the assertion and reason carefully to mark the correct option in question.

- (A) If both assertion and reason are true and the reason is the correct explanation of the assertion
- (B) If both assertion and reason are true but reason is not the correct explanation of the assertion
- (C) If assertion is true but reason is false.
- (D) If both assertion and reason are false.

41. Assertion : AIDS is not a congenital disease.

Reason : AIDS is the deficiency of immune system, acquired during the lifetime of an individual.

42. Assertion : More and more children in metro cities of India suffer from allergies and asthma due to sensitivity to the environment.

Reason : The protected environment provided to the childrens in early life in the metro cities.

43. Assertion : MRI generate three dimensional image of the internals of an object

Reason : Antigens against cancer specific antibodies are also used for detection of certain cancers.

44. Assertion : Pneumonia and common cold are air-borne diseases.

Reason : Dengue, malaria, filaria and chikungunya are vector borne disease.

45. Assertion : Cancer causing viruses are called oncogenic viruses have genes called cellular oncogenes

Reason : Proto oncogenes or c-onc have been identified in the cancerous cells.

(NPT) NEET FULL SYLLABUS TEST PATTERN

| Test No. | Date | Full Syllabus Test Pattern |
|-----------------|-------------|----------------------------|
| Major Test - 1 | 04/Feb/2018 | NEET PATTERN |
| Major Test - 2 | 11/Feb/2018 | NEET PATTERN |
| Major Test - 3 | 18/Feb/2018 | NEET PATTERN |
| Major Test - 4 | 25/Feb/2018 | NEET PATTERN |
| Major Test - 5 | 11/Mar/2018 | NEET PATTERN |
| Major Test - 6 | 18/Mar/2018 | NEET PATTERN |
| Major Test - 7 | 25/Mar/2018 | NEET PATTERN |
| Major Test - 8 | 01/Apr/2018 | NEET PATTERN |
| Major Test - 9 | 08/Apr/2018 | NEET PATTERN |
| Major Test - 10 | 15/Apr/2018 | NEET PATTERN |
| Major Test - 11 | 22/Apr/2018 | NEET PATTERN |
| Major Test - 12 | 29/Apr/2018 | NEET PATTERN |

(APT) AIIMS FULL SYLLABUS TEST PATTERN

| Test No. | Date | Full Syllabus Test Pattern |
|-----------------|--------------|----------------------------|
| Major Test - 1 | 21/Feb/2018 | AIIMS PATTERN |
| Major Test - 2 | 08/Mar/2018 | AIIMS PATTERN |
| Major Test - 3 | 22/Mar/2018 | AIIMS PATTERN |
| Major Test - 4 | 05/Apr/2018 | AIIMS PATTERN |
| Major Test - 5 | 12/Apr/2018 | AIIMS PATTERN |
| Major Test - 6 | 19/Apr/2018 | AIIMS PATTERN |
| Major Test - 7 | 26/Apr/2018 | AIIMS PATTERN |
| Major Test - 8 | 07/May/2018 | AIIMS PATTERN |
| Major Test - 9 | 14/May/2018 | AIIMS PATTERN |
| Major Test - 10 | 21/May/2018 | AIIMS PATTERN |
| Major Test - 11 | 28/May/2018 | AIIMS PATTERN |
| Major Test - 12 | 04/June/2018 | AIIMS PATTERN |